

## Product datasheet for **TA500853M**

### TIPRL Mouse Monoclonal Antibody [Clone ID: OTI3D11]

#### Product data:

Product Type:	Primary Antibodies
Clone Name:	OTI3D11
Applications:	FC, WB
Recommended Dilution:	WB 1:2000, Flow 1:100
Reactivity:	Human, Mouse, Rat
Host:	Mouse
Isotype:	IgG1
Clonality:	Monoclonal
Immunogen:	Full length human recombinant protein of human TIPRL (NP_690866) produced in HEK293T cell.
Formulation:	PBS (pH 7.3) containing 1% BSA, 50% glycerol and 0.02% sodium azide.
Concentration:	0.79 mg/ml
Purification:	Purified from mouse ascites fluids or tissue culture supernatant by affinity chromatography (protein A/G)
Conjugation:	Unconjugated
Storage:	Store at -20°C as received.
Stability:	Stable for 12 months from date of receipt.
Predicted Protein Size:	31.4 kDa
Gene Name:	TOR signaling pathway regulator
Database Link:	<a href="#">NP_690866</a> <a href="#">Entrez Gene 261726 Human</a> <a href="#">O75663</a>
Background:	TIPRL is an inhibitory regulator of protein phosphatase-2A , PP4 , and PP6
Synonyms:	TIP; TIP41


[View online »](#)

## Product images:

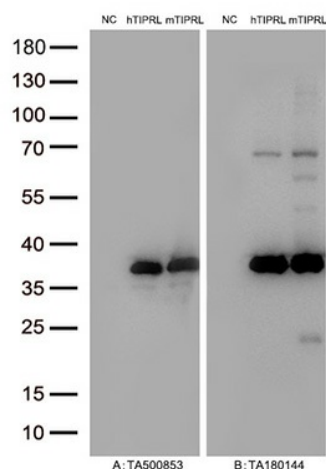
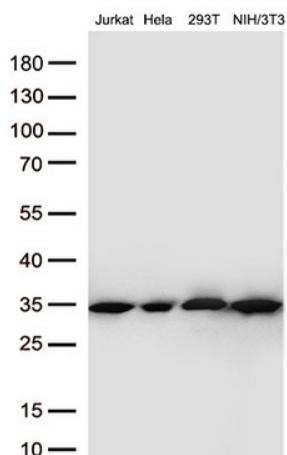
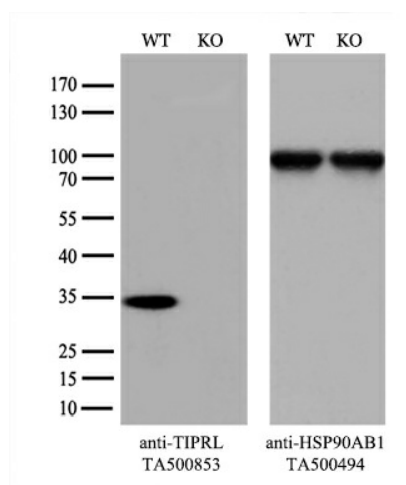


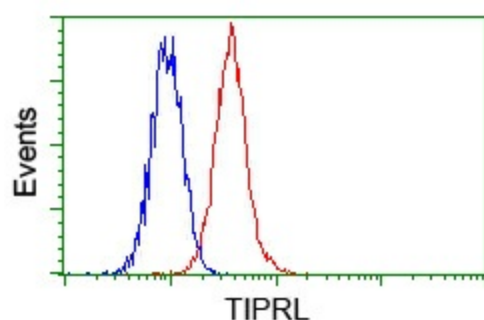
Figure A, Western blot analysis of overexpressed lysates(5ug per lane) from HEK293T cells transfected with empty plasmid ([PS100001], NC) , human TIPRL plasmid ([RC223912], hTIPRL),mouse TIPRL plasmid ([MR203623], mTIPRL) using anti-TIPRL antibody [TA500853] (1:20000@1mg/ml). Figure B, Western blot analysis of the same samples as figure A with anti-DDK antibody ([TA180144], 1:10000@1mg/ml).



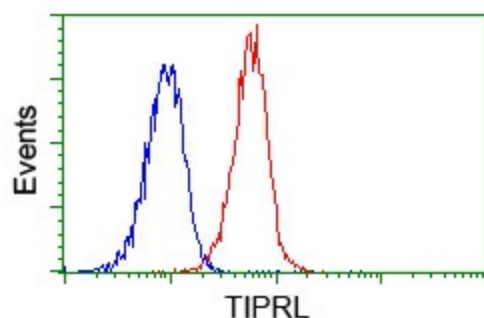
Western blot analysis of extracts (30ug per lane) from 4 different cell lines tissue lysates by using anti-TIPRL antibody([TA500853],1:2000@1mg/ml).



Equivalent amounts of cell lysates (10 ug per lane) of wild-type HEK293T cells (WT, Cat# LC810293T) and TIPRL-Knockout HEK293T cells (KO, Cat# [LC842492]) were separated by SDS-PAGE and immunoblotted with anti-TIPRL monoclonal antibody [TA500853] (1:500). Then the blotted membrane was stripped and reprobed with anti-HSP90 antibody as a loading control.



Flow cytometric analysis of HeLa cells, using anti-TIPRL antibody ([TA500853]), (Red) compared to a nonspecific negative control antibody (TA50011) (Blue).



Flow cytometric analysis of Jurkat cells, using anti-TIPRL antibody ([TA500853]), (Red) compared to a nonspecific negative control antibody (TA50011) (Blue).