

Product datasheet for **TA500853AM**

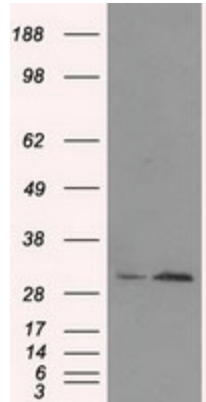
TIPRL Mouse Monoclonal Antibody (Biotin conjugated) [Clone ID: OTI3D11]

Product data:

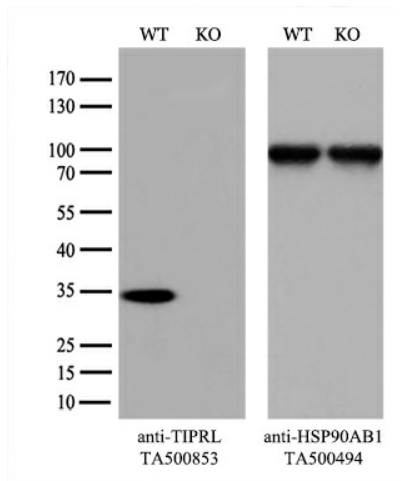
| | |
|-------------------------|---|
| Product Type: | Primary Antibodies |
| Clone Name: | OTI3D11 |
| Applications: | FC, WB |
| Recommended Dilution: | WB 1:2000, Flow 1:100 |
| Reactivity: | Human, Mouse, Rat |
| Host: | Mouse |
| Isotype: | IgG1 |
| Clonality: | Monoclonal |
| Immunogen: | Full length human recombinant protein of human TIPRL (NP_690866) produced in HEK293T cell. |
| Formulation: | PBS (pH 7.3) containing 1% BSA, 50% glycerol and 0.02% sodium azide. |
| Concentration: | 0.5 mg/ml |
| Purification: | Purified from mouse ascites fluids or tissue culture supernatant by affinity chromatography (protein A/G) |
| Conjugation: | Biotin |
| Storage: | Store at -20°C as received. |
| Stability: | Stable for 12 months from date of receipt. |
| Predicted Protein Size: | 31.4 kDa |
| Gene Name: | TOR signaling pathway regulator |
| Database Link: | NP_690866 Entrez Gene 261726 Human O75663 |
| Background: | TIPRL is an inhibitory regulator of protein phosphatase-2A , PP4 , and PP6 |
| Synonyms: | TIP; TIP41 |



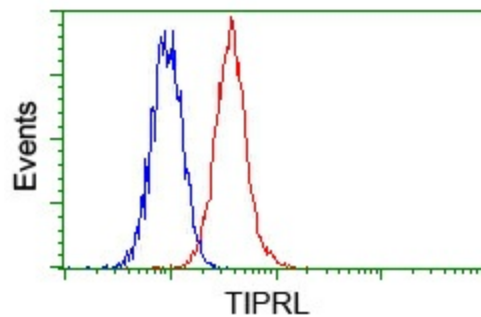
[View online »](#)

Product images:


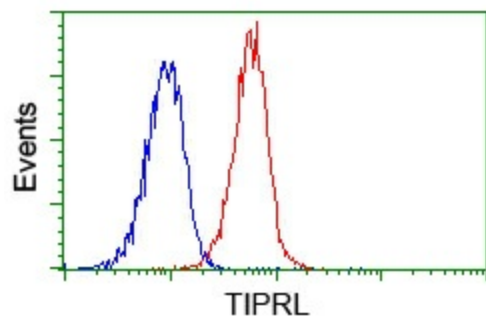
HEK293T cells were transfected with the pCMV6-ENTRY control (Cat# [PS100001], Left lane) or pCMV6-ENTRY TIPRL (Cat# [RC223912], Right lane) cDNA for 48 hrs and lysed. Equivalent amounts of cell lysates (5 ug per lane) were separated by SDS-PAGE and immunoblotted with anti-TIPRL (Cat# [TA500853]). Positive lysates [LY403496] (100ug) and [LC403496] (20ug) can be purchased separately from OriGene.



Equivalent amounts of cell lysates (10 ug per lane) of wild-type HEK293T cells (WT, Cat# LC810293T) and TIPRL-Knockout HEK293T cells (KO, Cat# [LC842492]) were separated by SDS-PAGE and immunoblotted with anti-TIPRL monoclonal antibody [TA500853] (1:500). Then the blotted membrane was stripped and reprobed with anti-HSP90 antibody as a loading control.



Flow cytometric analysis of HeLa cells, using anti-TIPRL antibody ([TA500853]), (Red) compared to a nonspecific negative control antibody (TA50011) (Blue).



Flow cytometric analysis of Jurkat cells, using anti-TIPRL antibody ([TA500853]), (Red) compared to a nonspecific negative control antibody (TA50011) (Blue).