

Product datasheet for **TA500852BM**

B Raf (BRAF) Mouse Monoclonal Antibody (HRP conjugated) [Clone ID: OTI1D4]

Product data:

Product Type:	Primary Antibodies
Clone Name:	OTI1D4
Applications:	FC, IF, IP, WB
Recommended Dilution:	WB 1:2000, IF 1:100, Flow 1:100
Reactivity:	Human, Mouse, Rat
Host:	Mouse
Isotype:	IgG1
Clonality:	Monoclonal
Immunogen:	Full length human recombinant protein of human BRAF (NP_004324) produced in HEK293T cell.
Formulation:	PBS (pH 7.3) containing 1% BSA, 50% glycerol.
Concentration:	0.5 mg/ml
Purification:	Purified from mouse ascites fluids or tissue culture supernatant by affinity chromatography (protein A/G)
Conjugation:	HRP
Storage:	Store at -20°C as received.
Stability:	Stable for 12 months from date of receipt.
Predicted Protein Size:	84.4 kDa
Gene Name:	B-Raf proto-oncogene, serine/threonine kinase
Database Link:	NP_004324 Entrez Gene 109880 MouseEntrez Gene 114486 RatEntrez Gene 673 Human P15056



[View online »](#)

Background:

This gene encodes a protein belonging to the raf/mil family of serine/threonine protein kinases. This protein plays a role in regulating the MAP kinase/ERKs signaling pathway, which affects cell division, differentiation, and secretion. Mutations in this gene are associated with cardiofaciocutaneous syndrome, a disease characterized by heart defects, mental retardation and a distinctive facial appearance. Mutations in this gene have also been associated with various cancers, including non-Hodgkin lymphoma, colorectal cancer, malignant melanoma, thyroid carcinoma, non-small cell lung carcinoma, and adenocarcinoma of lung. A pseudogene, which is located on chromosome X, has been identified for this gene.

Synonyms:

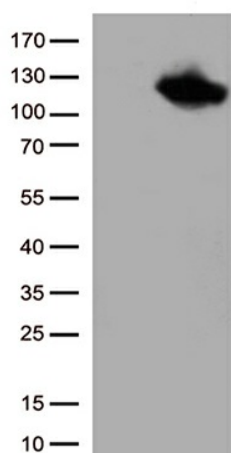
B-raf; B-RAF1; BRAF1; NS7; RAFB1

Protein Families:

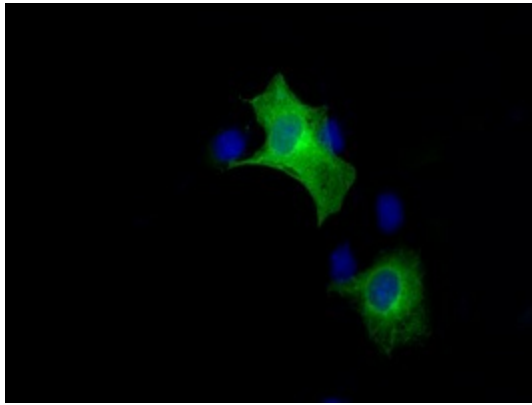
Druggable Genome, Protein Kinase

Protein Pathways:

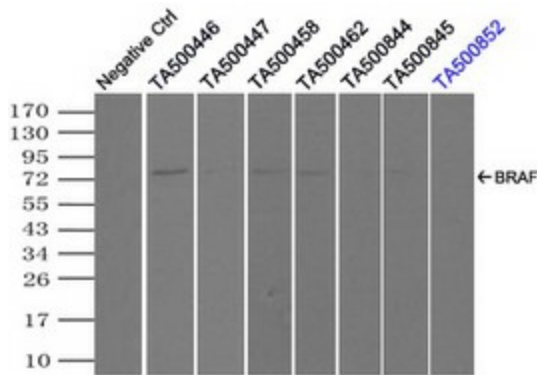
Acute myeloid leukemia, Bladder cancer, Chemokine signaling pathway, Chronic myeloid leukemia, Colorectal cancer, Endometrial cancer, ErbB signaling pathway, Focal adhesion, Glioma, Insulin signaling pathway, Long-term depression, Long-term potentiation, MAPK signaling pathway, Melanoma, mTOR signaling pathway, Natural killer cell mediated cytotoxicity, Neurotrophin signaling pathway, Non-small cell lung cancer, Pancreatic cancer, Pathways in cancer, Progesterone-mediated oocyte maturation, Prostate cancer, Regulation of actin cytoskeleton, Renal cell carcinoma, Thyroid cancer, Vascular smooth muscle contraction

Product images:

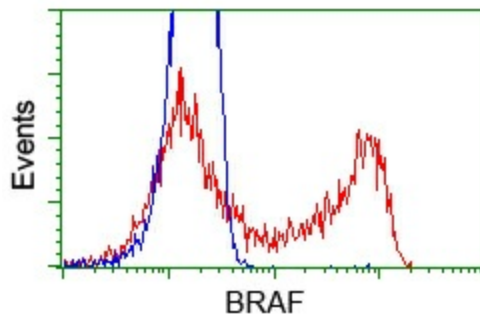
HEK293T cells were transfected with the pCMV6-ENTRY control (Left lane) or pCMV6-ENTRY BRAF ([RC211013], Right lane) cDNA for 48 hrs and lysed. Equivalent amounts of cell lysates (5 ug per lane) were separated by SDS-PAGE and immunoblotted with anti-BRAF (1:500).



Anti-BRAF mouse monoclonal antibody ([TA500852]) immunofluorescent staining of COS7 cells transiently transfected by pCMV6-ENTRY BRAF ([RC211013]).



Immunoprecipitation (IP) of BRAF by using TrueMab monoclonal anti-BRAF antibodies (Negative control: IP without adding anti-BRAF antibody.). For each experiment, 500ul of DDK tagged BRAF overexpression lysates (at 1:5 dilution with HEK293T lysate), 2ug of anti-BRAF antibody and 20ul (0.1mg) of goat anti-mouse conjugated magnetic beads were mixed and incubated overnight. After extensive wash to remove any non-specific binding, the immunoprecipitated products were analyzed with rabbit anti-DDK polyclonal antibody.



HEK293T cells transfected with either pCMV6-ENTRY BRAF ([RC211013]) (Red) or empty vector control plasmid (Blue) were immunostained with anti-BRAF mouse monoclonal ([TA500852]), and then analyzed by flow cytometry.