

Product datasheet for **TA500847S**

XRCC1 Mouse Monoclonal Antibody [Clone ID: OTI3C3]

Product data:

Product Type:	Primary Antibodies
Clone Name:	OTI3C3
Applications:	IF, WB
Recommended Dilution:	WB 1:2000, IF 1:100
Reactivity:	Human, Mouse, Rat
Host:	Mouse
Isotype:	IgG1
Clonality:	Monoclonal
Immunogen:	Full length human recombinant protein of human XRCC1 (NP_006288) produced in HEK293T cell.
Formulation:	PBS (pH 7.3) containing 1% BSA, 50% glycerol and 0.02% sodium azide.
Concentration:	1 mg/ml
Purification:	Purified from mouse ascites fluids or tissue culture supernatant by affinity chromatography (protein A/G)
Conjugation:	Unconjugated
Storage:	Store at -20°C as received.
Stability:	Stable for 12 months from date of receipt.
Predicted Protein Size:	69.5 kDa
Gene Name:	X-ray repair cross complementing 1
Database Link:	NP_006288 Entrez Gene 22594 Mouse Entrez Gene 84495 Rat Entrez Gene 7515 Human P18887
Background:	The protein encoded by this gene is involved in the efficient repair of DNA single-strand breaks formed by exposure to ionizing radiation and alkylating agents. This protein interacts with DNA ligase III, polymerase beta and poly (ADP-ribose) polymerase to participate in the base excision repair pathway. It may play a role in DNA processing during meiosis and recombination in germ cells. A rare microsatellite polymorphism in this gene is associated with cancer in patients of varying radiosensitivity.



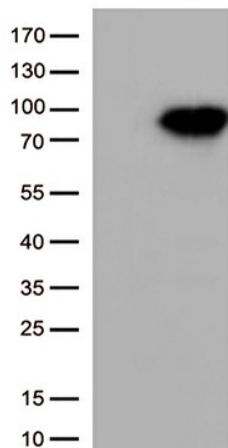
[View online »](#)

Synonyms: RCC

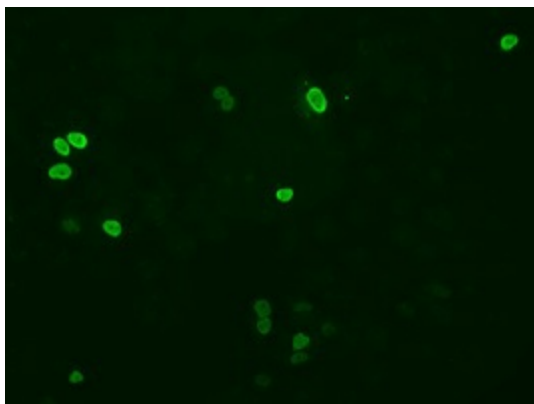
Protein Families: Druggable Genome

Protein Pathways: Base excision repair

Product images:



HEK293T cells were transfected with the pCMV6-ENTRY control (Left lane) or pCMV6-ENTRY XRCC1 ([RC204952], Right lane) cDNA for 48 hrs and lysed. Equivalent amounts of cell lysates (5 ug per lane) were separated by SDS-PAGE and immunoblotted with anti-XRCC1 (1:1000).



Anti-XRCC1 mouse monoclonal antibody ([TA500847]) immunofluorescent staining of COS7 cells transiently transfected by pCMV6-ENTRY XRCC1 ([RC204952]).