

Product datasheet for **TA500846M**

GBE1 Mouse Monoclonal Antibody [Clone ID: OTI4A1]

Product data:

Product Type:	Primary Antibodies
Clone Name:	OTI4A1
Applications:	FC, IF, IP
Recommended Dilution:	IF 1:50~100, FLOW 1:100, IP 2ug/500ul
Reactivity:	Human, Mouse, Rat
Host:	Mouse
Isotype:	IgG1
Clonality:	Monoclonal
Immunogen:	Full length human recombinant protein of human GBE1 (NP_000149) produced in HEK293T cell.
Formulation:	PBS (pH 7.3) containing 1% BSA, 50% glycerol and 0.02% sodium azide.
Concentration:	0.95 mg/ml
Purification:	Purified from mouse ascites fluids or tissue culture supernatant by affinity chromatography (protein A/G)
Conjugation:	Unconjugated
Storage:	Store at -20°C as received.
Stability:	Stable for 12 months from date of receipt.
Predicted Protein Size:	80.3 kDa
Gene Name:	1,4-alpha-glucan branching enzyme 1
Database Link:	NP_000149 Entrez Gene 2632 Human Q04446

[View online »](#)

Background:

The protein encoded by this gene is a glycogen branching enzyme that catalyzes the transfer of alpha-1,4-linked glucosyl units from the outer end of a glycogen chain to an alpha-1,6 position on the same or a neighboring glycogen chain. Branching of the chains is essential to increase the solubility of the glycogen molecule and, consequently, in reducing the osmotic pressure within cells. Highest level of this enzyme are found in liver and muscle. Mutations in this gene are associated with glycogen storage disease IV (also known as Andersen's disease). [provided by RefSeq]

Synonyms:

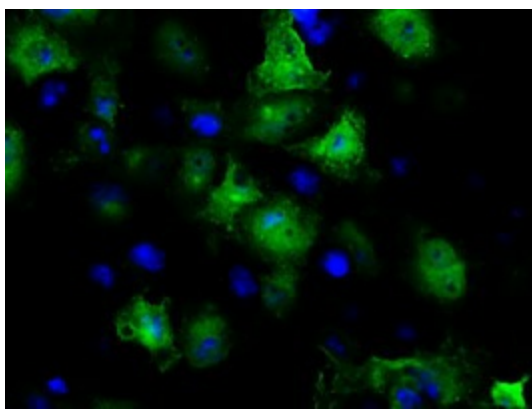
APBD; GBE; GSD4

Protein Families:

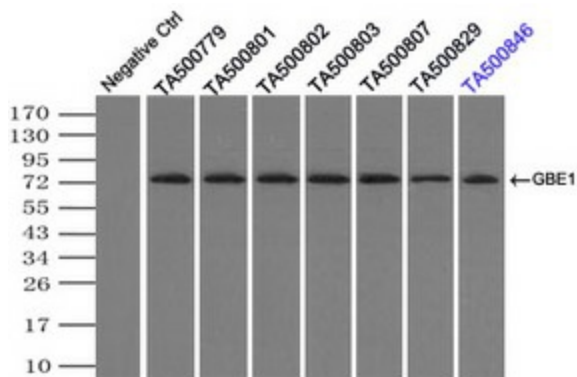
Druggable Genome

Protein Pathways:

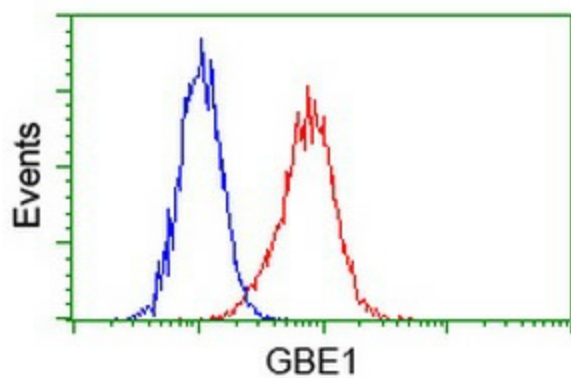
Metabolic pathways, Starch and sucrose metabolism

Product images:


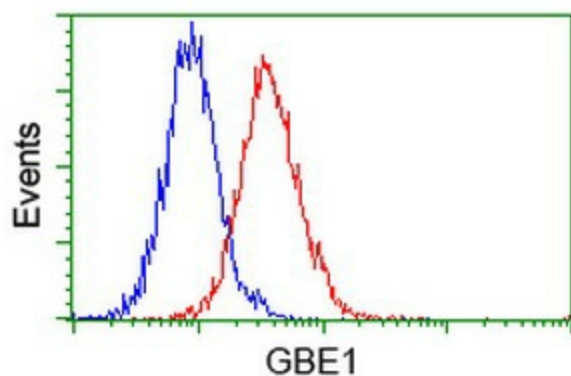
Anti-GBE1 mouse monoclonal antibody ([TA500846]) immunofluorescent staining of COS7 cells transiently transfected by pCMV6-ENTRY GBE1 ([RC204152]).



Immunoprecipitation (IP) of GBE1 by using TrueMab monoclonal anti-GBE1 antibodies (Negative control: IP without adding anti-GBE1 antibody.). For each experiment, 500ul of DDK tagged GBE1 overexpression lysates (at 1:5 dilution with HEK293T lysate), 2ug of anti-GBE1 antibody and 20ul (0.1mg) of goat anti-mouse conjugated magnetic beads were mixed and incubated overnight. After extensive wash to remove any non-specific binding, the immunoprecipitated products were analyzed with rabbit anti-DDK polyclonal antibody.



Flow cytometric Analysis of HeLa cells, using anti-GBE1 antibody ([TA500846]), (Red), compared to a nonspecific negative control antibody, (Blue).



Flow cytometric Analysis of Jurkat cells, using anti-GBE1 antibody ([TA500846]), (Red), compared to a nonspecific negative control antibody, (Blue).