

## Product datasheet for **TA500843M**

### Claudin 5 (CLDN5) Mouse Monoclonal Antibody [Clone ID: OTI1G4]

#### Product data:

Product Type:	Primary Antibodies
Clone Name:	OTI1G4
Applications:	IF, IHC, WB
Recommended Dilution:	IF 1:100, WB 1:500, IHC 1:100
Reactivity:	Human
Host:	Mouse
Isotype:	IgG1
Clonality:	Monoclonal
Immunogen:	Full length human recombinant protein of human CLDN5(NP_003268) produced in HEK293T cell.
Formulation:	PBS (pH 7.3) containing 1% BSA, 50% glycerol and 0.02% sodium azide.
Concentration:	1 mg/ml
Purification:	Purified from mouse ascites fluids or tissue culture supernatant by affinity chromatography (protein A/G)
Conjugation:	Unconjugated
Storage:	Store at -20°C as received.
Stability:	Stable for 12 months from date of receipt.
Predicted Protein Size:	23 kDa
Gene Name:	claudin 5
Database Link:	<a href="#">NP_003268</a> <a href="#">Entrez Gene 7122 Human</a> <a href="#">O00501</a>
Background:	This gene encodes a member of the claudin family. Claudins are integral membrane proteins and components of tight junction strands. Tight junction strands serve as a physical barrier to prevent solutes and water from passing freely through the paracellular space between epithelial or endothelial cell sheets. Mutations in this gene have been found in patients with velocardiofacial syndrome. Alternatively spliced transcript variants encoding the same protein have been found for this gene. [provided by RefSeq]


[View online »](#)

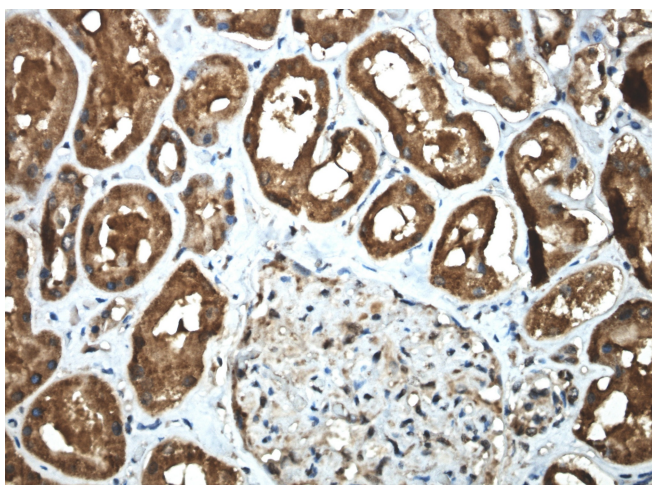
**Synonyms:** AWAL; BEC1; CPETRL1; TMVCF

**Note:** WB application: Only overexpression results are guaranteed, not endogenous.

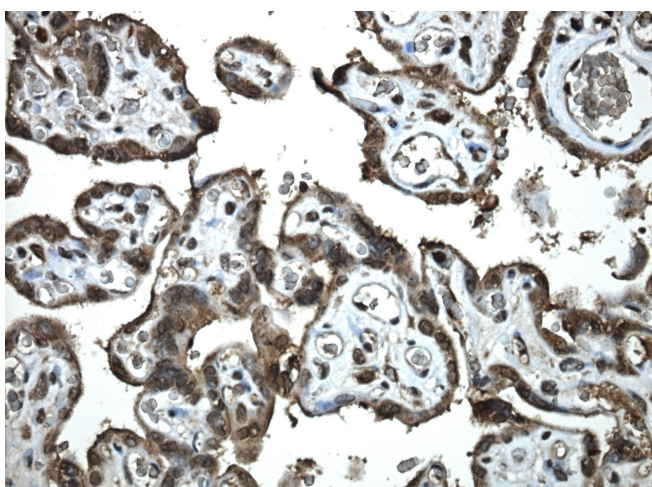
**Protein Families:** Transmembrane

**Protein Pathways:** Cell adhesion molecules (CAMs), Leukocyte transendothelial migration, Tight junction

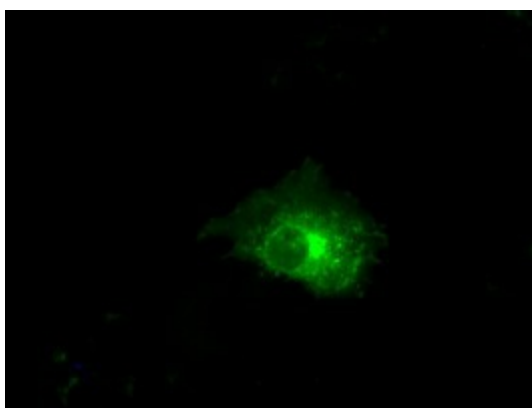
### Product images:



Immunohistochemical staining of paraffin-embedded normal kidney using CLD5 antibody [TA500843] clone OT11G4 mouse monoclonal antibody. Protocol used HIER TEE pH9.0 (cat# [B21-100]) and anti-CLD5 at 1:100 dilution. Detection was done with Polink1 Broad Mouse and Rabbit C/N [D11-18] with DAB Kit. Image 40x magnification.



Immunohistochemical staining of paraffin-embedded placenta using CLD5 antibody [TA500843] clone OT11G4 mouse monoclonal antibody. Protocol used HIER TEE pH9.0 (cat# [B21-100]) and anti-CLD5 at 1:100 dilution. Detection was done with Polink1 Broad Mouse and Rabbit C/N [D11-18] with DAB Kit. Image 40x magnification.



Anti-CLDN5 mouse monoclonal antibody ([TA500843]) immunofluorescent staining of COS7 cells transiently transfected by pCMV6-ENTRY CLDN5 ([RC207122]).

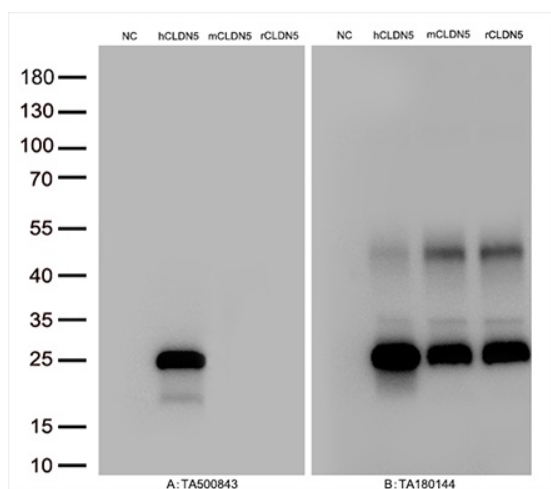


Figure A, Western blot analysis of overexpressed lysates(15ug per lane) from HEK293T cells transfected with empty plasmid ([PS100001], NC) , human CLDN5 plasmid ([RC207122], hCLDN5), mouse CLDN5 plasmid ([MR202442], mCLDN5), rat CLDN5 plasmid ([RR202322], rCLDN5) using anti-CLDN5 antibody [TA500843](1:500). Figure B, Western blot analysis of the same samples as figure A with anti-DDK antibody ([TA180144], 1:1000)