

Product datasheet for **TA500840S**

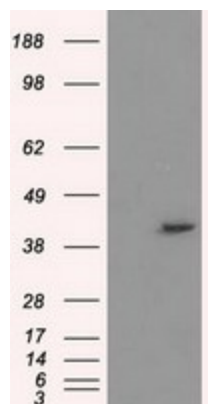
PPME1 Mouse Monoclonal Antibody [Clone ID: OTI6H5]

Product data:

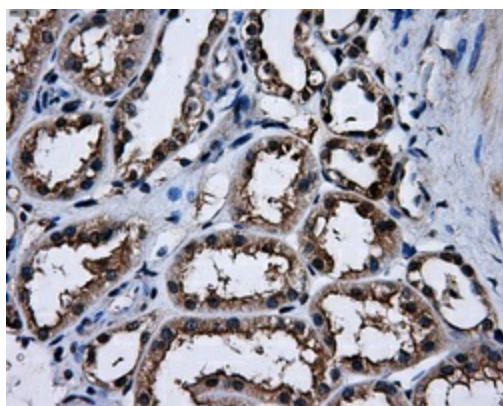
Product Type:	Primary Antibodies
Clone Name:	OTI6H5
Applications:	IF, IHC, WB
Recommended Dilution:	WB 1:1000, IHC 1:50, IF 1:100
Reactivity:	Human, Mouse, Rat
Host:	Mouse
Isotype:	IgG1
Clonality:	Monoclonal
Immunogen:	Full length human recombinant protein of human PPME1 (NP_057231) produced in HEK293T cell.
Formulation:	PBS (pH 7.3) containing 1% BSA, 50% glycerol and 0.02% sodium azide.
Concentration:	0.83 mg/ml
Purification:	Purified from mouse ascites fluids or tissue culture supernatant by affinity chromatography (protein A/G)
Conjugation:	Unconjugated
Storage:	Store at -20°C as received.
Stability:	Stable for 12 months from date of receipt.
Predicted Protein Size:	42.3 kDa
Gene Name:	protein phosphatase methylesterase 1
Database Link:	NP_057231 Entrez Gene 72590 Mouse Entrez Gene 361613 Rat Entrez Gene 51400 Human Q9Y570
Background:	Protein phosphatase methylesterase-1 catalyzes the demethylation of the protein phosphatase-2A catalytic subunit
Synonyms:	PME-1
Protein Families:	Druggable Genome



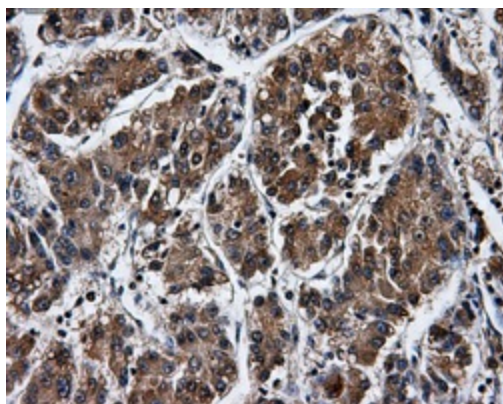
[View online »](#)

Product images:

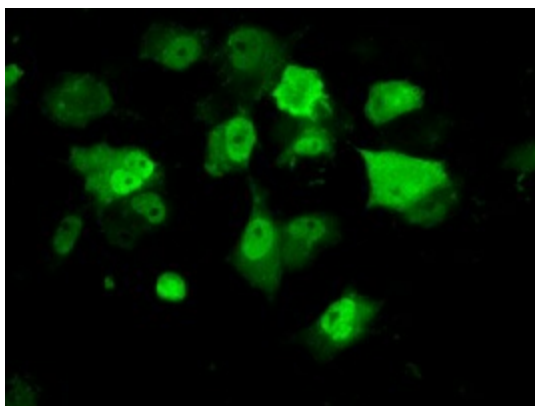
HEK293T cells were transfected with the pCMV6-ENTRY control (Left lane) or pCMV6-ENTRY PPME1 ([RC200009], Right lane) cDNA for 48 hrs and lysed. Equivalent amounts of cell lysates (5 ug per lane) were separated by SDS-PAGE and immunoblotted with anti-PPME1. Positive lysates [LY402509] (100ug) and [LC402509] (20ug) can be purchased separately from OriGene.



Immunohistochemical staining of paraffin-embedded Kidney tissue within the normal limits using anti-PPME1 mouse monoclonal antibody. (Heat-induced epitope retrieval by 10mM citric buffer, pH6.0, 100°C for 10min, [TA500840], Dilution 1:50)



Immunohistochemical staining of paraffin-embedded Carcinoma of liver tissue using anti-PPME1 mouse monoclonal antibody. (Heat-induced epitope retrieval by 10mM citric buffer, pH6.0, 100°C for 10min, [TA500840], Dilution 1:50)



Anti-PPME1 mouse monoclonal antibody ([TA500840]) immunofluorescent staining of COS7 cells transiently transfected by pCMV6-ENTRY PPME1 ([RC200009]).