

## Product datasheet for **TA500839**

### PKMYT1 Mouse Monoclonal Antibody [Clone ID: OTI2B4]

#### Product data:

Product Type:	Primary Antibodies
Clone Name:	OTI2B4
Applications:	FC, IF, WB
Recommended Dilution:	IHC 1:100~200, WB: 1:200
Reactivity:	Human, Mouse, Rat
Host:	Mouse
Isotype:	IgG2a
Clonality:	Monoclonal
Immunogen:	Full length human recombinant protein of human PKMYT1 (NP_004194) produced in HEK293T cell.
Formulation:	PBS (pH 7.3) containing 1% BSA, 50% glycerol and 0.02% sodium azide.
Concentration:	1 mg/ml
Purification:	Purified from mouse ascites fluids or tissue culture supernatant by affinity chromatography (protein A/G)
Conjugation:	Unconjugated
Storage:	Store at -20°C as received.
Stability:	Stable for 12 months from date of receipt.
Predicted Protein Size:	54.3 kDa
Gene Name:	protein kinase, membrane associated tyrosine/threonine 1
Database Link:	<a href="#">NP_004194</a> <a href="#">Entrez Gene 268930</a> <a href="#">MouseEntrez Gene 287101</a> <a href="#">RatEntrez Gene 9088</a> <a href="#">Human Q99640</a>



[View online »](#)

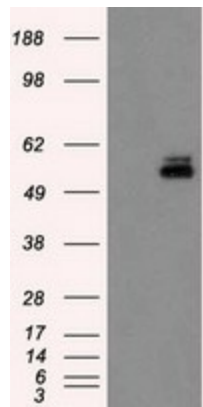
**Background:** The protein encoded by this gene is a member of the serine/threonine protein kinase family. This kinase preferentially phosphorylates and inactivates cell division cycle 2 protein (CDC2), and thus negatively regulates cell cycle G2/M transition. This kinase is associated with the membrane throughout the cell cycle. Its activity is highly regulated during the cell cycle. Protein kinases AKT1/PKB and PLK (Polo-like kinase) have been shown to phosphorylate and regulate the activity of this kinase. Alternatively spliced transcript variants encoding distinct isoforms have been reported. [provided by RefSeq]

**Synonyms:** MYT1; PPP1R126

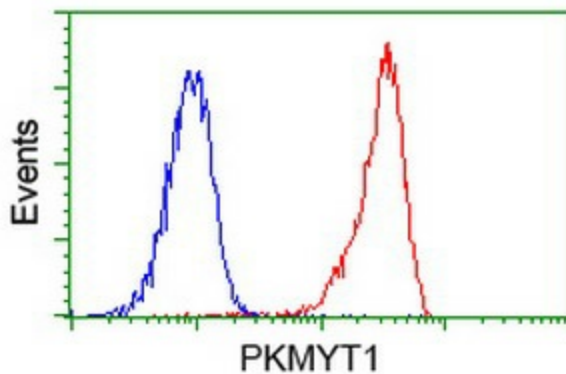
**Protein Families:** Druggable Genome, Protein Kinase

**Protein Pathways:** Cell cycle, Oocyte meiosis, Progesterone-mediated oocyte maturation

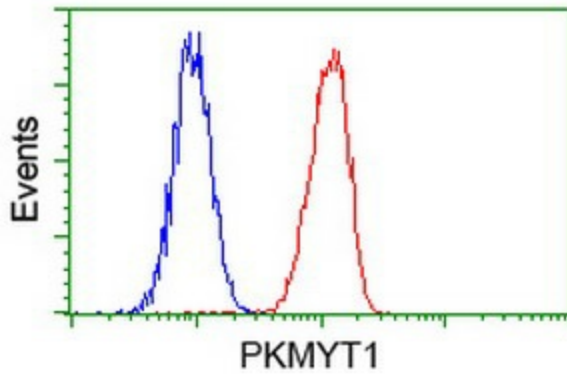
### Product images:



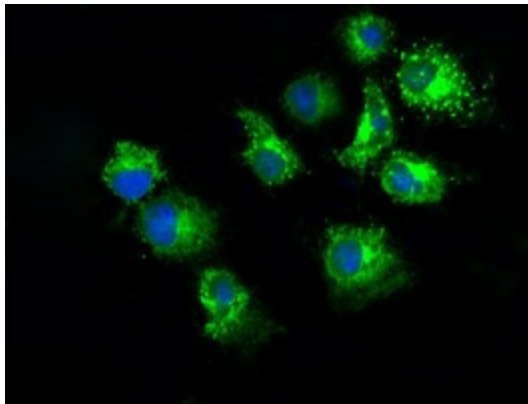
HEK293T cells were transfected with the pCMV6-ENTRY control (Left lane) or pCMV6-ENTRY PKMYT1 ([RC222657], Right lane) cDNA for 48 hrs and lysed. Equivalent amounts of cell lysates (5 ug per lane) were separated by SDS-PAGE and immunoblotted with anti-PKMYT1. Positive lysates [LY401358] (100ug) and [LC401358] (20ug) can be purchased separately from OriGene.



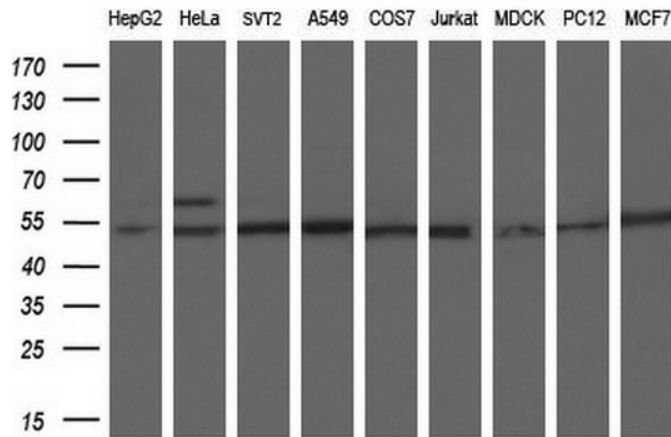
Flow cytometric Analysis of Jurkat cells, using anti-PKMYT1 antibody (TA500839), (Red), compared to a nonspecific negative control antibody, (Blue).



Flow cytometric Analysis of HeLa cells, using anti-PKMYT1 antibody (TA500839), (Red), compared to a nonspecific negative control antibody, (Blue).



Anti-PKMYT1 mouse monoclonal antibody (TA500839) immunofluorescent staining of COS7 cells transiently transfected by pCMV6-ENTRY PKMYT1 ([RC222657]).



Western blot analysis of extracts (35ug) from 9 different cell lines by using anti-PKMYT1 monoclonal antibody (HepG2: human; HeLa: human; SVT2: mouse; A549: human; COS7: monkey; Jurkat: human; MDCK: canine; PC12: rat; MCF7: human) (1:200).