

## Product datasheet for **TA500828BM**

### **HSP70-1A (HSPA1A) Mouse Monoclonal Antibody (HRP conjugated) [Clone ID: OTI1H5]**

#### **Product data:**

Product Type:	Primary Antibodies
Clone Name:	OTI1H5
Applications:	IHC, WB
Recommended Dilution:	WB 1:2000, IHC 1:50
Reactivity:	Human, Mouse, Rat
Host:	Mouse
Isotype:	IgG2b
Clonality:	Monoclonal
Immunogen:	Full length human recombinant protein of human HSPA1A (NP_005336) produced in HEK293T cell.
Formulation:	PBS (pH 7.3) containing 1% BSA, 50% glycerol.
Concentration:	0.5 mg/ml
Purification:	Purified from mouse ascites fluids or tissue culture supernatant by affinity chromatography (protein A/G)
Conjugation:	HRP
Storage:	Store at -20°C as received.
Stability:	Stable for 12 months from date of receipt.
Predicted Protein Size:	70.0 kDa
Gene Name:	heat shock protein family A (Hsp70) member 1A
Database Link:	<a href="#">NP_005336</a> <a href="#">Entrez Gene 24472 Rat</a> <a href="#">Entrez Gene 193740 Mouse</a> <a href="#">Entrez Gene 3303 Human</a> <a href="#">P0DMV8</a>



[View online »](#)

**Background:**

This intronless gene encodes a 70kDa heat shock protein which is a member of the heat shock protein 70 family. In conjunction with other heat shock proteins, this protein stabilizes existing proteins against aggregation and mediates the folding of newly translated proteins in the cytosol and in organelles. It is also involved in the ubiquitin-proteasome pathway through interaction with the AU-rich element RNA-binding protein 1. The gene is located in the major histocompatibility complex class III region, in a cluster with two closely related genes which encode similar proteins.

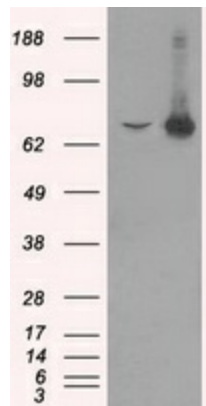
**Synonyms:**

HEL-S-103; HSP70-1; HSP70-1A; HSP70.1; HSP70I; HSP72; HSPA1

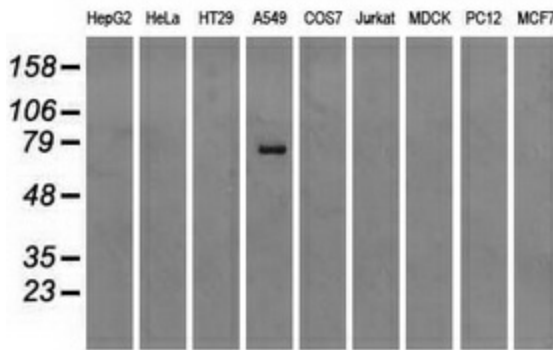
**Protein Pathways:**

Antigen processing and presentation, Endocytosis, MAPK signaling pathway, Prion diseases, Spliceosome

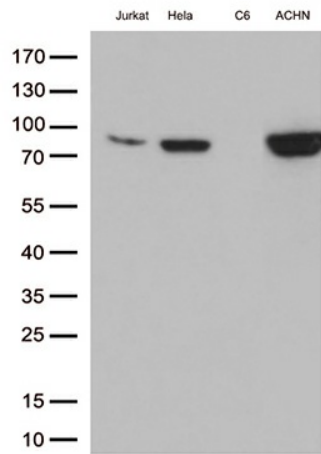
**Product images:**



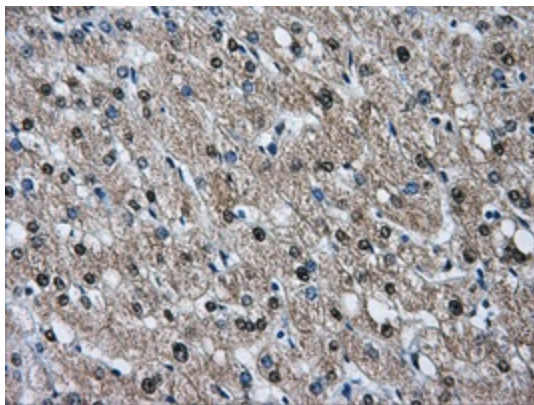
HEK293T cells were transfected with the pCMV6-ENTRY control (Left lane) or pCMV6-ENTRY HSPA1A ([RC200270], Right lane) cDNA for 48 hrs and lysed. Equivalent amounts of cell lysates (5 ug per lane) were separated by SDS-PAGE and immunoblotted with anti-HSPA1A. Positive lysates [LY401646] (100ug) and [LC401646] (20ug) can be purchased separately from OriGene.



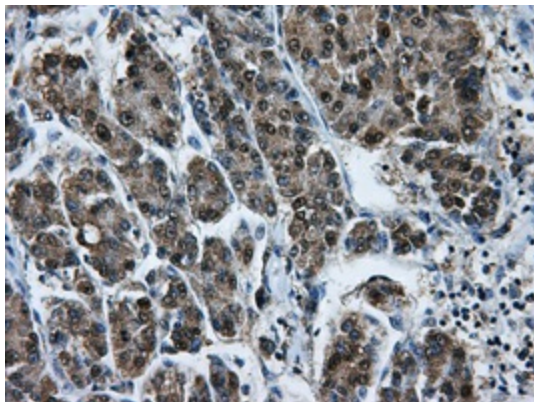
Western blot analysis of extracts (35ug) from 9 different cell lines by using anti-HSPA1A monoclonal antibody.



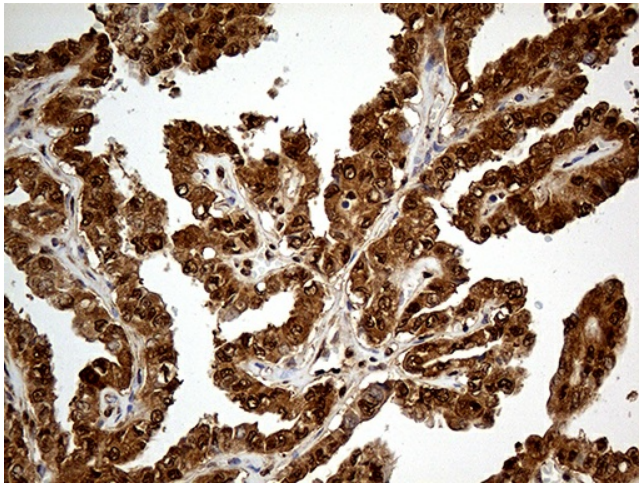
Western blot analysis of extracts (35ug) from 4 cell lines lysates by using anti-HSPA1A monoclonal antibody (1:500).



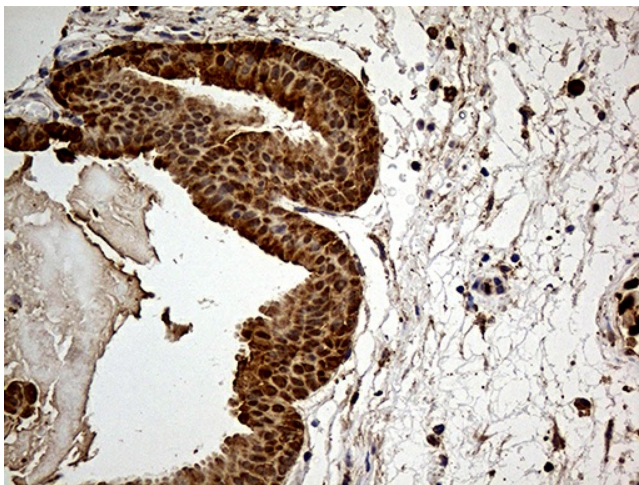
Immunohistochemical staining of paraffin-embedded liver tissue within the normal limits using anti-HSPA1A mouse monoclonal antibody. (Heat-induced epitope retrieval by 10mM citric buffer, pH6.0, 100°C for 10min, [TA500828], Dilution 1:50)



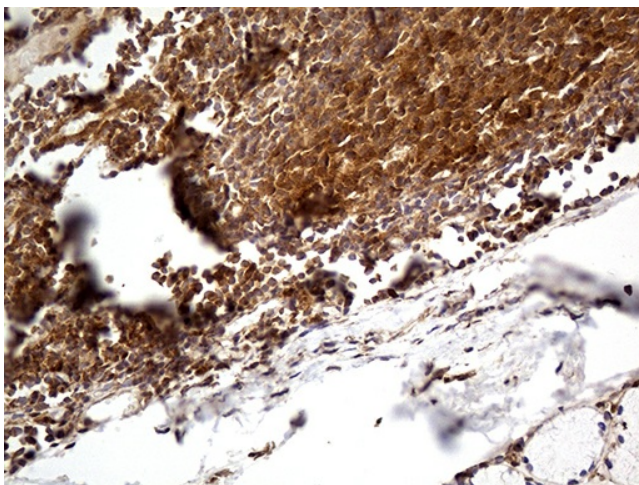
Immunohistochemical staining of paraffin-embedded Carcinoma of liver tissue using anti-HSPA1A mouse monoclonal antibody. (Heat-induced epitope retrieval by 10mM citric buffer, pH6.0, 100°C for 10min, [TA500828], Dilution 1:50)



Immunohistochemical staining of paraffin-embedded Carcinoma of Human thyroid tissue using anti-HSPA1A mouse monoclonal antibody. (Heat-induced epitope retrieval by 1mM EDTA in 10mM Tris buffer (pH8.5) at 120°C for 3min, [TA500828]) (1:500)



Immunohistochemical staining of paraffin-embedded Human prostate tissue within the normal limits using anti-HSPA1A mouse monoclonal antibody. (Heat-induced epitope retrieval by 1mM EDTA in 10mM Tris buffer (pH8.5) at 120°C for 3min, [TA500828]) (1:500)



Immunohistochemical staining of paraffin-embedded Human tonsil within the normal limits using anti-HSPA1A mouse monoclonal antibody. (Heat-induced epitope retrieval by 1mM EDTA in 10mM Tris buffer (pH8.5) at 120°C for 3min, [TA500828]) (1:500)