

Product datasheet for **TA500826S**

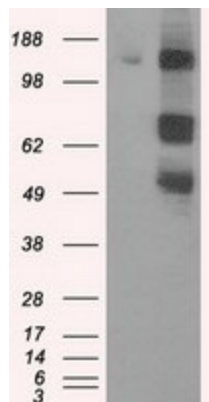
PASK Mouse Monoclonal Antibody [Clone ID: OTI8G9]

Product data:

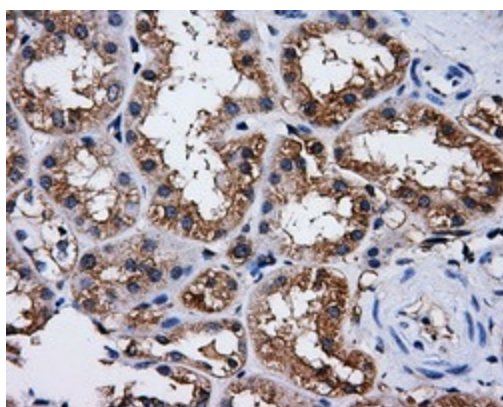
Product Type:	Primary Antibodies
Clone Name:	OTI8G9
Applications:	FC, IF, IHC, WB
Recommended Dilution:	WB 1:2000, IHC 1:50, IF 1:100, FLOW 1:100
Reactivity:	Human
Host:	Mouse
Isotype:	IgG2a
Clonality:	Monoclonal
Immunogen:	Full length human recombinant protein of human PASK (NP_055963) produced in HEK293T cell.
Formulation:	PBS (pH 7.3) containing 1% BSA, 50% glycerol and 0.02% sodium azide.
Concentration:	0.93 mg/ml
Purification:	Purified from mouse ascites fluids or tissue culture supernatant by affinity chromatography (protein A/G)
Conjugation:	Unconjugated
Storage:	Store at -20°C as received.
Stability:	Stable for 12 months from date of receipt.
Predicted Protein Size:	142.7 kDa
Gene Name:	PAS domain containing serine/threonine kinase
Database Link:	NP_055963 Entrez Gene 23178 Human Q96RG2
Background:	PAS domains regulate the function of many intracellular signaling pathways in response to both extrinsic and intrinsic stimuli. PASK is an evolutionarily conserved protein present in yeast, flies, and mammals. [supplied by OMIM]
Synonyms:	PASKIN; STK37
Protein Families:	Druggable Genome, Protein Kinase, Stem cell - Pluripotency



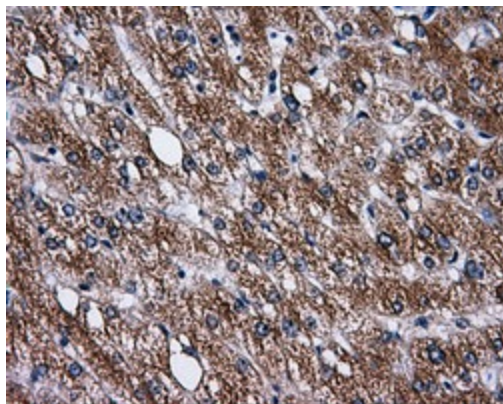
[View online »](#)

Product images:

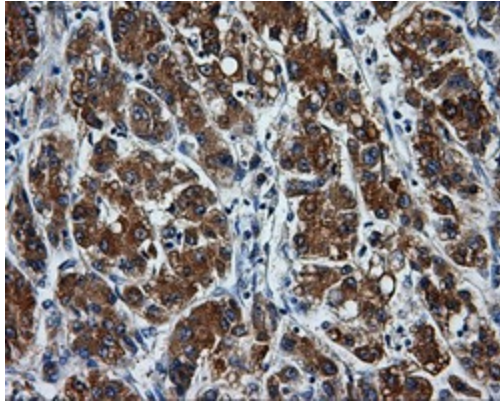
HEK293T cells were transfected with the pCMV6-ENTRY control (Cat# [PS100001], Left lane) or pCMV6-ENTRY PASK (Cat# [RC209096], Right lane) cDNA for 48 hrs and lysed. Equivalent amounts of cell lysates (5 ug per lane) were separated by SDS-PAGE and immunoblotted with anti-PASK (Cat# [TA500826]). Positive lysates [LY414744] (100ug) and [LC414744] (20ug) can be purchased separately from OriGene.



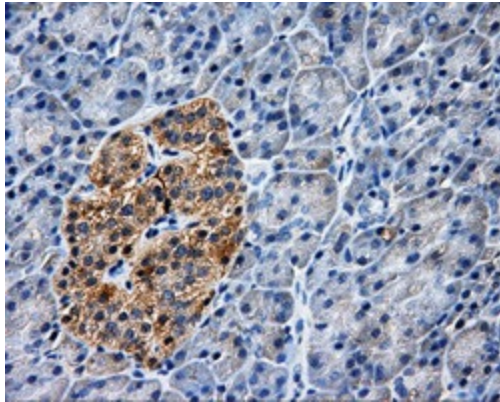
Immunohistochemical staining of paraffin-embedded Human Kidney tissue within the normal limits using anti-PASK mouse monoclonal antibody. (Heat-induced epitope retrieval by 10mM citric buffer, pH6.0, 100°C for 10min, [TA500826])



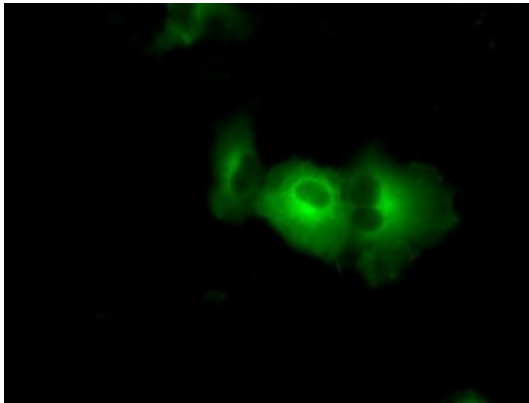
Immunohistochemical staining of paraffin-embedded Human liver tissue within the normal limits using anti-PASK mouse monoclonal antibody. (Heat-induced epitope retrieval by 10mM citric buffer, pH6.0, 100°C for 10min, [TA500826])



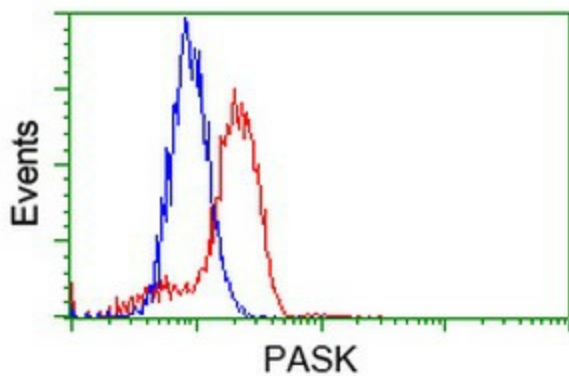
Immunohistochemical staining of paraffin-embedded Carcinoma of Human liver tissue using anti-PASK mouse monoclonal antibody. (Heat-induced epitope retrieval by 10mM citric buffer, pH6.0, 100°C for 10min, [TA500826])



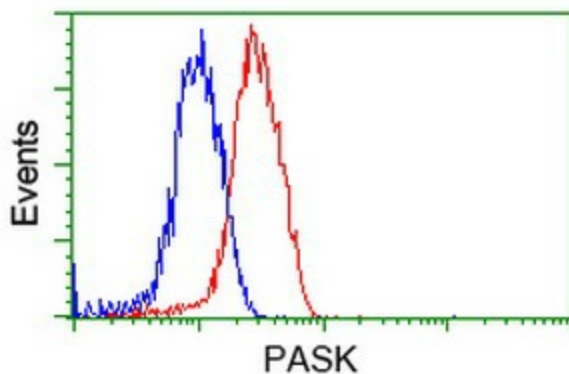
Immunohistochemical staining of paraffin-embedded Human pancreas tissue within the normal limits using anti-PASK mouse monoclonal antibody. (Heat-induced epitope retrieval by 10mM citric buffer, pH6.0, 100°C for 10min, [TA500826])



Anti-PASK mouse monoclonal antibody ([TA500826]) immunofluorescent staining of COS7 cells transiently transfected by pCMV6-ENTRY PASK ([RC209096]).



Flow cytometric Analysis of HeLa cells, using anti-PASK antibody ([TA500826]), (Red), compared to a nonspecific negative control antibody, (Blue).



Flow cytometric Analysis of Jurkat cells, using anti-PASK antibody ([TA500826]), (Red), compared to a nonspecific negative control antibody, (Blue).