

## Product datasheet for **TA500826BM**

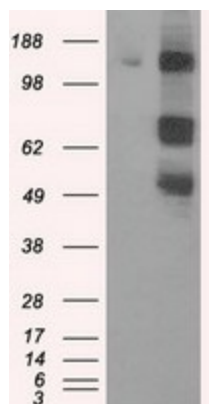
### **PASK Mouse Monoclonal Antibody (HRP conjugated) [Clone ID: OTI8G9]**

#### **Product data:**

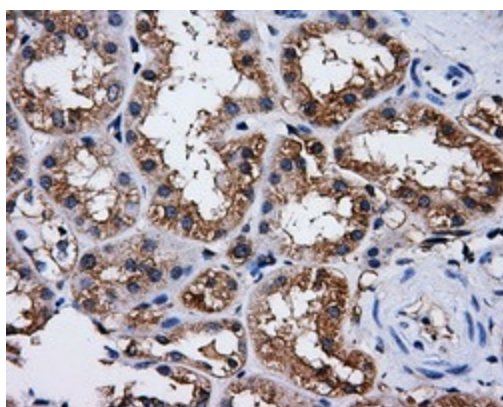
<b>Product Type:</b>	Primary Antibodies
<b>Clone Name:</b>	OTI8G9
<b>Applications:</b>	FC, IF, IHC, WB
<b>Recommended Dilution:</b>	WB 1:2000, IHC 1:50, IF 1:100, FLOW 1:100
<b>Reactivity:</b>	Human
<b>Host:</b>	Mouse
<b>Isotype:</b>	IgG2a
<b>Clonality:</b>	Monoclonal
<b>Immunogen:</b>	Full length human recombinant protein of human PASK (NP_055963) produced in HEK293T cell.
<b>Formulation:</b>	PBS (pH 7.3) containing 1% BSA, 50% glycerol.
<b>Concentration:</b>	0.5 mg/ml
<b>Purification:</b>	Purified from mouse ascites fluids or tissue culture supernatant by affinity chromatography (protein A/G)
<b>Conjugation:</b>	HRP
<b>Storage:</b>	Store at -20°C as received.
<b>Stability:</b>	Stable for 12 months from date of receipt.
<b>Predicted Protein Size:</b>	142.7 kDa
<b>Gene Name:</b>	PAS domain containing serine/threonine kinase
<b>Database Link:</b>	<a href="#">NP_055963</a> <a href="#">Entrez Gene 23178 Human</a> <a href="#">Q96RG2</a>
<b>Background:</b>	PAS domains regulate the function of many intracellular signaling pathways in response to both extrinsic and intrinsic stimuli. PASK is an evolutionarily conserved protein present in yeast, flies, and mammals. [supplied by OMIM]
<b>Synonyms:</b>	PASKIN; STK37
<b>Protein Families:</b>	Druggable Genome, Protein Kinase, Stem cell - Pluripotency



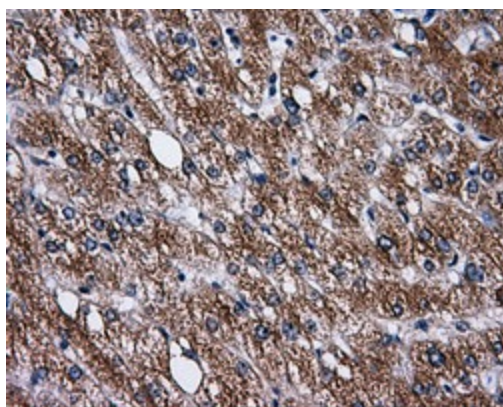
[View online »](#)

**Product images:**

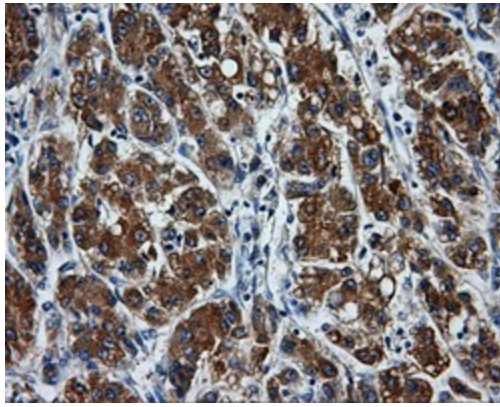
HEK293T cells were transfected with the pCMV6-ENTRY control (Cat# [PS100001], Left lane) or pCMV6-ENTRY PASK (Cat# [RC209096], Right lane) cDNA for 48 hrs and lysed. Equivalent amounts of cell lysates (5 ug per lane) were separated by SDS-PAGE and immunoblotted with anti-PASK (Cat# [TA500826]). Positive lysates [LY414744] (100ug) and [LC414744] (20ug) can be purchased separately from OriGene.



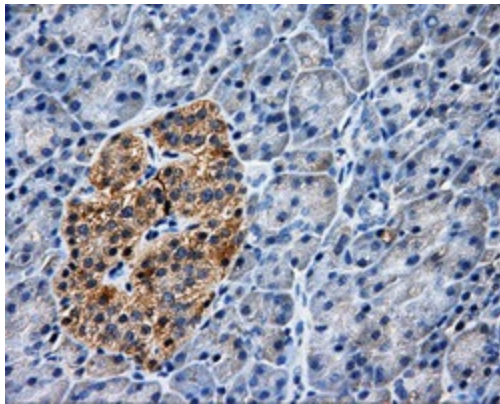
Immunohistochemical staining of paraffin-embedded Human Kidney tissue within the normal limits using anti-PASK mouse monoclonal antibody. (Heat-induced epitope retrieval by 10mM citric buffer, pH6.0, 100°C for 10min, [TA500826])



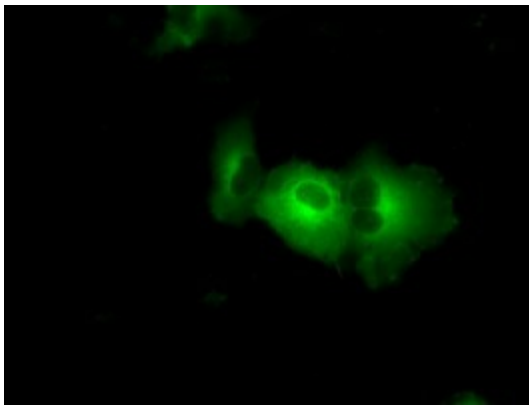
Immunohistochemical staining of paraffin-embedded Human liver tissue within the normal limits using anti-PASK mouse monoclonal antibody. (Heat-induced epitope retrieval by 10mM citric buffer, pH6.0, 100°C for 10min, [TA500826])



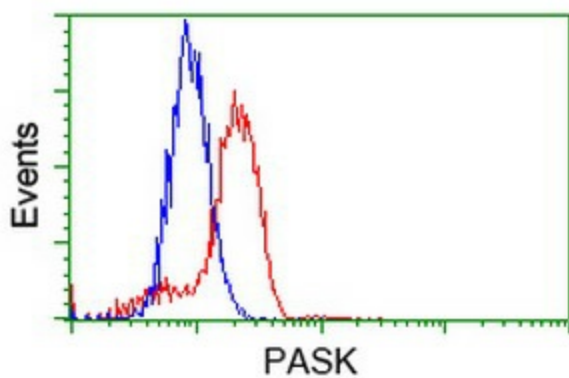
Immunohistochemical staining of paraffin-embedded Carcinoma of Human liver tissue using anti-PASK mouse monoclonal antibody. (Heat-induced epitope retrieval by 10mM citric buffer, pH6.0, 100°C for 10min, [TA500826])



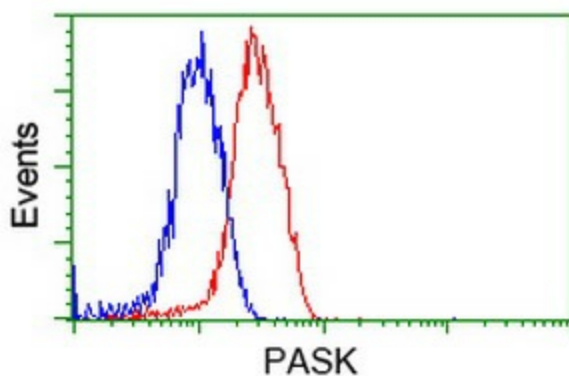
Immunohistochemical staining of paraffin-embedded Human pancreas tissue within the normal limits using anti-PASK mouse monoclonal antibody. (Heat-induced epitope retrieval by 10mM citric buffer, pH6.0, 100°C for 10min, [TA500826])



Anti-PASK mouse monoclonal antibody ([TA500826]) immunofluorescent staining of COS7 cells transiently transfected by pCMV6-ENTRY PASK ([RC209096]).



Flow cytometric Analysis of HeLa cells, using anti-PASK antibody ([TA500826]), (Red), compared to a nonspecific negative control antibody, (Blue).



Flow cytometric Analysis of Jurkat cells, using anti-PASK antibody ([TA500826]), (Red), compared to a nonspecific negative control antibody, (Blue).