

## Product datasheet for TA500822M

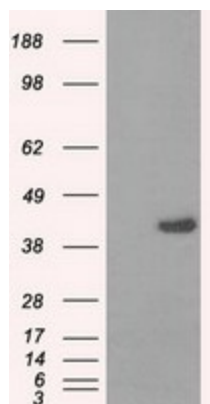
### PPME1 Mouse Monoclonal Antibody [Clone ID: OTI10A12]

#### Product data:

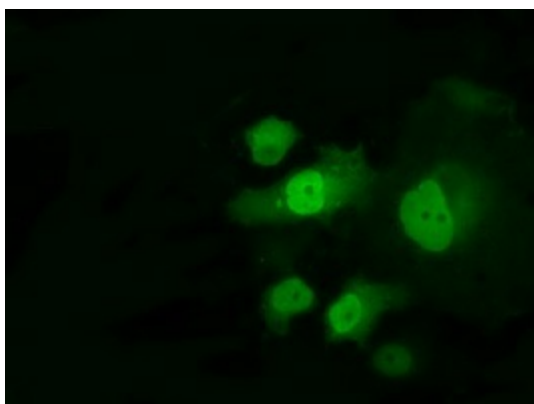
Product Type:	Primary Antibodies
Clone Name:	OTI10A12
Applications:	FC, IF, WB
Recommended Dilution:	WB 1:2000, IF 1:100, Flow 1:100
Reactivity:	Human, Mouse, Rat
Host:	Mouse
Isotype:	IgG2a
Clonality:	Monoclonal
Immunogen:	Full length human recombinant protein of human PPME1 (NP_057231) produced in HEK293T cell.
Formulation:	PBS (pH 7.3) containing 1% BSA, 50% glycerol and 0.02% sodium azide.
Concentration:	1 mg/ml
Purification:	Purified from mouse ascites fluids or tissue culture supernatant by affinity chromatography (protein A/G)
Conjugation:	Unconjugated
Storage:	Store at -20°C as received.
Stability:	Stable for 12 months from date of receipt.
Predicted Protein Size:	42.3 kDa
Gene Name:	protein phosphatase methylesterase 1
Database Link:	<a href="#">NP_057231</a> <a href="#">Entrez Gene 72590 Mouse</a> <a href="#">Entrez Gene 361613 Rat</a> <a href="#">Entrez Gene 51400 Human</a> <a href="#">Q9Y570</a>
Background:	Protein phosphatase methylesterase-1 catalyzes the demethylation of the protein phosphatase-2A catalytic subunit
Synonyms:	PME-1
Protein Families:	Druggable Genome


[View online »](#)

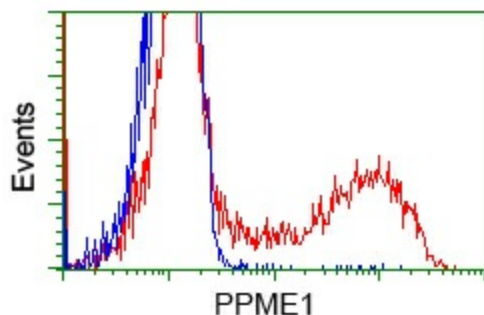
## Product images:



HEK293T cells were transfected with the pCMV6-ENTRY control (Left lane) or pCMV6-ENTRY PPME1 ([RC200009], Right lane) cDNA for 48 hrs and lysed. Equivalent amounts of cell lysates (5 ug per lane) were separated by SDS-PAGE and immunoblotted with anti-PPME1. Positive lysates [LY402509] (100ug) and [LC402509] (20ug) can be purchased separately from OriGene.



Anti-PPME1 mouse monoclonal antibody ([TA500822]) immunofluorescent staining of COS7 cells transiently transfected by pCMV6-ENTRY PPME1 ([RC200009]).



HEK293T cells transfected with either pCMV6-ENTRY PPME1 ([RC200009]) (Red) or empty vector control plasmid (Blue) were immunostained with anti-PPME1 mouse monoclonal ([TA500822]), and then analyzed by flow cytometry.