

Product datasheet for **TA500820AM**

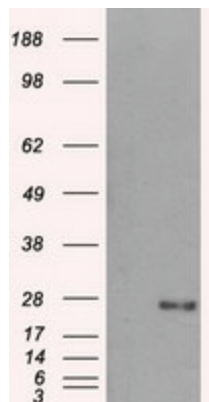
DCXR Mouse Monoclonal Antibody (Biotin conjugated) [Clone ID: OTI4D11]

Product data:

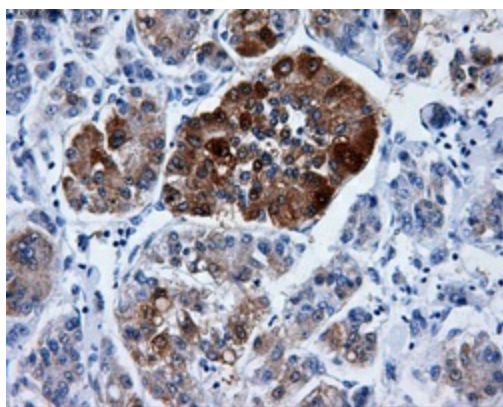
Product Type:	Primary Antibodies
Clone Name:	OTI4D11
Applications:	FC, IF, IHC, WB
Recommended Dilution:	WB 1:500, IHC 1:50, IF 1:100, Flow 1:100
Reactivity:	Human
Host:	Mouse
Isotype:	IgG1
Clonality:	Monoclonal
Immunogen:	Full length human recombinant protein of human DCXR (NP_057370) produced in HEK293T cell.
Formulation:	PBS (pH 7.3) containing 1% BSA, 50% glycerol and 0.02% sodium azide.
Concentration:	0.5 mg/ml
Purification:	Purified from mouse ascites fluids or tissue culture supernatant by affinity chromatography (protein A/G)
Conjugation:	Biotin
Storage:	Store at -20°C as received.
Stability:	Stable for 12 months from date of receipt.
Predicted Protein Size:	25.9 kDa
Gene Name:	dicarbonyl and L-xylulose reductase
Database Link:	NP_057370 Entrez Gene 51181 Human Q7Z4W1
Background:	DCXR is an enzyme that has both diacetyl reductase (EC 1.1.1.5) and L-xylulose reductase (EC 1.1.1.10) activities
Synonyms:	DCR; HCR2; HCRII; KIDCR; P34H; PNTSU; SDR20C1; XR
Protein Families:	Druggable Genome
Protein Pathways:	Metabolic pathways, Pentose and glucuronate interconversions



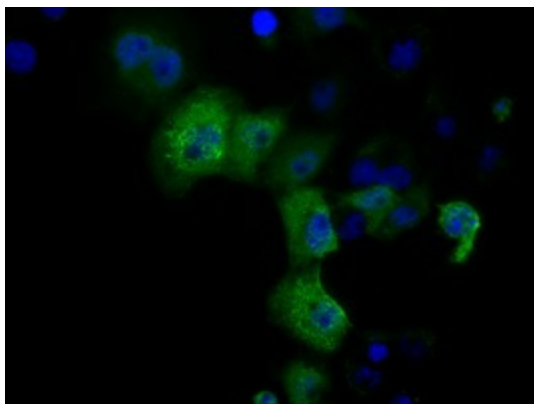
[View online »](#)

Product images:

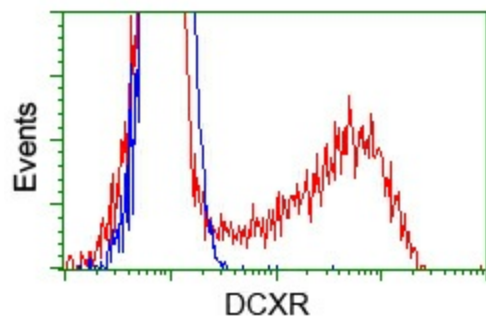
HEK293T cells were transfected with the pCMV6-ENTRY control (Cat# [PS100001], Left lane) or pCMV6-ENTRY DCXR (Cat# [RC200023], Right lane) cDNA for 48 hrs and lysed. Equivalent amounts of cell lysates (5 ug per lane) were separated by SDS-PAGE and immunoblotted with anti-DCXR antibody (Cat# [TA500820]). Positive lysates [LY402535] (100ug) and [LC402535] (20ug) can be purchased separately from OriGene.



Immunohistochemical staining of paraffin-embedded Carcinoma of liver tissue using anti-DCXR mouse monoclonal antibody. (Heat-induced epitope retrieval by 10mM citric buffer, pH6.0, 100°C for 10min, [TA500820], Dilution 1:50)



Anti-DCXR mouse monoclonal antibody ([TA500820]) immunofluorescent staining of COS7 cells transiently transfected by pCMV6-ENTRY DCXR ([RC200023]).



HEK293T cells transfected with either pCMV6-ENTRY DCXR ([RC200023]) (Red) or empty vector control plasmid (Blue) were immunostained with anti-DCXR mouse monoclonal ([TA500820]), and then analyzed by flow cytometry.