

Product datasheet for TA500815M

MAN1 (LEMD3) Mouse Monoclonal Antibody [Clone ID: OTI3C8]

Product data:

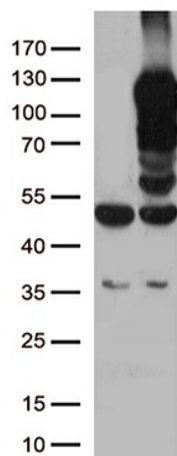
Product Type:	Primary Antibodies
Clone Name:	OTI3C8
Applications:	WB
Recommended Dilution:	WB 1:500~2000, FLOW 1:100
Reactivity:	Human, Monkey, Mouse, Rat
Host:	Mouse
Isotype:	IgG2b
Clonality:	Monoclonal
Immunogen:	Full length human recombinant protein of human LEMD3 (NP_055134) produced in HEK293T cell.
Formulation:	PBS (pH 7.3) containing 1% BSA, 50% glycerol and 0.02% sodium azide.
Concentration:	0.83 mg/ml
Purification:	Purified from mouse ascites fluids or tissue culture supernatant by affinity chromatography (protein A/G)
Conjugation:	Unconjugated
Storage:	Store at -20°C as received.
Stability:	Stable for 12 months from date of receipt.
Predicted Protein Size:	99.8 kDa
Gene Name:	LEM domain containing 3
Database Link:	NP_055134 Entrez Gene 380664 Mouse Entrez Gene 680066 Rat Entrez Gene 717597 Monkey Entrez Gene 23592 Human Q9Y2U8
Background:	This locus encodes a LEM domain-containing protein. The encoded protein functions to antagonize transforming growth factor-beta signaling at the inner nuclear membrane. Two transcript variants encoding different isoforms have been found for this gene. Mutations in this gene have been associated with osteopoikilosis, Buschke-Ollendorff syndrome and melorheostosis.


[View online »](#)

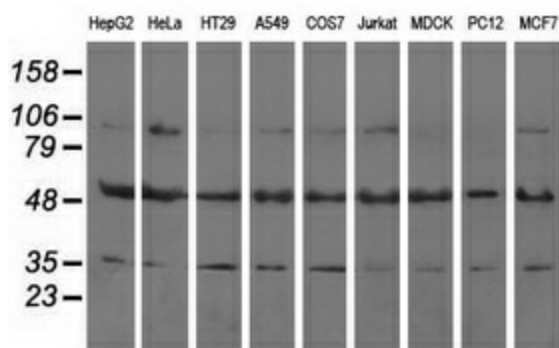
Synonyms: MAN1

Protein Families: Transmembrane

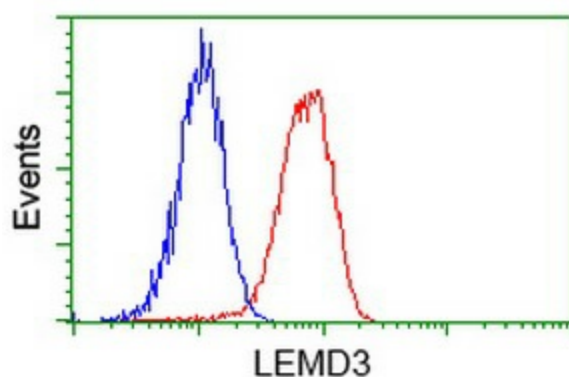
Product images:



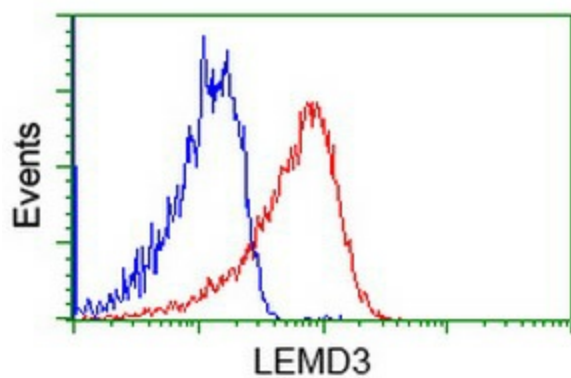
HEK293T cells were transfected with the pCMV6-ENTRY control (Left lane) or pCMV6-ENTRY LEMD3 [RC212759], Right lane) cDNA for 48 hrs and lysed. Equivalent amounts of cell lysates (5 ug per lane) were separated by SDS-PAGE and immunoblotted with anti-LEMD3. Positive lysates [LY402311] (100ug) and [LC402311] (20ug) can be purchased separately from OriGene.



Western blot analysis of extracts (35ug) from 9 different cell lines by using anti-LEMD3 monoclonal antibody.



Flow cytometric Analysis of HeLa cells, using anti-LEMD3 antibody [TA500815J], (Red), compared to a nonspecific negative control antibody (TA50011), (Blue).



Flow cytometric Analysis of Jurkat cells, using anti-LEMD3 antibody ([TA500815]), (Red), compared to a nonspecific negative control antibody (TA50011), (Blue).