

## Product datasheet for **TA500815BM**

### MAN1 (LEMD3) Mouse Monoclonal Antibody (HRP conjugated) [Clone ID: OTI3C8]

#### Product data:

|                         |   |
|-------------------------|---|
| Product Type:           | Primary Antibodies  |
| Clone Name:             | OTI3C8  |
| Applications:           | WB  |
| Recommended Dilution:   | WB 1:500~2000, FLOW 1:100   |
| Reactivity:             | Human, Monkey, Mouse, Rat   |
| Host:                   | Mouse   |
| Isotype:                | IgG2b   |
| Clonality:              | Monoclonal  |
| Immunogen:              | Full length human recombinant protein of human LEMD3 (NP_055134) produced in HEK293T cell.  |
| Formulation:            | PBS (pH 7.3) containing 1% BSA, 50% glycerol.   |
| Concentration:          | 0.5 mg/ml   |
| Purification:           | Purified from mouse ascites fluids or tissue culture supernatant by affinity chromatography (protein A/G)   |
| Conjugation:            | HRP   |
| Storage:                | Store at -20°C as received.   |
| Stability:              | Stable for 12 months from date of receipt.  |
| Predicted Protein Size: | 99.8 kDa  |
| Gene Name:              | LEM domain containing 3   |
| Database Link:          | <a href="#">NP_055134</a><br><a href="#">Entrez Gene 380664</a> <a href="#">MouseEntrez Gene 680066</a> <a href="#">RatEntrez Gene 717597</a> <a href="#">MonkeyEntrez Gene 23592</a> <a href="#">Human Q9Y2U8</a>  |
| Background:             | This locus encodes a LEM domain-containing protein. The encoded protein functions to antagonize transforming growth factor-beta signaling at the inner nuclear membrane. Two transcript variants encoding different isoforms have been found for this gene. Mutations in this gene have been associated with osteopoikilosis, Buschke-Ollendorff syndrome and melorheostosis. |

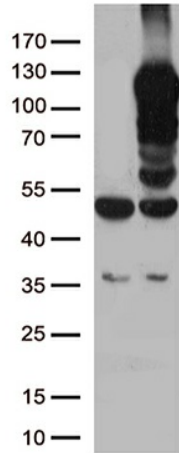


[View online »](#)

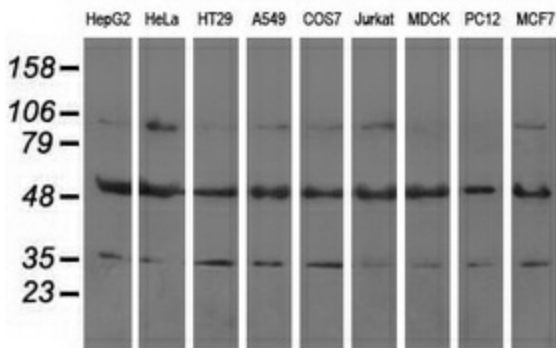
**Synonyms:** MAN1

**Protein Families:** Transmembrane

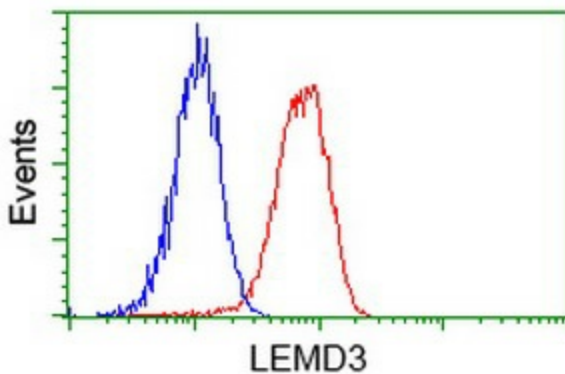
**Product images:**



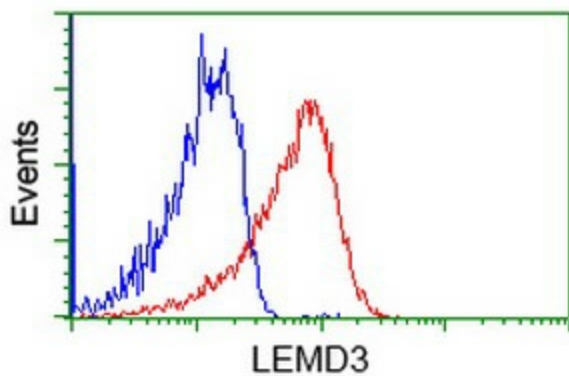
HEK293T cells were transfected with the pCMV6-ENTRY control (Left lane) or pCMV6-ENTRY LEMD3 [RC212759], Right lane) cDNA for 48 hrs and lysed. Equivalent amounts of cell lysates (5 ug per lane) were separated by SDS-PAGE and immunoblotted with anti-LEMD3. Positive lysates [LY402311] (100ug) and [LC402311] (20ug) can be purchased separately from OriGene.



Western blot analysis of extracts (35ug) from 9 different cell lines by using anti-LEMD3 monoclonal antibody.



Flow cytometric Analysis of HeLa cells, using anti-LEMD3 antibody [TA500815], (Red), compared to a nonspecific negative control antibody (TA50011), (Blue).



Flow cytometric Analysis of Jurkat cells, using anti-LEMD3 antibody ([TA500815]), (Red), compared to a nonspecific negative control antibody (TA50011), (Blue).