

## Product datasheet for **TA500814S**

### **AKT2 Mouse Monoclonal Antibody [Clone ID: OTI4H7]**

#### **Product data:**

<b>Product Type:</b>	Primary Antibodies
<b>Clone Name:</b>	OTI4H7
<b>Applications:</b>	FC, IF, IHC, WB
<b>Recommended Dilution:</b>	WB 1:1000, IHC 1:50, IF 1:50~100, FLOW 1:100
<b>Reactivity:</b>	Human, Mouse, Rat
<b>Host:</b>	Mouse
<b>Isotype:</b>	IgG1
<b>Clonality:</b>	Monoclonal
<b>Immunogen:</b>	Full length human recombinant protein of human AKT2 (NP_001617) produced in HEK293T cell.
<b>Formulation:</b>	PBS (pH 7.3) containing 1% BSA, 50% glycerol and 0.02% sodium azide.
<b>Concentration:</b>	0.56 mg/ml
<b>Purification:</b>	Purified from mouse ascites fluids or tissue culture supernatant by affinity chromatography (protein A/G)
<b>Conjugation:</b>	Unconjugated
<b>Storage:</b>	Store at -20°C as received.
<b>Stability:</b>	Stable for 12 months from date of receipt.
<b>Predicted Protein Size:</b>	55.6 kDa
<b>Gene Name:</b>	AKT serine/threonine kinase 2
<b>Database Link:</b>	<a href="#">NP_001617</a> <a href="#">Entrez Gene 11652 Mouse</a> <a href="#">Entrez Gene 25233 Rat</a> <a href="#">Entrez Gene 208 Human</a> <a href="#">P31751</a>

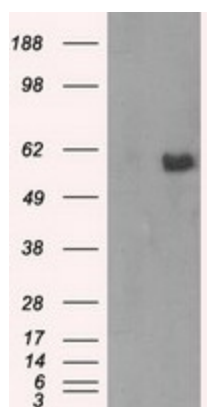
**Background:** This gene is a putative oncogene encoding a protein belonging to a subfamily of serine/threonine kinases containing SH2-like (Src homology 2-like) domains. The gene was shown to be amplified and overexpressed in 2 of 8 ovarian carcinoma cell lines and 2 of 15 primary ovarian tumors. Overexpression contributes to the malignant phenotype of a subset of human ductal pancreatic cancers. The encoded protein is a general protein kinase capable of phosphorylating several known proteins. [provided by RefSeq]



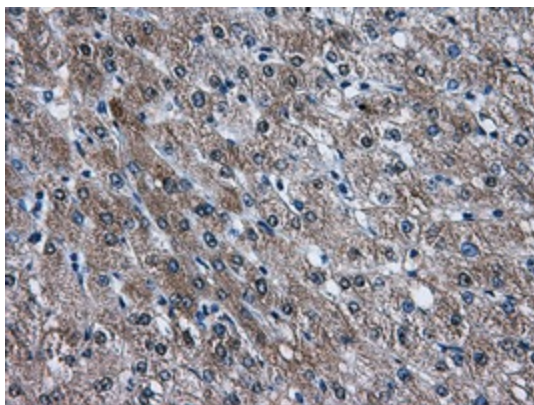
[View online »](#)

<b>Synonyms:</b>	HIHGHH; PKBB; PKBBETA; PRKBB; RAC-BETA
<b>Protein Families:</b>	Druggable Genome, ES Cell Differentiation/IPS, Protein Kinase
<b>Protein Pathways:</b>	Acute myeloid leukemia, Adipocytokine signaling pathway, Apoptosis, B cell receptor signaling pathway, Chemokine signaling pathway, Chronic myeloid leukemia, Colorectal cancer, Endometrial cancer, ErbB signaling pathway, Fc epsilon RI signaling pathway, Fc gamma R-mediated phagocytosis, Focal adhesion, Glioma, Insulin signaling pathway, Jak-STAT signaling pathway, MAPK signaling pathway, Melanoma, mTOR signaling pathway, Neurotrophin signaling pathway, Non-small cell lung cancer, Pancreatic cancer, Pathways in cancer, Progesterone-mediated oocyte maturation, Prostate cancer, Renal cell carcinoma, Small cell lung cancer, T cell receptor signaling pathway, Tight junction, Toll-like receptor signaling pathway, VEGF signaling pathway

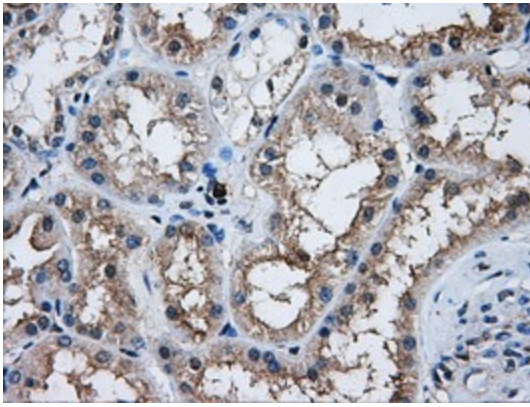
### Product images:



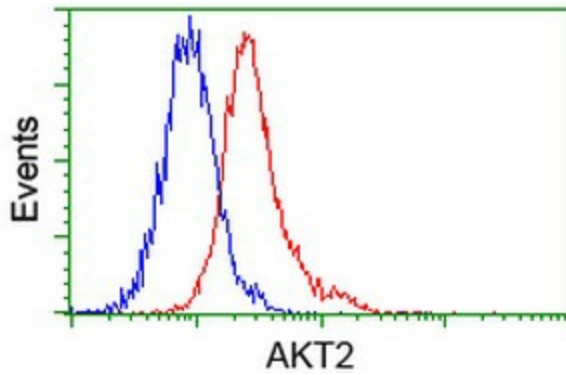
HEK293T cells were transfected with the pCMV6-ENTRY control (Cat# [PS100001], Left lane) or pCMV6-ENTRY AKT2 (Cat# [RC217733], Right lane) cDNA for 48 hrs and lysed. Equivalent amounts of cell lysates (5 ug per lane) were separated by SDS-PAGE and immunoblotted with anti-AKT2 (Cat# [TA500814]). Positive lysates [LY419836] (100ug) and [LC419836] (20ug) can be purchased separately from OriGene.



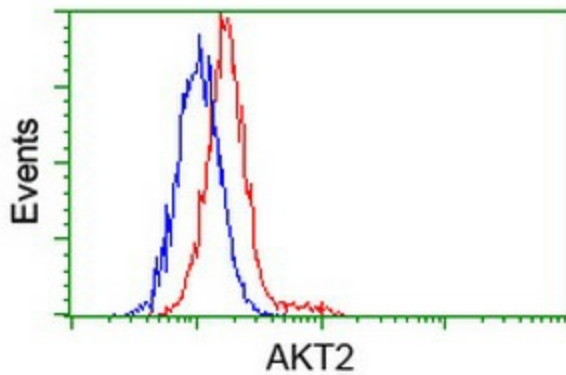
Immunohistochemical staining of paraffin-embedded Human liver tissue within the normal limits using anti-AKT2 mouse monoclonal antibody. (Heat-induced epitope retrieval by 10mM citric buffer, pH6.0, 100°C for 10min, [TA500814])



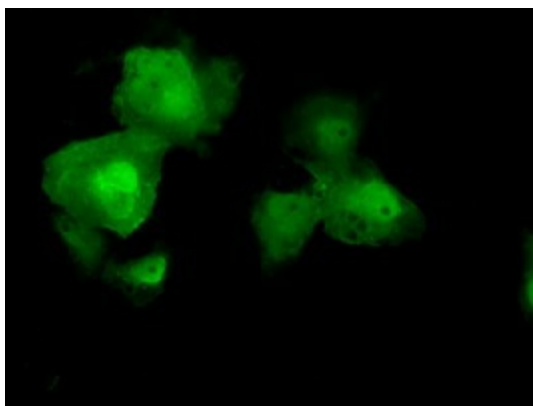
Immunohistochemical staining of paraffin-embedded Human Kidney tissue within the normal limits using anti-AKT2 mouse monoclonal antibody. (Heat-induced epitope retrieval by 10mM citric buffer, pH6.0, 100°C for 10min, [TA500814])



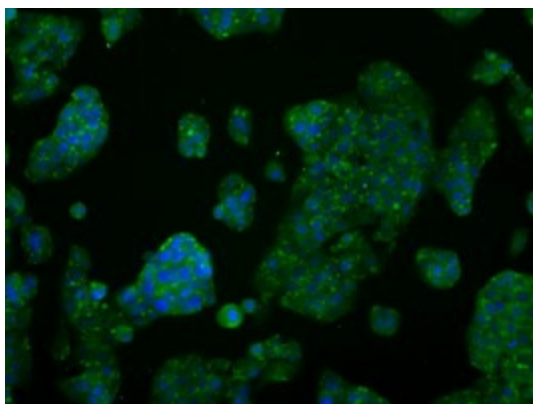
Flow cytometric Analysis of Jurkat cells, using anti-AKT2 antibody ([TA500814]), (Red), compared to a nonspecific negative control antibody, (Blue).



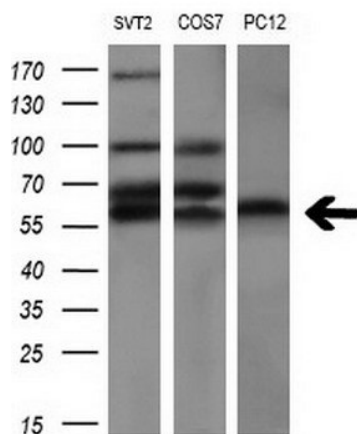
Flow cytometric Analysis of HeLa cells, using anti-AKT2 antibody ([TA500814]), (Red), compared to a nonspecific negative control antibody, (Blue).



Anti-AKT2 mouse monoclonal antibody ([TA500814]) immunofluorescent staining of COS7 cells transiently transfected by pCMV6-ENTRY AKT2 ([RC217733]).



Immunofluorescent staining of HepG2 cells using anti-AKT2 mouse monoclonal antibody ([TA500814]).



Western blot analysis of extracts (10ug) from 3 different cell lines by using anti-AKT2 monoclonal antibody at 1:200 dilution.