

Product datasheet for **TA500813AM**

ERAB (HSD17B10) Mouse Monoclonal Antibody (Biotin conjugated) [Clone ID: OTI5E2]

Product data:

Product Type:	Primary Antibodies
Clone Name:	OTI5E2
Applications:	FC, IF, IHC, WB
Recommended Dilution:	WB 1:2000, IHC 1:50, IF 1:100, Flow 1:100
Reactivity:	Human, Monkey, Mouse, Rat
Host:	Mouse
Isotype:	IgG2a
Clonality:	Monoclonal
Immunogen:	Full length human recombinant protein of human HSD17B10 (NP_004484) produced in HEK293T cell.
Formulation:	PBS (pH 7.3) containing 1% BSA, 50% glycerol and 0.02% sodium azide.
Concentration:	0.5 mg/ml
Purification:	Purified from mouse ascites fluids or tissue culture supernatant by affinity chromatography (protein A/G)
Conjugation:	Biotin
Storage:	Store at -20°C as received.
Stability:	Stable for 12 months from date of receipt.
Predicted Protein Size:	26.9 kDa
Gene Name:	hydroxysteroid 17-beta dehydrogenase 10
Database Link:	NP_004484 Entrez Gene 15108 Mouse Entrez Gene 63864 Rat Entrez Gene 700018 Monkey Entrez Gene 3028 Human Q99714



[View online »](#)

Background:

This gene encodes 3-hydroxyacyl-CoA dehydrogenase type II, a member of the short-chain dehydrogenase/reductase superfamily. The gene product is a mitochondrial protein that catalyzes the oxidation of a wide variety of fatty acids, alcohols, and steroids. The protein has been implicated in the development of Alzheimer's disease, and mutations in the gene are the cause of 2-methyl-3-hydroxybutyryl-CoA dehydrogenase deficiency (MHBD). Several alternatively spliced transcript variants have been identified, but the full-length nature of only two transcript variants has been determined.

Synonyms:

17b-HSD10; ABAD; CAMR; DUPXP11.22; ERAB; HADH2; HCD2; MHBD; MRPP2; MRX17; MRX31; MRXS10; SCHAD

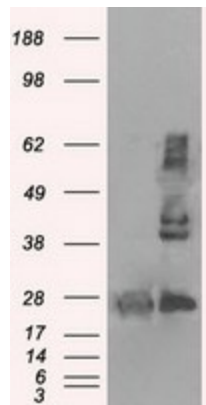
Protein Families:

Druggable Genome

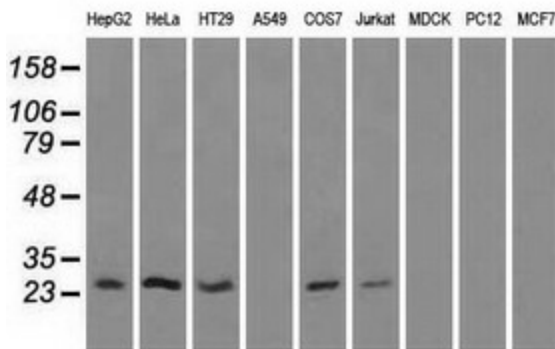
Protein Pathways:

Alzheimer's disease, Metabolic pathways, Valine, leucine and isoleucine degradation

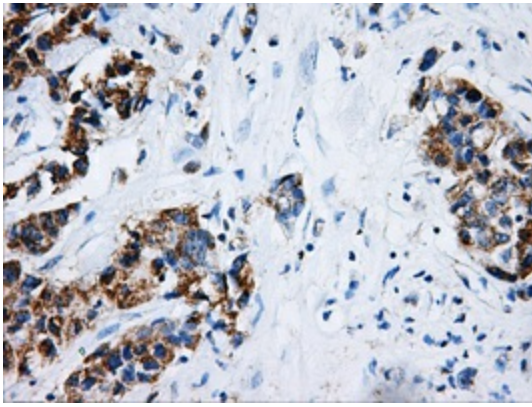
Product images:



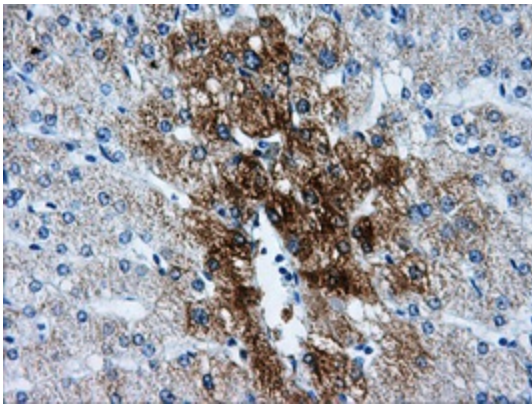
HEK293T cells were transfected with the pCMV6-ENTRY control (Left lane) or pCMV6-ENTRY HSD17B10 ([RC201734], Right lane) cDNA for 48 hrs and lysed. Equivalent amounts of cell lysates (5 ug per lane) were separated by SDS-PAGE and immunoblotted with anti-HSD17B10. Positive lysates [LY401426] (100ug) and [LC401426] (20ug) can be purchased separately from OriGene.



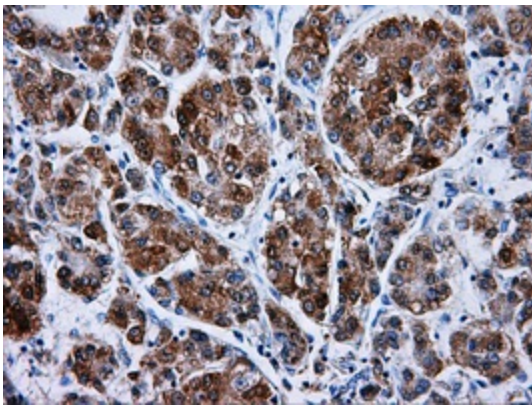
Western blot analysis of extracts (35ug) from 9 different cell lines by using anti-HSD17B10 monoclonal antibody.



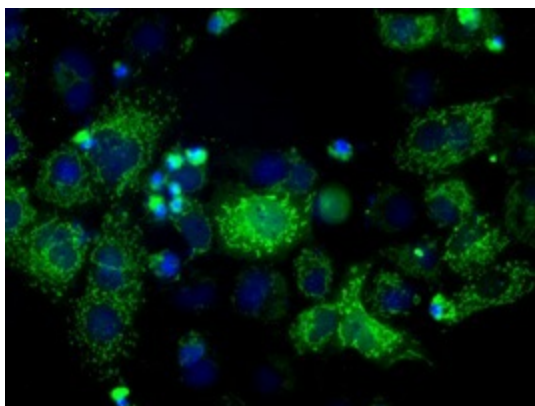
Immunohistochemical staining of paraffin-embedded Adenocarcinoma of breast tissue using anti-HSD17B10 mouse monoclonal antibody. (Heat-induced epitope retrieval by 10mM citric buffer, pH6.0, 100°C for 10min, [TA500813], Dilution 1:50)



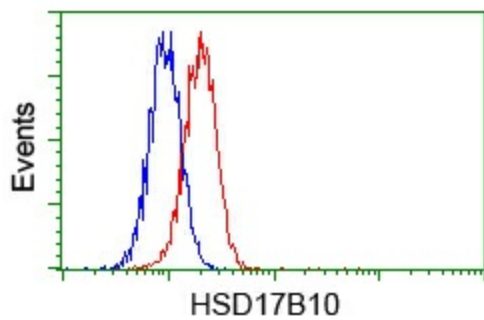
Immunohistochemical staining of paraffin-embedded liver tissue within the normal limits using anti-HSD17B10 mouse monoclonal antibody. (Heat-induced epitope retrieval by 10mM citric buffer, pH6.0, 100°C for 10min, [TA500813], Dilution 1:50)



Immunohistochemical staining of paraffin-embedded Carcinoma of liver tissue using anti-HSD17B10 mouse monoclonal antibody. (Heat-induced epitope retrieval by 10mM citric buffer, pH6.0, 100°C for 10min, [TA500813], Dilution 1:50)



Anti-HSD17B10 mouse monoclonal antibody ([TA500813]) immunofluorescent staining of COS7 cells transiently transfected by pCMV6-ENTRY HSD17B10 ([RC201734]).



Flow cytometric analysis of Hela cells, using anti-HSD17B10 antibody ([TA500813]), (Red) compared to a nonspecific negative control antibody (TA50011) (Blue).