

Product datasheet for **TA500811**

ID3 Mouse Monoclonal Antibody [Clone ID: OTI7B6]

Product data:

Product Type:	Primary Antibodies
Clone Name:	OTI7B6
Applications:	IF, IHC, WB
Recommended Dilution:	WB 1:2000, IHC 1:50, IF 1:100
Reactivity:	Human, Mouse, Rat
Host:	Mouse
Isotype:	IgG1
Clonality:	Monoclonal
Immunogen:	Full length human recombinant protein of human ID3 (NP_002158) produced in HEK293T cell.
Formulation:	PBS (pH 7.3) containing 1% BSA, 50% glycerol and 0.02% sodium azide.
Concentration:	0.75 mg/ml
Purification:	Purified from mouse ascites fluids or tissue culture supernatant by affinity chromatography (protein A/G)
Conjugation:	Unconjugated
Storage:	Store at -20°C as received.
Stability:	Stable for 12 months from date of receipt.
Predicted Protein Size:	13.0 kDa
Gene Name:	inhibitor of DNA binding 3, HLH protein
Database Link:	NP_002158 Entrez Gene 3399 Human Q02535



[View online »](#)

Background:

This gene encodes a protein belonging to the raf/mil family of serine/threonine protein kinases. This protein plays a role in regulating the MAP kinase/ERKs signaling pathway, which affects cell division, differentiation, and secretion. Mutations in this gene are associated with cardiofaciocutaneous syndrome, a disease characterized by heart defects, mental retardation and a distinctive facial appearance. Mutations in this gene have also been associated with various cancers, including non-Hodgkin lymphoma, colorectal cancer, malignant melanoma, thyroid carcinoma, non-small cell lung carcinoma, and adenocarcinoma of lung. A pseudogene, which is located on chromosome X, has been identified for this gene.

Synonyms:

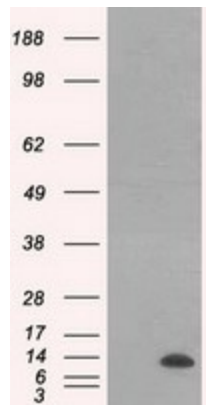
bHLHb25; HEIR-1

Protein Families:

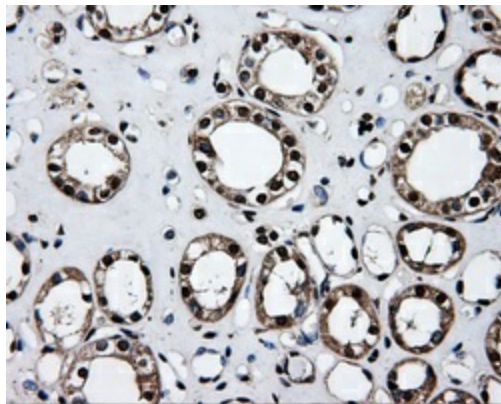
Druggable Genome, ES Cell Differentiation/IPS, Transcription Factors

Protein Pathways:

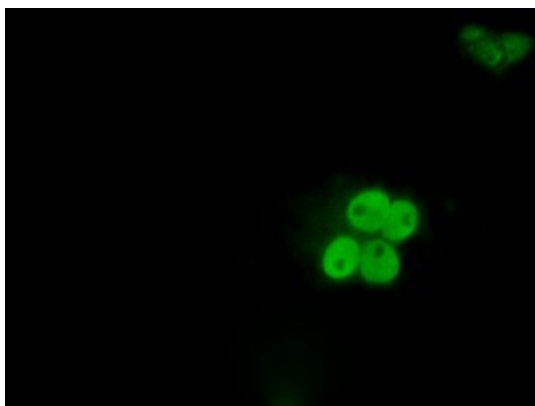
TGF-beta signaling pathway

Product images:


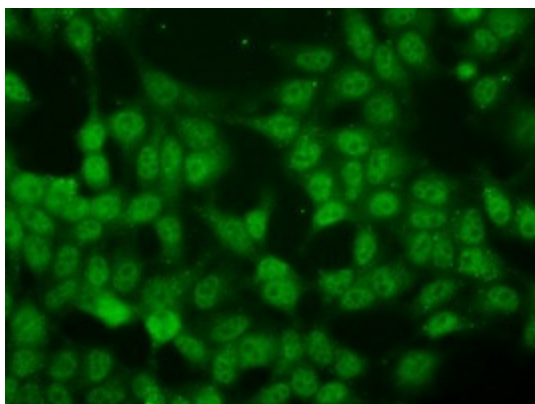
HEK293T cells were transfected with the pCMV6-ENTRY control (Left lane) or pCMV6-ENTRY ID3 ([RC200583], Right lane) cDNA for 48 hrs and lysed. Equivalent amounts of cell lysates (5 ug per lane) were separated by SDS-PAGE and immunoblotted with anti-ID3. Positive lysates [LY419492] (100ug) and [LC419492] (20ug) can be purchased separately from OriGene.



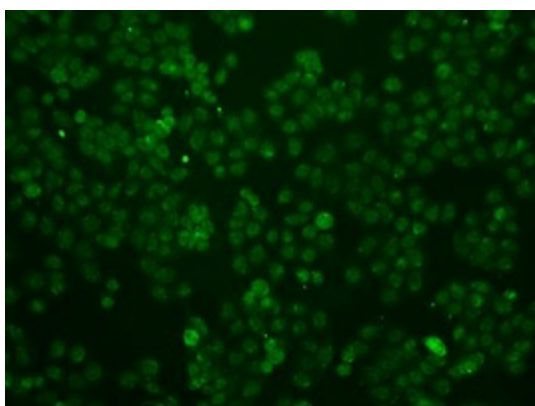
Immunohistochemical staining of paraffin-embedded Kidney tissue within the normal limits using anti-ID3mouse monoclonal antibody. (Heat-induced epitope retrieval by 10mM citric buffer, pH6.0, 100°C for 10min, TA500811, Dilution 1:50)



Anti-ID3 mouse monoclonal antibody (TA500811) immunofluorescent staining of COS7 cells transiently transfected by pCMV6-ENTRY ID3 ([RC200583]).



Immunofluorescent staining of HeLa cells using anti-ID3 mouse monoclonal antibody (TA500811).



Immunofluorescent staining of HT29 cells using anti-ID3 mouse monoclonal antibody (TA500811).