

## Product datasheet for **TA500809BM**

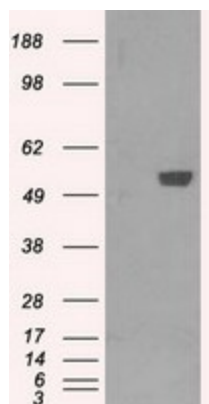
### PFKFB4 Mouse Monoclonal Antibody (HRP conjugated) [Clone ID: OTI1C8]

#### Product data:

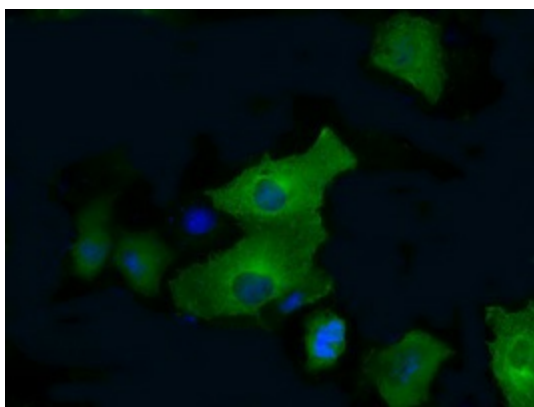
Product Type:	Primary Antibodies
Clone Name:	OTI1C8
Applications:	IF, WB
Recommended Dilution:	WB 1:2000, IF 1:100
Reactivity:	Human, Mouse, Rat
Host:	Mouse
Isotype:	IgG2a
Clonality:	Monoclonal
Immunogen:	Full length human recombinant protein of human PFKFB4 (NP_004558) produced in HEK293T cell.
Formulation:	PBS (pH 7.3) containing 1% BSA, 50% glycerol.
Concentration:	0.5 mg/ml
Purification:	Purified from mouse ascites fluids or tissue culture supernatant by affinity chromatography (protein A/G)
Conjugation:	HRP
Storage:	Store at -20°C as received.
Stability:	Stable for 12 months from date of receipt.
Predicted Protein Size:	54.0 kDa
Gene Name:	6-phosphofructo-2-kinase/fructose-2,6-biphosphatase 4
Database Link:	<a href="#">NP_004558</a> <a href="#">Entrez Gene 54283 Rat</a> <a href="#">Entrez Gene 270198 Mouse</a> <a href="#">Entrez Gene 5210 Human</a> <a href="#">Q16877</a>
Background:	Synthesis and degradation of fructose 2,6-bisphosphate
Synonyms:	6-biphosphatase-4; 6-biphosphatase 4; 6-phosphofructo-2-kinase; bifunctional enzyme with kinase and biphosphatase activities; fructose-2
Protein Families:	Druggable Genome
Protein Pathways:	Fructose and mannose metabolism



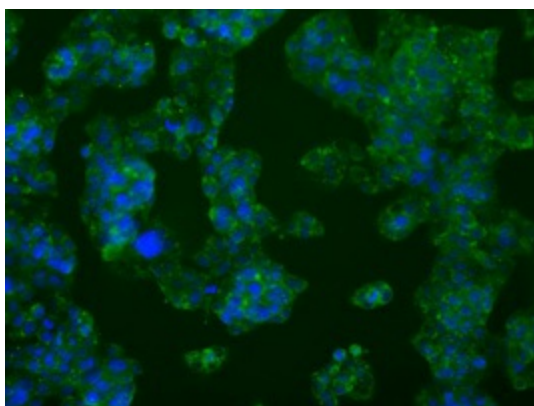
[View online »](#)

**Product images:**

HEK293T cells were transfected with the pCMV6-ENTRY control (Cat# [PS100001], Left lane) or pCMV6-ENTRY PFKFB4 (Cat# [RC201573], Right lane) cDNA for 48 hrs and lysed. Equivalent amounts of cell lysates (5 ug per lane) were separated by SDS-PAGE and immunoblotted with anti-PFKFB4 (Cat# [TA500809]). Positive lysates [LY401448] (100ug) and [LC401448] (20ug) can be purchased separately from OriGene.



Anti-PFKFB4 mouse monoclonal antibody ([TA500809]) immunofluorescent staining of COS7 cells transiently transfected by pCMV6-ENTRY PFKFB4 ([RC201573]).



Immunofluorescent staining of HepG2 cells using anti-PFKFB4 mouse monoclonal antibody ([TA500809]).