

Product datasheet for **TA500797M**

MAN1 (LEMD3) Mouse Monoclonal Antibody [Clone ID: OTI4E1]

Product data:

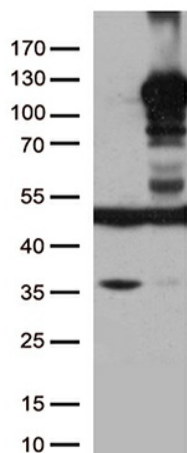
Product Type:	Primary Antibodies
Clone Name:	OTI4E1
Applications:	IP, WB
Recommended Dilution:	WB 1:1000, IF 1:100, Flow 1:100, IP 2-4ug/mg
Reactivity:	Human, Mouse, Rat
Host:	Mouse
Isotype:	IgG2b
Clonality:	Monoclonal
Immunogen:	Full length human recombinant protein of human LEMD3 (NP_055134) produced in HEK293T cell.
Formulation:	PBS (pH 7.3) containing 1% BSA, 50% glycerol and 0.02% sodium azide.
Concentration:	1 mg/ml
Purification:	Purified from mouse ascites fluids or tissue culture supernatant by affinity chromatography (protein A/G)
Conjugation:	Unconjugated
Storage:	Store at -20°C as received.
Stability:	Stable for 12 months from date of receipt.
Predicted Protein Size:	100.0 kDa
Gene Name:	LEM domain containing 3
Database Link:	NP_055134 Entrez Gene 380664 Mouse Entrez Gene 680066 Rat Entrez Gene 23592 Human Q9Y2U8
Background:	This locus encodes a LEM domain-containing protein. The encoded protein functions to antagonize transforming growth factor-beta signaling at the inner nuclear membrane. Two transcript variants encoding different isoforms have been found for this gene. Mutations in this gene have been associated with osteopoikilosis, Buschke-Ollendorff syndrome and melorheostosis


[View online »](#)

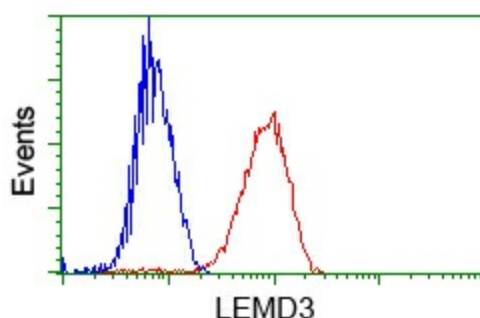
Synonyms: MAN1

Protein Families: Transmembrane

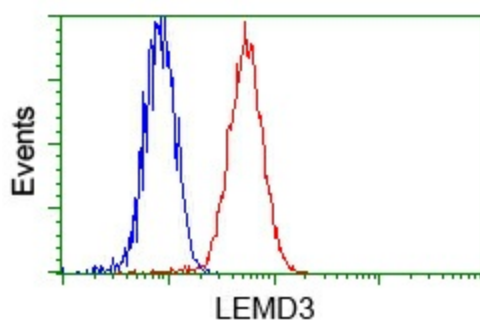
Product images:



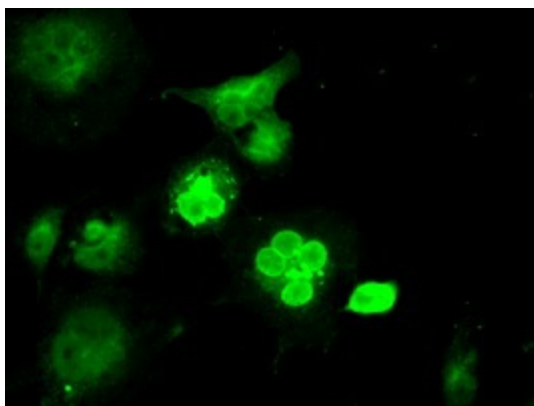
HEK293T cells were transfected with the pCMV6-ENTRY control (Cat# [PS100001], Left lane) or pCMV6-ENTRY LEMD3 (Cat# [RC212759], Right lane) cDNA for 48 hrs and lysed. Equivalent amounts of cell lysates (5 ug per lane) were separated by SDS-PAGE and immunoblotted with anti-LEMD3 (Cat# [TA500797]). Positive lysates [LY402311] (100ug) and [LC402311] (20ug) can be purchased separately from OriGene.



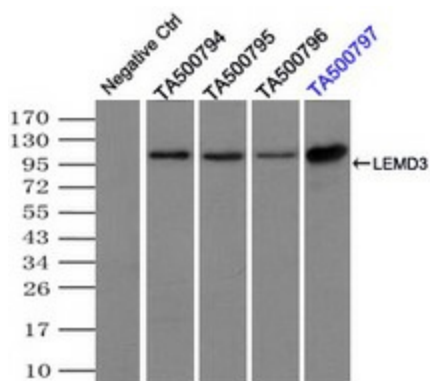
Flow cytometric analysis of Jurkat cells, using anti-LEMD3 antibody ([TA500797]), (Red) compared to a nonspecific negative control antibody (TA50011) (Blue).



Flow cytometric analysis of Hela cells, using anti-LEMD3 antibody ([TA500797]), (Red) compared to a nonspecific negative control antibody (TA50011) (Blue).



Anti-LEMD3 mouse monoclonal antibody ([TA500797]) immunofluorescent staining of COS7 cells transiently transfected by pCMV6-ENTRY LEMD3 ([RC212759]).



Immunoprecipitation of LEMD3 by using TrueMab monoclonal anti-LEMD3 antibody (Negative control: IP without adding anti-LEMD3 antibody). For each experiment, 500ul of DDK tagged LEMD3 overexpression lysates (at 1:5 dilution with HEK293T lysate), 2ug of anti-LEMD3 antibody and 20ul (0.1mg) of goat anti-mouse conjugated magnetic beads were mixed and incubated overnight. After extensive wash to remove any non-specific binding, the immunoprecipitated products were analyzed with rabbit anti-DDK polyclonal antibody.