

Product datasheet for **TA500788BM**

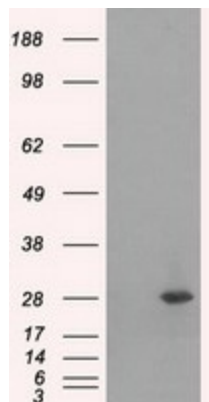
RPA34 (RPA2) Mouse Monoclonal Antibody (HRP conjugated) [Clone ID: OTI8B3]

Product data:

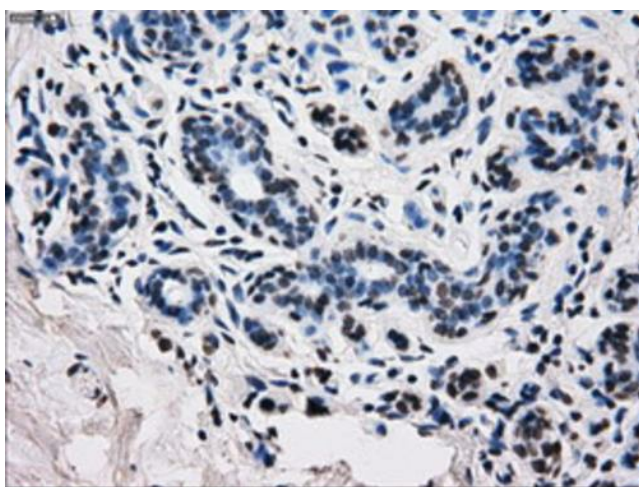
Product Type:	Primary Antibodies
Clone Name:	OTI8B3
Applications:	FC, IF, IHC, IP, WB
Recommended Dilution:	WB 1:4000, IHC 1:50, IF 1:50~100, FLOW 1:100, IP 2ug/500ul
Reactivity:	Human, Mouse, Rat
Host:	Mouse
Isotype:	IgG1
Clonality:	Monoclonal
Immunogen:	Full length human recombinant protein of human RPA2 (NP_002937) produced in HEK293T cell.
Formulation:	PBS (pH 7.3) containing 1% BSA, 50% glycerol.
Concentration:	0.5 mg/ml
Purification:	Purified from mouse ascites fluids or tissue culture supernatant by affinity chromatography (protein A/G)
Conjugation:	HRP
Storage:	Store at -20°C as received.
Stability:	Stable for 12 months from date of receipt.
Predicted Protein Size:	29.1 kDa
Gene Name:	replication protein A2
Database Link:	NP_002937 Entrez Gene 19891 Mouse Entrez Gene 59102 Rat Entrez Gene 6118 Human P15927
Synonyms:	REPA2; RP-A p32; RP-A p34; RPA32
Protein Families:	Druggable Genome, Stem cell - Pluripotency
Protein Pathways:	DNA replication, Homologous recombination, Mismatch repair, Nucleotide excision repair



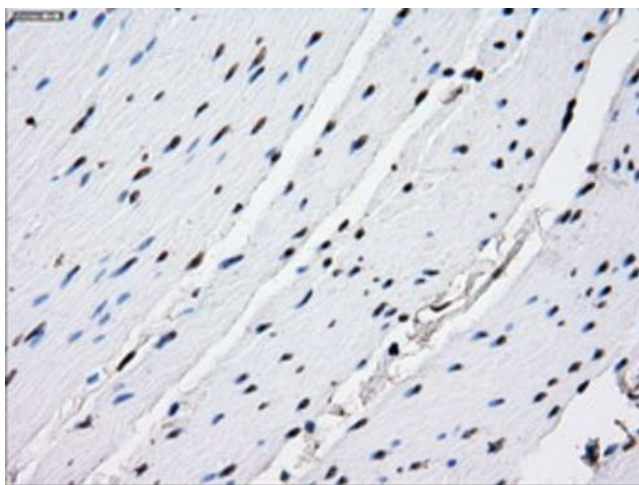
[View online »](#)

Product images:

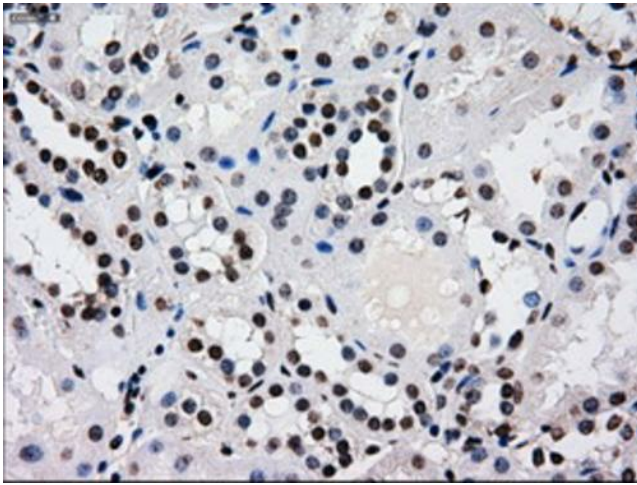
HEK293T cells were transfected with the pCMV6-ENTRY control (Left lane) or pCMV6-ENTRY RPA2 ([RC205715], Right lane) cDNA for 48 hrs and lysed. Equivalent amounts of cell lysates (5 ug per lane) were separated by SDS-PAGE and immunoblotted with anti-RPA2. Positive lysates [LY401031] (100ug) and [LC401031] (20ug) can be purchased separately from OriGene.



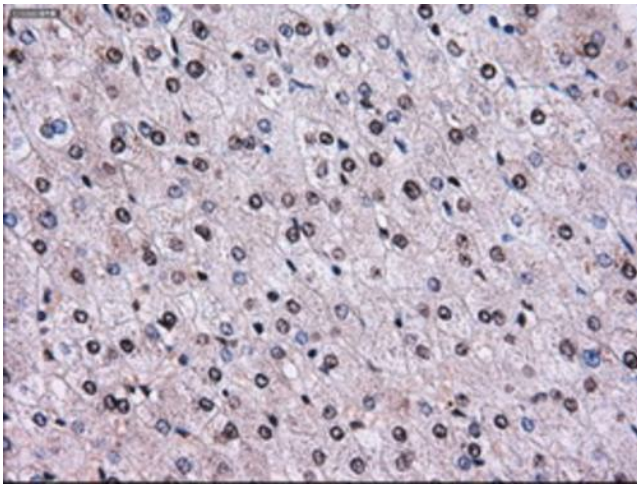
Immunohistochemical staining of paraffin-embedded Human breast tissue within the normal limits using anti-RPA2 mouse monoclonal antibody. Heat-induced epitope retrieval by EDTA solution buffer pH 8.0 at 120°C for 3 min.



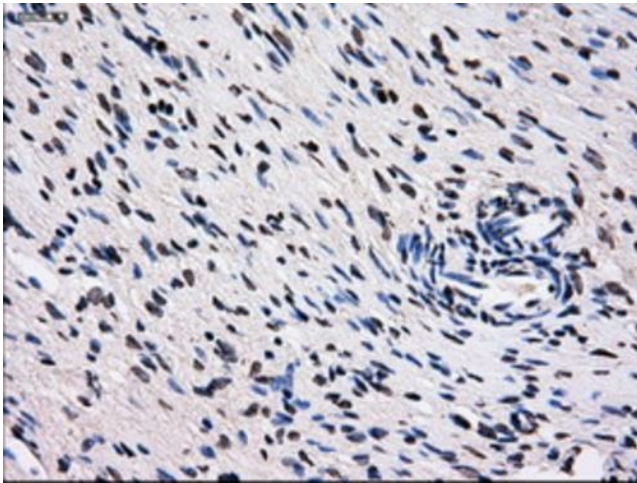
Immunohistochemical staining of paraffin-embedded Human colon tissue within the normal limits using anti-RPA2 mouse monoclonal antibody. Heat-induced epitope retrieval by EDTA solution buffer pH 8.0 at 120°C for 3 min.



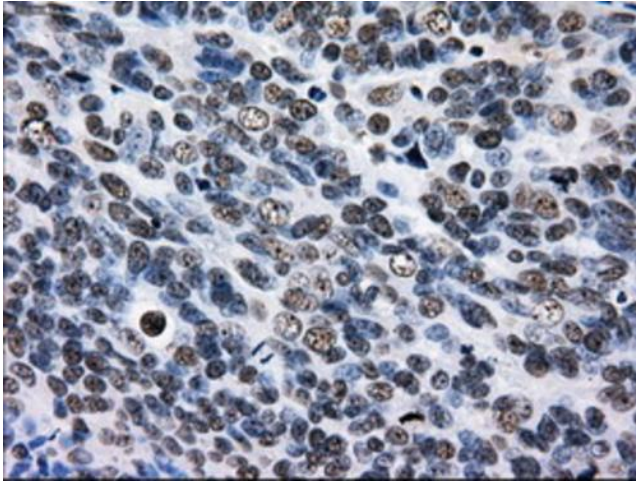
Immunohistochemical staining of paraffin-embedded Human Kidney tissue within the normal limits using anti-RPA2 mouse monoclonal antibody. Heat-induced epitope retrieval by EDTA solution buffer pH 8.0 at 120°C for 3 min.



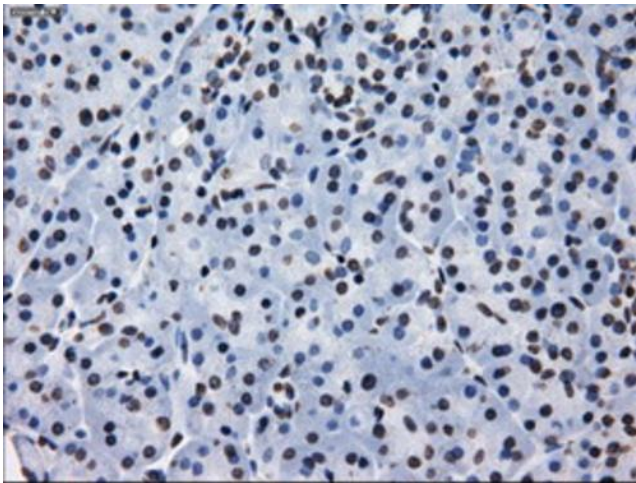
Immunohistochemical staining of paraffin-embedded Human liver tissue within the normal limits using anti-RPA2 mouse monoclonal antibody. Heat-induced epitope retrieval by EDTA solution buffer pH 8.0 at 120°C for 3 min.



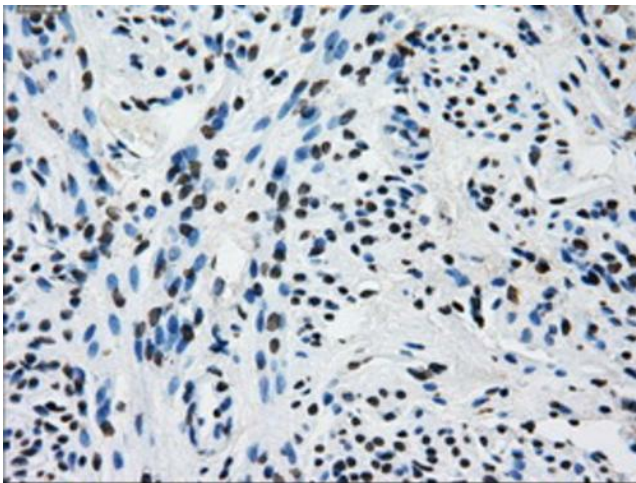
Immunohistochemical staining of paraffin-embedded Human Ovary tissue within the normal limits using anti-RPA2 mouse monoclonal antibody. Heat-induced epitope retrieval by EDTA solution buffer pH 8.0 at 120°C for 3 min.



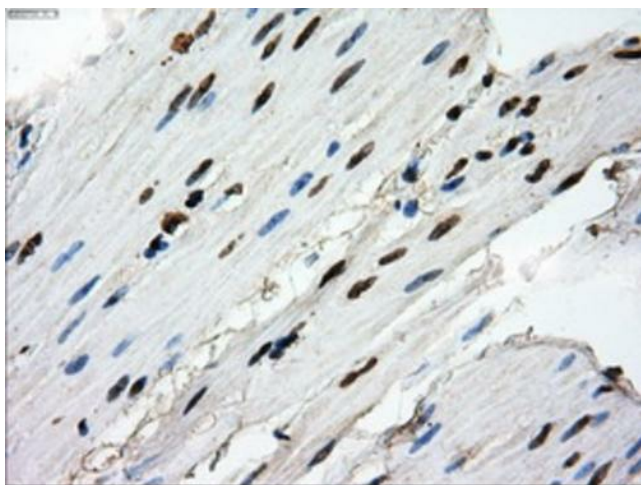
Immunohistochemical staining of paraffin-embedded Adenocarcinoma of Human ovary tissue using anti-RPA2 mouse monoclonal antibody. Heat-induced epitope retrieval by EDTA solution buffer pH 8.0 at 120°C for 3 min.



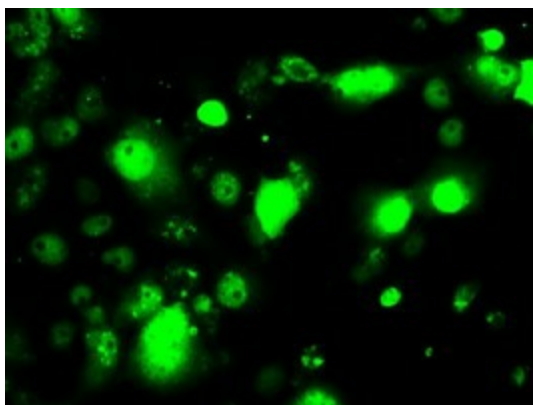
Immunohistochemical staining of paraffin-embedded Human pancreas tissue within the normal limits using anti-RPA2 mouse monoclonal antibody. Heat-induced epitope retrieval by EDTA solution buffer pH 8.0 at 120°C for 3 min.



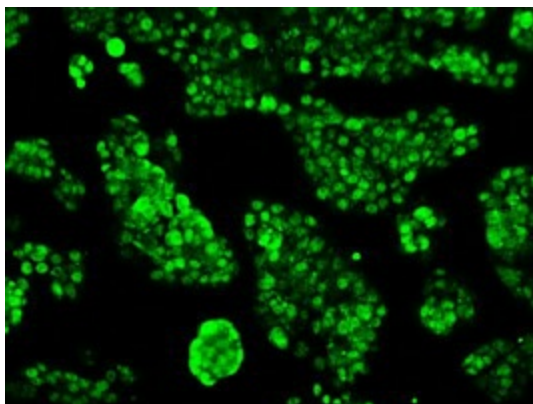
Immunohistochemical staining of paraffin-embedded Human endometrium tissue within the normal limits using anti-RPA2 mouse monoclonal antibody. Heat-induced epitope retrieval by EDTA solution buffer pH 8.0 at 120°C for 3 min.



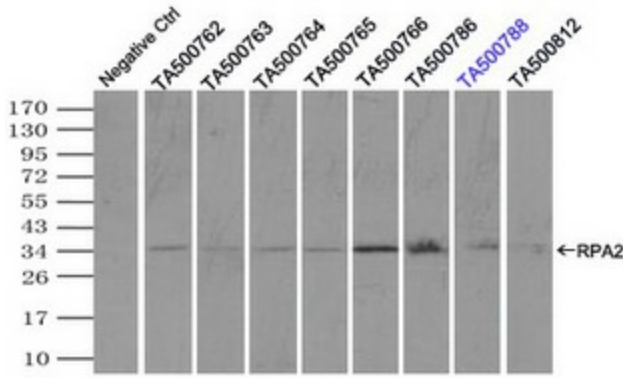
Immunohistochemical staining of paraffin-embedded Human bladder tissue within the normal limits using anti-RPA2 mouse monoclonal antibody. Heat-induced epitope retrieval by EDTA solution buffer pH 8.0 at 120°C for 3 min.



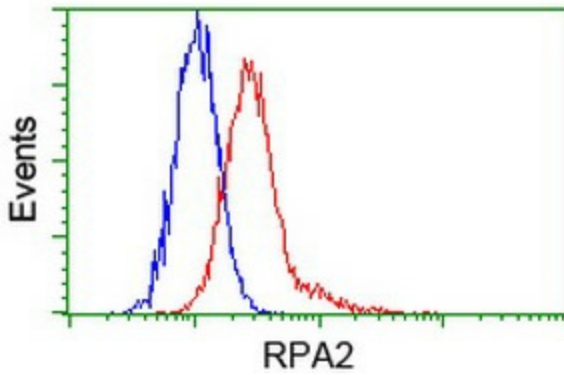
Anti-RPA2 mouse monoclonal antibody ([TA500788]) immunofluorescent staining of COS7 cells transiently transfected by pCMV6-ENTRY RPA2 ([RC205715]).



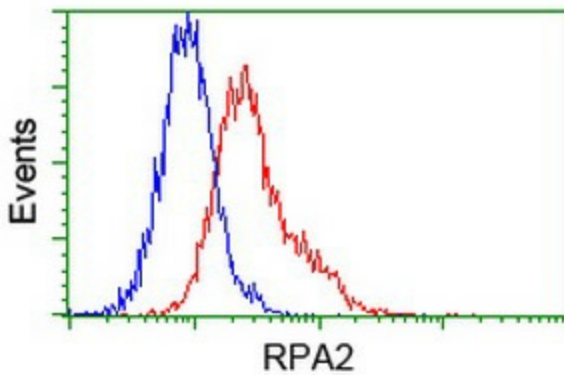
Immunofluorescent staining of HepG2 cells using anti-RPA2 mouse monoclonal antibody ([TA500788]).



Immunoprecipitation (IP) of RPA2 by using TrueMab monoclonal anti-RPA2 antibodies (Negative control: IP without adding anti-RPA2 antibody.). For each experiment, 500ul of DDK tagged RPA2 overexpression lysates (at 1:5 dilution with HEK293T lysate), 2ug of anti-RPA2 antibody and 20ul (0.1mg) of goat anti-mouse conjugated magnetic beads were mixed and incubated overnight. After extensive wash to remove any non-specific binding, the immunoprecipitated products were analyzed with rabbit anti-DDK polyclonal antibody.



Flow cytometric Analysis of HeLa cells, using anti-RPA2 antibody ([TA500788]), (Red), compared to a nonspecific negative control antibody, (Blue).



Flow cytometric Analysis of Jurkat cells, using anti-RPA2 antibody ([TA500788]), (Red), compared to a nonspecific negative control antibody, (Blue).