

## Product datasheet for **TA500784M**

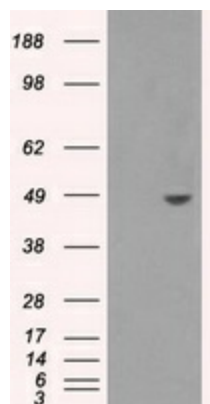
### Sorbitol Dehydrogenase (SORD) Mouse Monoclonal Antibody [Clone ID: OTI13G5]

#### Product data:

Product Type:	Primary Antibodies
Clone Name:	OTI13G5
Applications:	WB
Recommended Dilution:	WB 1:1000
Reactivity:	Human
Host:	Mouse
Isotype:	IgG1
Clonality:	Monoclonal
Immunogen:	Full length human recombinant protein of human SORD (NP_003095) produced in HEK293T cell.
Formulation:	PBS (pH 7.3) containing 1% BSA, 50% glycerol and 0.02% sodium azide.
Concentration:	0.57 mg/ml
Purification:	Purified from mouse ascites fluids or tissue culture supernatant by affinity chromatography (protein A/G)
Conjugation:	Unconjugated
Storage:	Store at -20°C as received.
Stability:	Stable for 12 months from date of receipt.
Predicted Protein Size:	47.0 kDa
Gene Name:	sorbitol dehydrogenase
Database Link:	<a href="#">NP_003095</a> <a href="#">Entrez Gene 6652 Human</a> <a href="#">Q00796</a>
Synonyms:	HEL-S-95n; SORD1
Protein Families:	Druggable Genome
Protein Pathways:	Fructose and mannose metabolism, Metabolic pathways

[View online »](#)

## Product images:



HEK293T cells were transfected with the pCMV6-ENTRY control (Left lane) or pCMV6-ENTRY SORD ([RC200415], Right lane) cDNA for 48 hrs and lysed. Equivalent amounts of cell lysates (5 ug per lane) were separated by SDS-PAGE and immunoblotted with anti-SORD. Positive lysates [LY401082] (100ug) and [LC401082] (20ug) can be purchased separately from OriGene.