

## Product datasheet for **TA500783AM**

### **AKT2 Mouse Monoclonal Antibody (Biotin conjugated) [Clone ID: OTI8D9]**

#### **Product data:**

<b>Product Type:</b>	Primary Antibodies
<b>Clone Name:</b>	OTI8D9
<b>Applications:</b>	FC, IP, WB
<b>Recommended Dilution:</b>	WB 1:2000, FLOW 1:100, IP 2ug/500ul
<b>Reactivity:</b>	Human, Mouse, Rat
<b>Host:</b>	Mouse
<b>Isotype:</b>	IgG1
<b>Clonality:</b>	Monoclonal
<b>Immunogen:</b>	Full length human recombinant protein of human AKT2 (NP_001617) produced in HEK293T cell.
<b>Formulation:</b>	PBS (pH 7.3) containing 1% BSA, 50% glycerol and 0.02% sodium azide.
<b>Concentration:</b>	0.5 mg/ml
<b>Purification:</b>	Purified from mouse ascites fluids or tissue culture supernatant by affinity chromatography (protein A/G)
<b>Conjugation:</b>	Biotin
<b>Storage:</b>	Store at -20°C as received.
<b>Stability:</b>	Stable for 12 months from date of receipt.
<b>Predicted Protein Size:</b>	55.6 kDa
<b>Gene Name:</b>	AKT serine/threonine kinase 2
<b>Database Link:</b>	<a href="#">NP_001617</a> <a href="#">Entrez Gene 11652 Mouse</a> <a href="#">Entrez Gene 25233 Rat</a> <a href="#">Entrez Gene 208 Human</a> <a href="#">P31751</a>

**Background:** This gene is a putative oncogene encoding a protein belonging to a subfamily of serine/threonine kinases containing SH2-like (Src homology 2-like) domains. The gene was shown to be amplified and overexpressed in 2 of 8 ovarian carcinoma cell lines and 2 of 15 primary ovarian tumors. Overexpression contributes to the malignant phenotype of a subset of human ductal pancreatic cancers. The encoded protein is a general protein kinase capable of phosphorylating several known proteins. [provided by RefSeq]



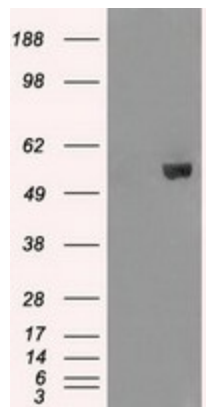
[View online »](#)

**Synonyms:** HIHGHH; PKBB; PKBBETA; PRKBB; RAC-BETA

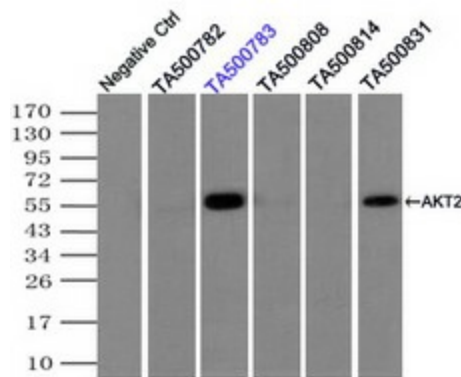
**Protein Families:** Druggable Genome, ES Cell Differentiation/IPS, Protein Kinase

**Protein Pathways:** Acute myeloid leukemia, Adipocytokine signaling pathway, Apoptosis, B cell receptor signaling pathway, Chemokine signaling pathway, Chronic myeloid leukemia, Colorectal cancer, Endometrial cancer, ErbB signaling pathway, Fc epsilon RI signaling pathway, Fc gamma R-mediated phagocytosis, Focal adhesion, Glioma, Insulin signaling pathway, Jak-STAT signaling pathway, MAPK signaling pathway, Melanoma, mTOR signaling pathway, Neurotrophin signaling pathway, Non-small cell lung cancer, Pancreatic cancer, Pathways in cancer, Progesterone-mediated oocyte maturation, Prostate cancer, Renal cell carcinoma, Small cell lung cancer, T cell receptor signaling pathway, Tight junction, Toll-like receptor signaling pathway, VEGF signaling pathway

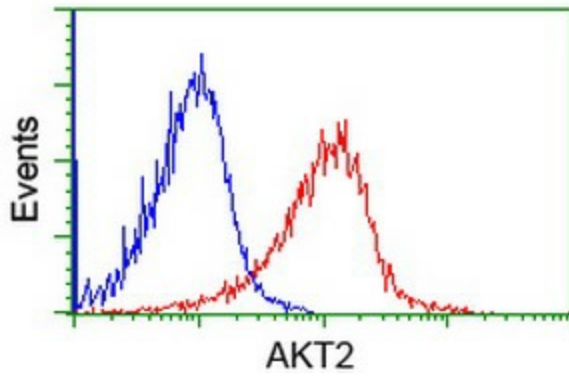
**Product images:**



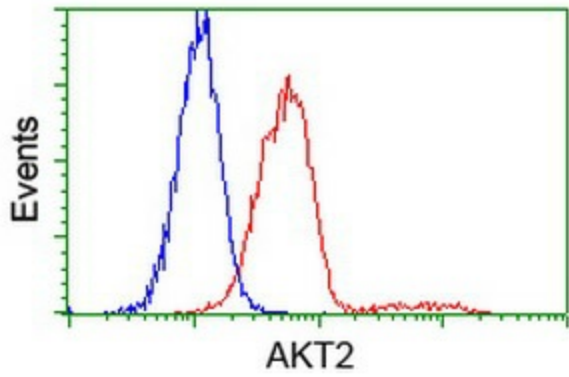
HEK293T cells were transfected with the pCMV6-ENTRY control (Left lane) or pCMV6-ENTRY AKT2 ([RC217733], Right lane) cDNA for 48 hrs and lysed. Equivalent amounts of cell lysates (5 ug per lane) were separated by SDS-PAGE and immunoblotted with anti-AKT2. Positive lysates [LY419836] (100ug) and [LC419836] (20ug) can be purchased separately from OriGene.



Immunoprecipitation (IP) of AKT2 by using TrueMab monoclonal anti-AKT2 antibodies (Negative control: IP without adding anti-AKT2 antibody.). For each experiment, 500ul of DDK tagged AKT2 overexpression lysates (at 1:5 dilution with HEK293T lysate), 2ug of anti-AKT2 antibody and 20ul (0.1mg) of goat anti-mouse conjugated magnetic beads were mixed and incubated overnight. After extensive wash to remove any non-specific binding, the immunoprecipitated products were analyzed with rabbit anti-DDK polyclonal antibody.



Flow cytometric Analysis of Jurkat cells, using anti-AKT2 antibody ([TA500783]), (Red), compared to a nonspecific negative control antibody, (Blue).



Flow cytometric Analysis of HeLa cells, using anti-AKT2 antibody ([TA500783]), (Red), compared to a nonspecific negative control antibody, (Blue).