

Product datasheet for **TA500778S**

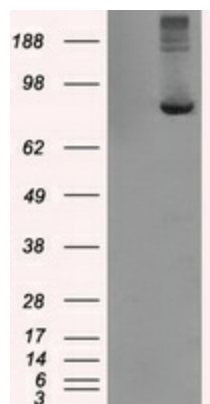
TTL12 Mouse Monoclonal Antibody [Clone ID: OTI4E3]

Product data:

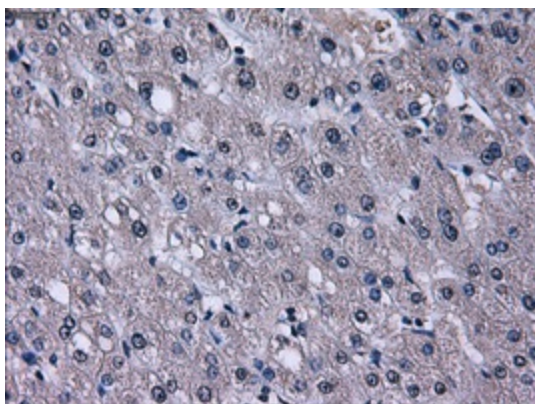
Product Type:	Primary Antibodies
Clone Name:	OTI4E3
Applications:	FC, IF, IHC, WB
Recommended Dilution:	WB 1:2000, IHC 1:50, IF 1:100, Flow 1:100
Reactivity:	Human, Mouse, Rat
Host:	Mouse
Isotype:	IgG2a
Clonality:	Monoclonal
Immunogen:	Full length human recombinant protein of human TTL12 (NP_055955) produced in HEK293T cell.
Formulation:	PBS (pH 7.3) containing 1% BSA, 50% glycerol and 0.02% sodium azide.
Concentration:	0.73 mg/ml
Purification:	Purified from mouse ascites fluids or tissue culture supernatant by affinity chromatography (protein A/G)
Conjugation:	Unconjugated
Storage:	Store at -20°C as received.
Stability:	Stable for 12 months from date of receipt.
Predicted Protein Size:	74.4 kDa
Gene Name:	tubulin tyrosine ligase like 12
Database Link:	NP_055955 Entrez Gene 300105 Rat Entrez Gene 23170 Human Q14166
Synonyms:	dj526i14.2



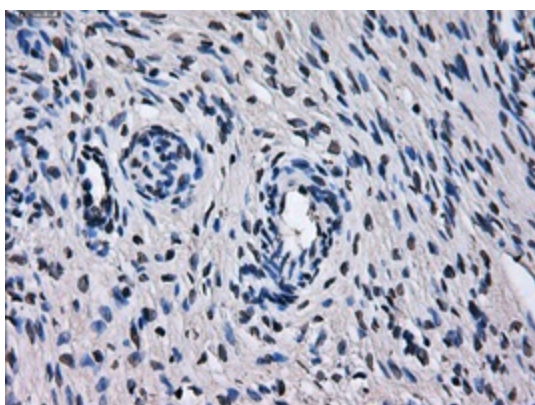
[View online »](#)

Product images:

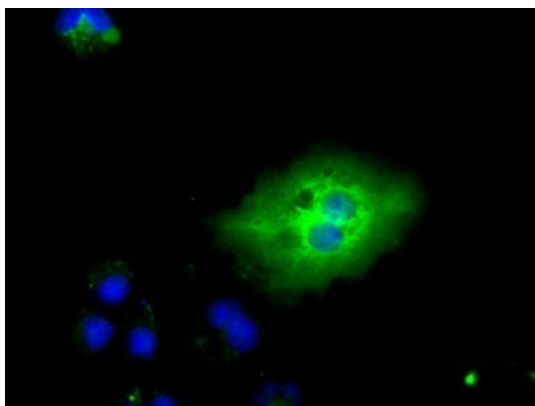
HEK293T cells were transfected with the pCMV6-ENTRY control (Left lane) or pCMV6-ENTRY TTLL12 ([RC200841], Right lane) cDNA for 48 hrs and lysed. Equivalent amounts of cell lysates (5 ug per lane) were separated by SDS-PAGE and immunoblotted with anti-TTLL12. Positive lysates [LY402417] (100ug) and [LC402417] (20ug) can be purchased separately from OriGene.



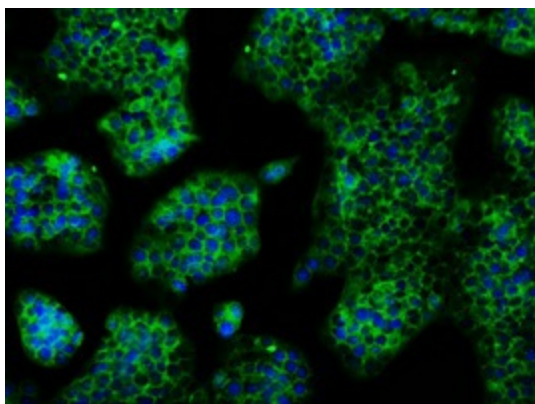
Immunohistochemical staining of paraffin-embedded liver tissue within the normal limits using anti-TTLL12 mouse monoclonal antibody. (Heat-induced epitope retrieval by 10mM citric buffer, pH6.0, 100°C for 10min, [TA500778], Dilution 1:50)



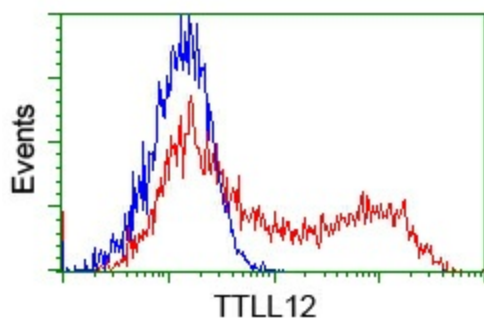
Immunohistochemical staining of paraffin-embedded Ovary tissue within the normal limits using anti-TTLL12 mouse monoclonal antibody. (Heat-induced epitope retrieval by 10mM citric buffer, pH6.0, 100°C for 10min, [TA500778], Dilution 1:50)



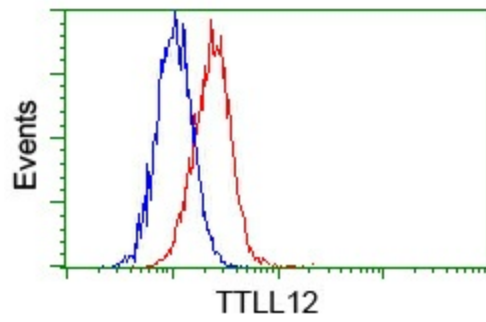
Anti-TTLL12 mouse monoclonal antibody ([TA500778]) immunofluorescent staining of COS7 cells transiently transfected by pCMV6-ENTRY TTLL12 ([RC200841]).



Immunofluorescent staining of HepG2 cells using anti-TTLL12 mouse monoclonal antibody ([TA500778]).



HEK293T cells transfected with either pCMV6-ENTRY TTLL12 ([RC200841]) (Red) or empty vector control plasmid (Blue) were immunostained with anti-TTLL12 mouse monoclonal ([TA500778], Dilution 1:1,000), and then analyzed by flow cytometry.



Flow cytometric analysis of HeLa cells, using anti-TTLL12 antibody (TA500778), (Red) compared to a nonspecific negative control antibody (TA50011) (Blue).