

## Product datasheet for **TA500777AM**

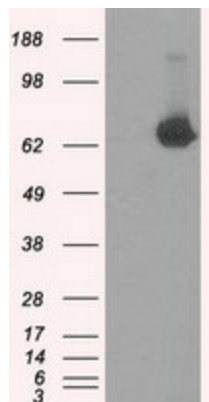
### **TTL12 Mouse Monoclonal Antibody (Biotin conjugated) [Clone ID: OT1A2]**

#### **Product data:**

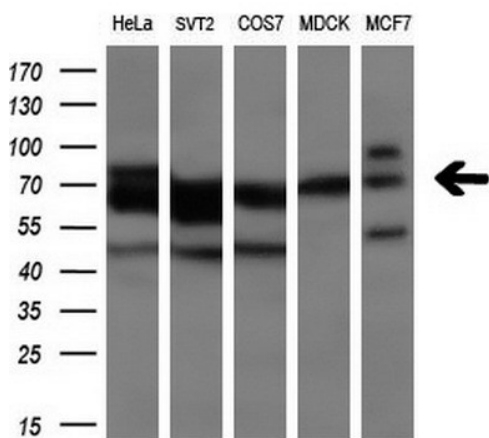
Product Type:	Primary Antibodies
Clone Name:	OT1A2
Applications:	FC, IHC, WB
Recommended Dilution:	WB 1:2000, IHC 1:50, Flow 1:100
Reactivity:	Human, Mouse, Rat
Host:	Mouse
Isotype:	IgG1
Clonality:	Monoclonal
Immunogen:	Full length human recombinant protein of human TTL12 (NP_055955) produced in HEK293T cell.
Formulation:	PBS (pH 7.3) containing 1% BSA, 50% glycerol and 0.02% sodium azide.
Concentration:	0.5 mg/ml
Purification:	Purified from mouse ascites fluids or tissue culture supernatant by affinity chromatography (protein A/G)
Conjugation:	Biotin
Storage:	Store at -20°C as received.
Stability:	Stable for 12 months from date of receipt.
Predicted Protein Size:	74.4 kDa
Gene Name:	tubulin tyrosine ligase like 12
Database Link:	<a href="#">NP_055955</a> <a href="#">Entrez Gene 300105 Rat</a> <a href="#">Entrez Gene 23170 Human</a> <a href="#">Q14166</a>
Synonyms:	dj526i14.2



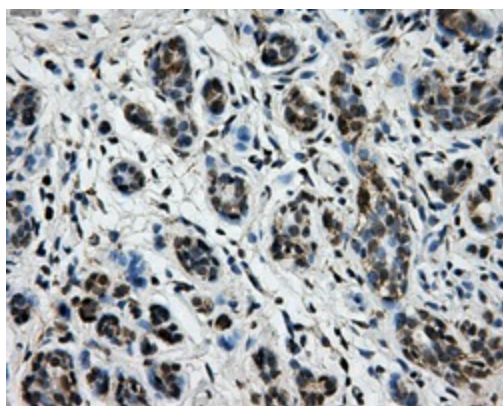
[View online »](#)

**Product images:**


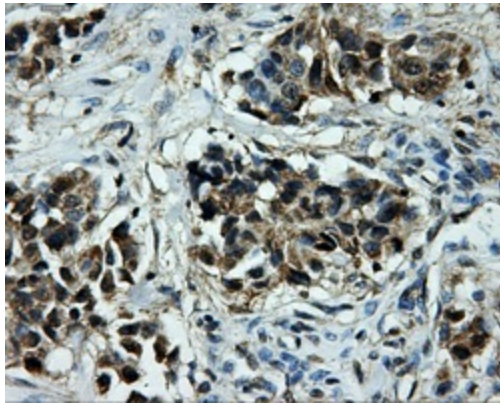
HEK293T cells were transfected with the pCMV6-ENTRY control (Left lane) or pCMV6-ENTRY TLL12 ([RC200841], Right lane) cDNA for 48 hrs and lysed. Equivalent amounts of cell lysates (5 ug per lane) were separated by SDS-PAGE and immunoblotted with anti-TLL12. Positive lysates [LY402417] (100ug) and [LC402417] (20ug) can be purchased separately from OriGene.



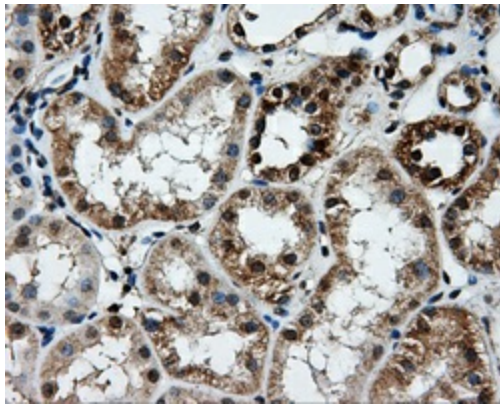
Western blot analysis of extracts (10ug) from 5 different cell lines by using anti-TLL12 monoclonal antibody (1:200).



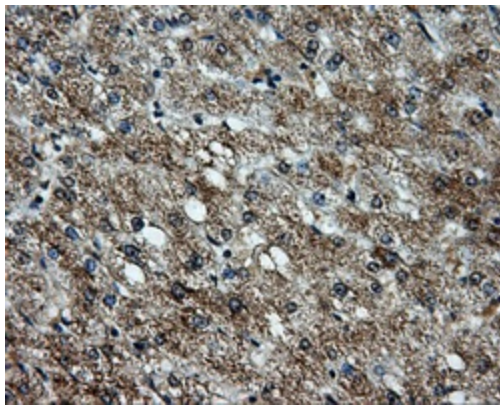
Immunohistochemical staining of paraffin-embedded breast tissue within the normal limits using anti-TLL12 mouse monoclonal antibody. (Heat-induced epitope retrieval by 10mM citric buffer, pH6.0, 100°C for 10min, [TA500777], Dilution 1:50)



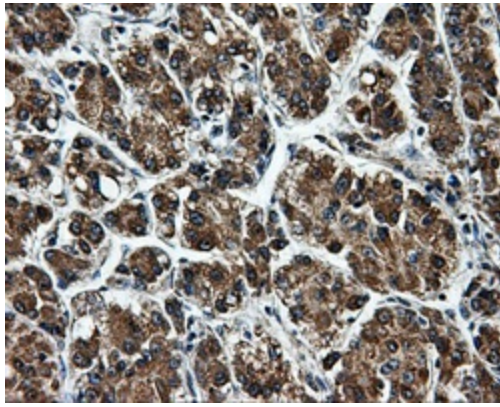
Immunohistochemical staining of paraffin-embedded Adenocarcinoma of breast tissue using anti-TLL12 mouse monoclonal antibody. (Heat-induced epitope retrieval by 10mM citric buffer, pH6.0, 100°C for 10min, [TA500777], Dilution 1:50)



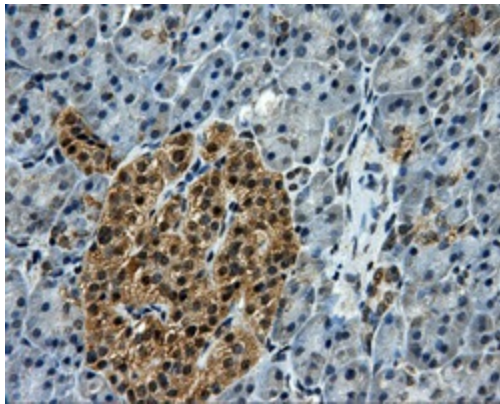
Immunohistochemical staining of paraffin-embedded Kidney tissue within the normal limits using anti-TLL12 mouse monoclonal antibody. (Heat-induced epitope retrieval by 10mM citric buffer, pH6.0, 100°C for 10min, [TA500777], Dilution 1:50)



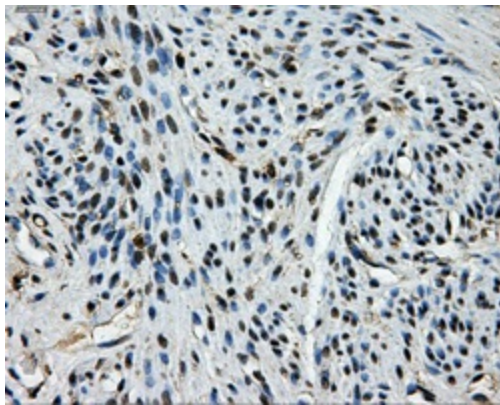
Immunohistochemical staining of paraffin-embedded liver tissue within the normal limits using anti-TLL12 mouse monoclonal antibody. (Heat-induced epitope retrieval by 10mM citric buffer, pH6.0, 100°C for 10min, [TA500777], Dilution 1:50)



Immunohistochemical staining of paraffin-embedded Carcinoma of liver tissue using anti-TTLL12 mouse monoclonal antibody. (Heat-induced epitope retrieval by 10mM citric buffer, pH6.0, 100°C for 10min, [TA500777], Dilution 1:50)

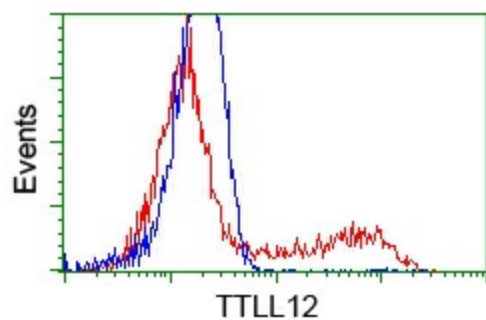


Immunohistochemical staining of paraffin-embedded pancreas tissue within the normal limits using anti-TTLL12 mouse monoclonal antibody. (Heat-induced epitope retrieval by 10mM citric buffer, pH6.0, 100°C for 10min, [TA500777], Dilution 1:50)



Immunohistochemical staining of paraffin-embedded endometrium tissue within the normal limits using anti-TTLL12 mouse monoclonal antibody. (Heat-induced epitope retrieval by 10mM citric buffer, pH6.0, 100°C for 10min, [TA500777], Dilution 1:50)





HEK293T cells transfected with either pCMV6-ENTRY TTLL12 ([RC200841]) (Red) or empty vector control plasmid (Blue) were immunostained with anti-TTLL12 mouse monoclonal ([TA500777]), and then analyzed by flow cytometry.