

## Product datasheet for **TA500773M**

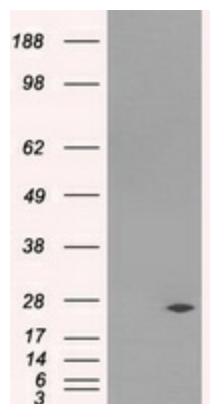
### DCXR Mouse Monoclonal Antibody [Clone ID: OTI7D11]

#### Product data:

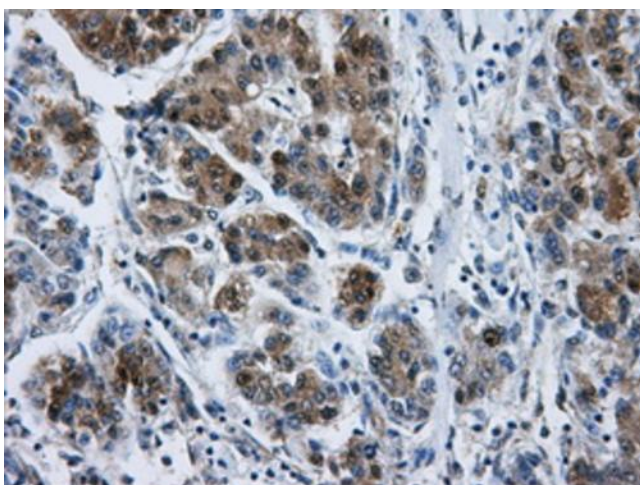
Product Type:	Primary Antibodies
Clone Name:	OTI7D11
Applications:	IHC, WB
Recommended Dilution:	WB 1:2000, IHC 1:50
Reactivity:	Human
Host:	Mouse
Isotype:	IgG1
Clonality:	Monoclonal
Immunogen:	Full length human recombinant protein of human DCXR (NP_057370) produced in HEK293T cell.
Formulation:	PBS (pH 7.3) containing 1% BSA, 50% glycerol and 0.02% sodium azide.
Concentration:	0.51 mg/ml
Purification:	Purified from mouse ascites fluids or tissue culture supernatant by affinity chromatography (protein A/G)
Conjugation:	Unconjugated
Storage:	Store at -20°C as received.
Stability:	Stable for 12 months from date of receipt.
Predicted Protein Size:	25.9 kDa
Gene Name:	dicarbonyl and L-xylulose reductase
Database Link:	<a href="#">NP_057370</a> <a href="#">Entrez Gene 51181 Human</a> <a href="#">Q7Z4W1</a>
Background:	DCXR is an enzyme that has both diacetyl reductase (EC 1.1.1.5) and L-xylulose reductase (EC 1.1.1.10) activities
Synonyms:	DCR; HCR2; HCR11; KIDCR; P34H; PNTSU; SDR20C1; XR
Protein Families:	Druggable Genome
Protein Pathways:	Metabolic pathways, Pentose and glucuronate interconversions


[View online »](#)

## Product images:



HEK293T cells were transfected with the pCMV6-ENTRY control (Left lane) or pCMV6-ENTRY DCXR ([RC200023], Right lane) cDNA for 48 hrs and lysed. Equivalent amounts of cell lysates (5 ug per lane) were separated by SDS-PAGE and immunoblotted with anti-DCXR. Positive lysates [LY402535] (100ug) and [LC402535] (20ug) can be purchased separately from OriGene.



Immunohistochemical staining of paraffin-embedded Carcinoma of liver tissue using anti-DCXR mouse monoclonal antibody. Heat-induced epitope retrieval by EDTA solution buffer pH 8.0 at 120°C for 3 min.