

## Product datasheet for **TA500763**

### **RPA34 (RPA2) Mouse Monoclonal Antibody [Clone ID: OTI9A1]**

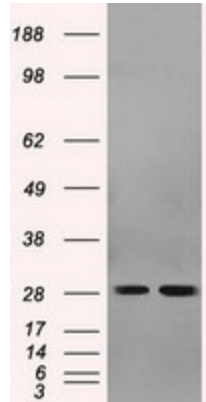
#### **Product data:**

<b>Product Type:</b>	Primary Antibodies
<b>Clone Name:</b>	OTI9A1
<b>Applications:</b>	FC, IF, IHC, IP, WB
<b>Recommended Dilution:</b>	WB 1:1000~2000, IHC 1:50, IF 1:100, FLOW 1:100, IP 2ug/500ul
<b>Reactivity:</b>	Human, Monkey, Mouse, Rat
<b>Host:</b>	Mouse
<b>Isotype:</b>	IgG1
<b>Clonality:</b>	Monoclonal
<b>Immunogen:</b>	Full length human recombinant protein of human RPA2 (NP_002937) produced in HEK293T cell.
<b>Formulation:</b>	PBS (pH 7.3) containing 1% BSA, 50% glycerol and 0.02% sodium azide.
<b>Concentration:</b>	0.7 mg/ml
<b>Purification:</b>	Purified from mouse ascites fluids or tissue culture supernatant by affinity chromatography (protein A/G)
<b>Conjugation:</b>	Unconjugated
<b>Storage:</b>	Store at -20°C as received.
<b>Stability:</b>	Stable for 12 months from date of receipt.
<b>Predicted Protein Size:</b>	29.1 kDa
<b>Gene Name:</b>	replication protein A2
<b>Database Link:</b>	<a href="#">NP_002937</a> <a href="#">Entrez Gene 19891 Mouse</a> <a href="#">Entrez Gene 59102 Rat</a> <a href="#">Entrez Gene 716612 Monkey</a> <a href="#">Entrez Gene 6118 Human</a> <a href="#">P15927</a>
<b>Synonyms:</b>	REPA2; RP-A p32; RP-A p34; RPA32
<b>Protein Families:</b>	Druggable Genome, Stem cell - Pluripotency
<b>Protein Pathways:</b>	DNA replication, Homologous recombination, Mismatch repair, Nucleotide excision repair

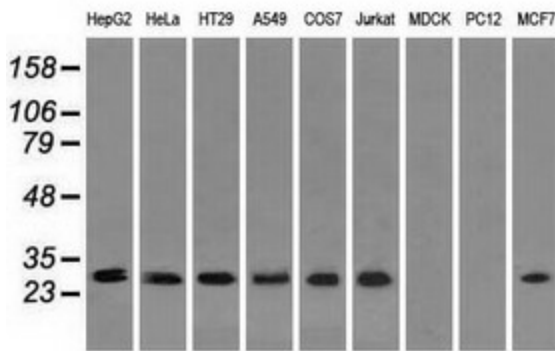


[View online »](#)

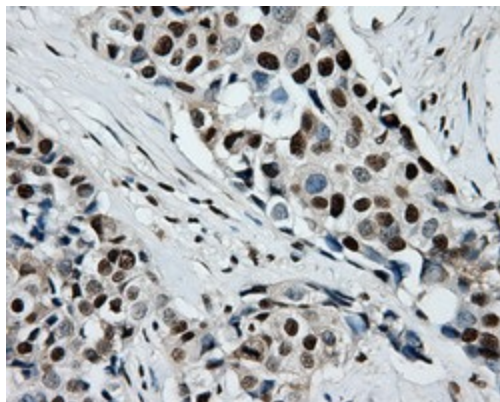
**Product images:**



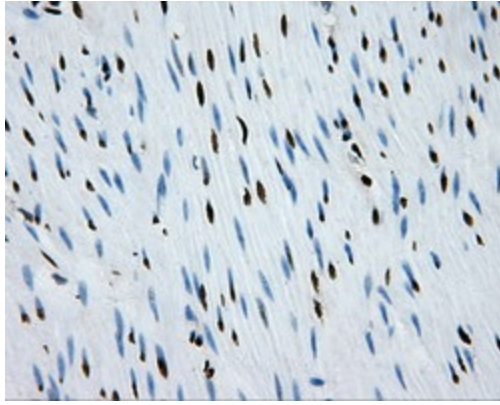
HEK293T cells were transfected with the pCMV6-ENTRY control (Cat# [PS100001], Left lane) or pCMV6-ENTRY RPA2 (Cat# [RC205715], Right lane) cDNA for 48 hrs and lysed. Equivalent amounts of cell lysates (5 ug per lane) were separated by SDS-PAGE and immunoblotted with anti-RPA2 (Cat# TA500763). Positive lysates [LY401031] (100ug) and [LC401031] (20ug) can be purchased separately from OriGene.



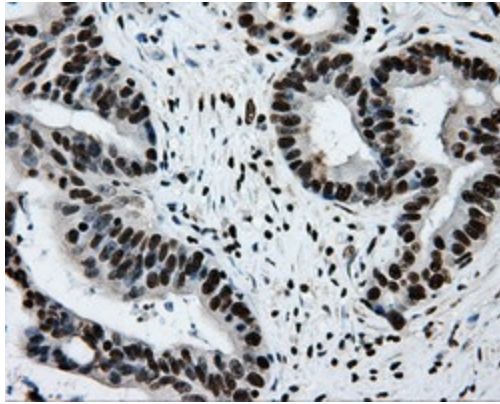
Western blot analysis of extracts (35ug) from 9 different cell lines by using anti-RPA2 monoclonal antibody (HepG2: human; HeLa: human; SVT2: mouse; A549: human; COS7: monkey; Jurkat: human; MDCK: canine; PC12: rat; MCF7: human).



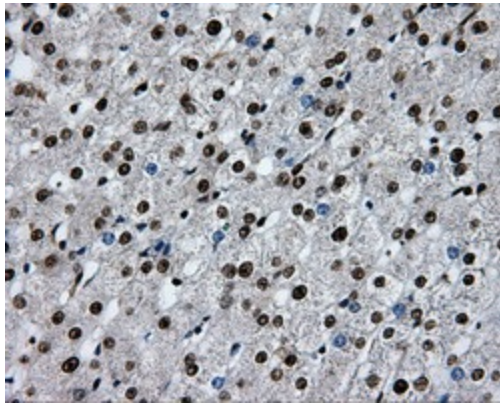
Immunohistochemical staining of paraffin-embedded Adenocarcinoma of Human breast tissue using anti-RPA2 mouse monoclonal antibody. (Heat-induced epitope retrieval by 10mM citric buffer, pH6.0, 100°C for 10min, TA500763)



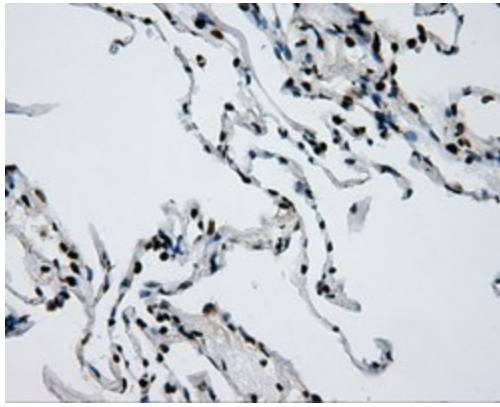
Immunohistochemical staining of paraffin-embedded Human colon tissue within the normal limits using anti-RPA2 mouse monoclonal antibody. (Heat-induced epitope retrieval by 10mM citric buffer, pH6.0, 100°C for 10min, TA500763)



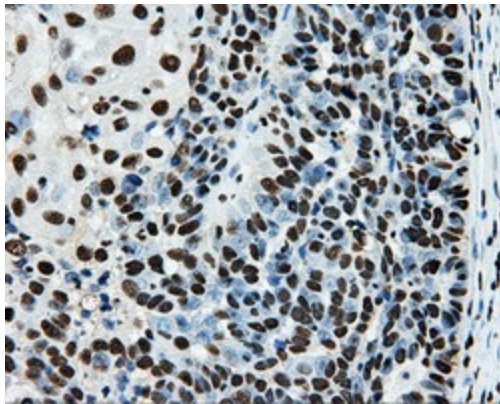
Immunohistochemical staining of paraffin-embedded Adenocarcinoma of Human colon tissue using anti-RPA2 mouse monoclonal antibody. (Heat-induced epitope retrieval by 10mM citric buffer, pH6.0, 100°C for 10min, TA500763)



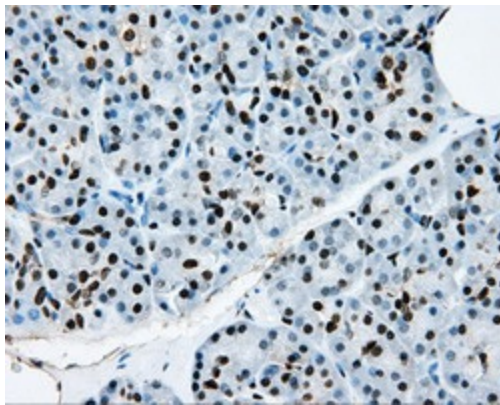
Immunohistochemical staining of paraffin-embedded Human liver tissue within the normal limits using anti-RPA2 mouse monoclonal antibody. (Heat-induced epitope retrieval by 10mM citric buffer, pH6.0, 100°C for 10min, TA500763)



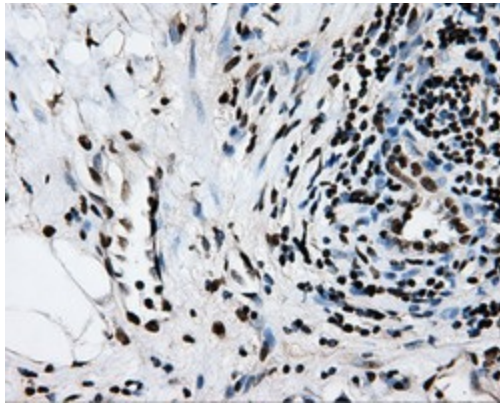
Immunohistochemical staining of paraffin-embedded Human lung tissue within the normal limits using anti-RPA2 mouse monoclonal antibody. (Heat-induced epitope retrieval by 10mM citric buffer, pH6.0, 100°C for 10min, TA500763)



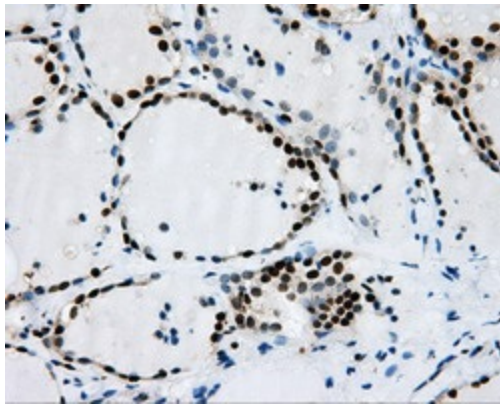
Immunohistochemical staining of paraffin-embedded Adenocarcinoma of Human ovary tissue using anti-RPA2 mouse monoclonal antibody. (Heat-induced epitope retrieval by 10mM citric buffer, pH6.0, 100°C for 10min, TA500763)



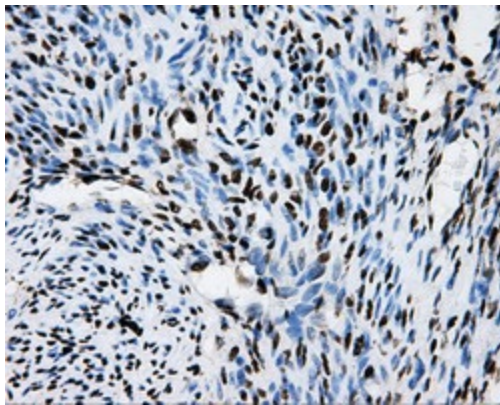
Immunohistochemical staining of paraffin-embedded Human pancreas tissue within the normal limits using anti-RPA2 mouse monoclonal antibody. (Heat-induced epitope retrieval by 10mM citric buffer, pH6.0, 100°C for 10min, TA500763)



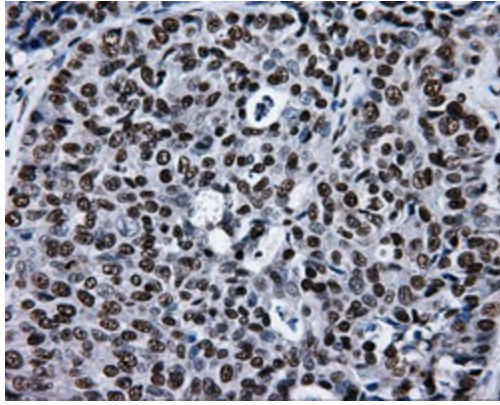
Immunohistochemical staining of paraffin-embedded Carcinoma of Human pancreas tissue using anti-RPA2 mouse monoclonal antibody. (Heat-induced epitope retrieval by 10mM citric buffer, pH6.0, 100°C for 10min, TA500763)



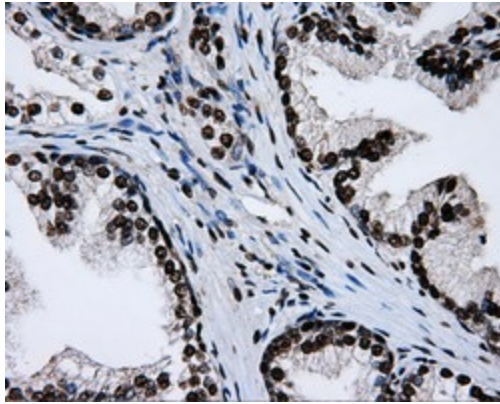
Immunohistochemical staining of paraffin-embedded Human thyroid tissue within the normal limits using anti-RPA2 mouse monoclonal antibody. (Heat-induced epitope retrieval by 10mM citric buffer, pH6.0, 100°C for 10min, TA500763)



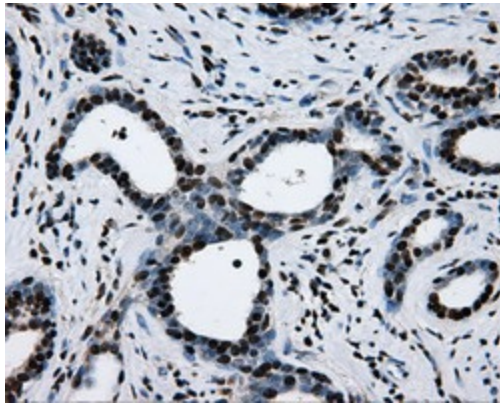
Immunohistochemical staining of paraffin-embedded Human endometrium tissue within the normal limits using anti-RPA2 mouse monoclonal antibody. (Heat-induced epitope retrieval by 10mM citric buffer, pH6.0, 100°C for 10min, TA500763)



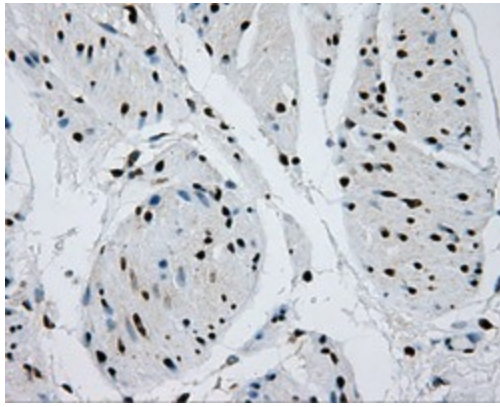
Immunohistochemical staining of paraffin-embedded Adenocarcinoma of Human endometrium tissue using anti-RPA2 mouse monoclonal antibody. (Heat-induced epitope retrieval by 10mM citric buffer, pH6.0, 100°C for 10min, TA500763)



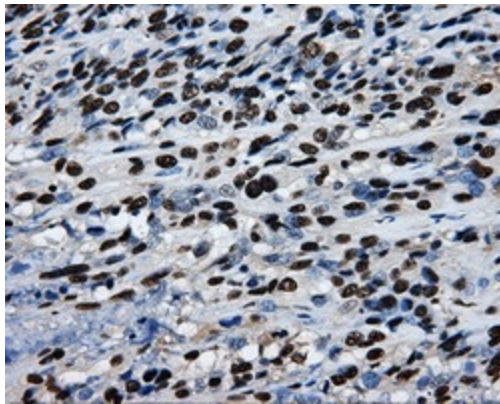
Immunohistochemical staining of paraffin-embedded Human prostate tissue within the normal limits using anti-RPA2 mouse monoclonal antibody. (Heat-induced epitope retrieval by 10mM citric buffer, pH6.0, 100°C for 10min, TA500763)



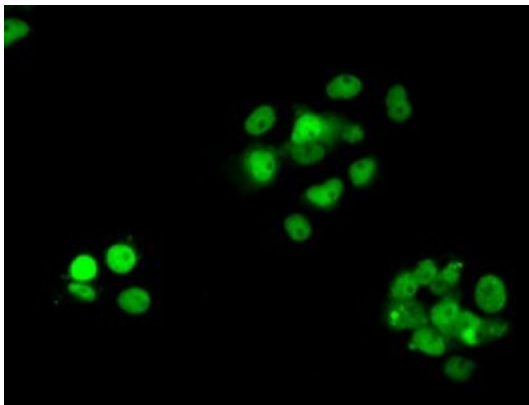
Immunohistochemical staining of paraffin-embedded Carcinoma of Human prostate tissue using anti-RPA2 mouse monoclonal antibody. (Heat-induced epitope retrieval by 10mM citric buffer, pH6.0, 100°C for 10min, TA500763)



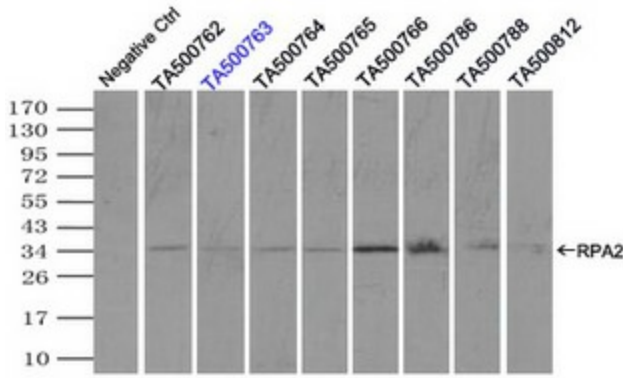
Immunohistochemical staining of paraffin-embedded Human bladder tissue within the normal limits using anti-RPA2 mouse monoclonal antibody. (Heat-induced epitope retrieval by 10mM citric buffer, pH6.0, 100°C for 10min, TA500763)



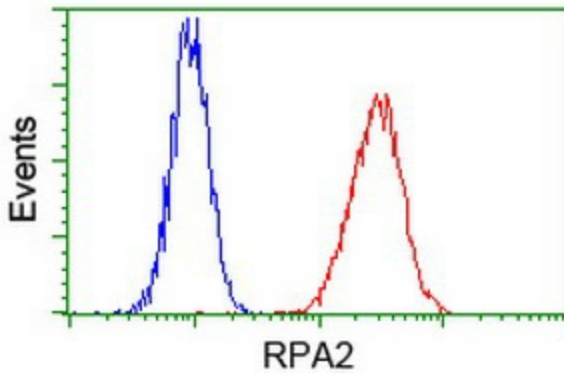
Immunohistochemical staining of paraffin-embedded Carcinoma of Human bladder tissue using anti-RPA2 mouse monoclonal antibody. (Heat-induced epitope retrieval by 10mM citric buffer, pH6.0, 100°C for 10min, TA500763)



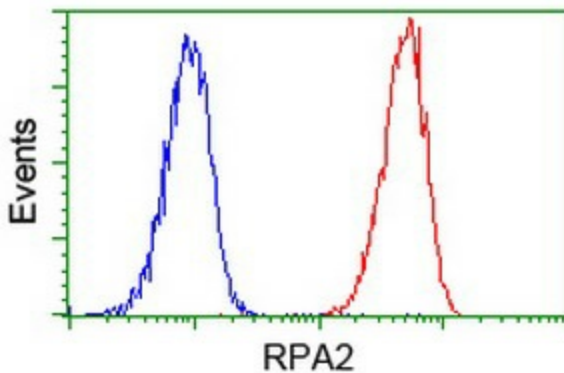
Anti-RPA2 mouse monoclonal antibody (TA500763) immunofluorescent staining of COS7 cells transiently transfected by pCMV6-ENTRY RPA2 ([RC205715]).



Immunoprecipitation (IP) of RPA2 by using TrueMab monoclonal anti-RPA2 antibodies (Negative control: IP without adding anti-RPA2 antibody.). For each experiment, 500ul of DDK tagged RPA2 overexpression lysates (at 1:5 dilution with HEK293T lysate), 2ug of anti-RPA2 antibody and 20ul (0.1mg) of goat anti-mouse conjugated magnetic beads were mixed and incubated overnight. After extensive wash to remove any non-specific binding, the immunoprecipitated products were analyzed with rabbit anti-DDK polyclonal antibody.



Flow cytometric Analysis of HeLa cells, using anti-RPA2 antibody (TA500763), (Red), compared to a nonspecific negative control antibody, (Blue).



Flow cytometric Analysis of Jurkat cells, using anti-RPA2 antibody (TA500763), (Red), compared to a nonspecific negative control antibody, (Blue).