

Product datasheet for **TA500755**

HDAC10 Mouse Monoclonal Antibody [Clone ID: OTI1B1]

Product data:

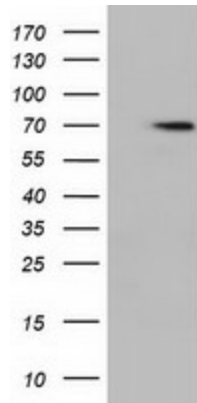
Product Type:	Primary Antibodies
Clone Name:	OTI1B1
Applications:	FC, IF, WB
Recommended Dilution:	WB 1:2000, IF 1:100, FLOW 1:100
Reactivity:	Human
Host:	Mouse
Isotype:	IgG1
Clonality:	Monoclonal
Immunogen:	Full length human recombinant protein of human HDAC10 (NP_114408) produced in HEK293T cell.
Formulation:	PBS (pH 7.3) containing 1% BSA, 50% glycerol and 0.02% sodium azide.
Concentration:	0.34 mg/ml
Purification:	Purified from mouse ascites fluids or tissue culture supernatant by affinity chromatography (protein A/G)
Conjugation:	Unconjugated
Storage:	Store at -20°C as received.
Stability:	Stable for 12 months from date of receipt.
Predicted Protein Size:	71.3 kDa
Gene Name:	histone deacetylase 10
Database Link:	NP_114408 Entrez Gene 83933 Human Q969S8
Background:	Acetylation of histone core particles modulates chromatin structure and gene expression. The opposing enzymatic activities of histone acetyltransferases and histone deacetylases, such as HDAC10, determine the acetylation status of histone tails (Kao et al., 2002 [PubMed 11677242]). [supplied by OMIM]
Synonyms:	HD10



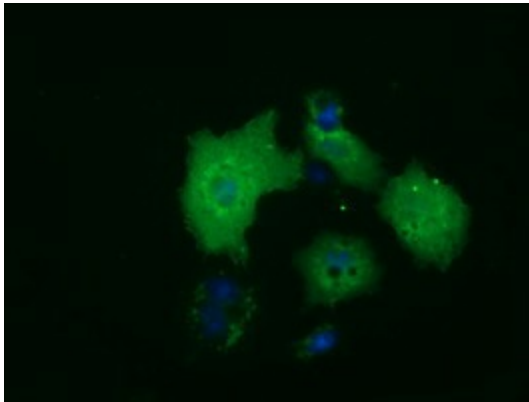
[View online »](#)

Protein Families: Druggable Genome, Transcription Factors

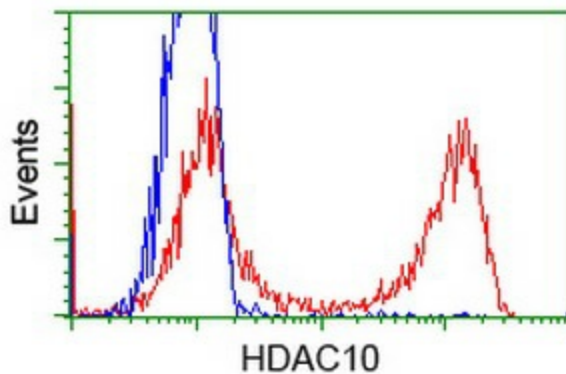
Product images:



HEK293T cells were transfected with the pCMV6-ENTRY control (Left lane) or pCMV6-ENTRY HDAC10 ([RC218536], Right lane) cDNA for 48 hrs and lysed. Equivalent amounts of cell lysates (5 ug per lane) were separated by SDS-PAGE and immunoblotted with anti-HDAC10. Positive lysates [LY403142] (100ug) and [LC403142] (20ug) can be purchased separately from OriGene.



Anti-HDAC10 mouse monoclonal antibody (TA500755) immunofluorescent staining of COS7 cells transiently transfected by pCMV6-ENTRY HDAC10 ([RC218536]).



HEK293T cells transfected with either [RC218536] overexpress plasmid (Red) or empty vector control plasmid (Blue) were immunostained by anti-HDAC10 antibody (TA500755), and then analyzed by flow cytometry.