

Product datasheet for **TA500748AM**

Sorbitol Dehydrogenase (SORD) Mouse Monoclonal Antibody (Biotin conjugated) [Clone ID: OTI17E7]

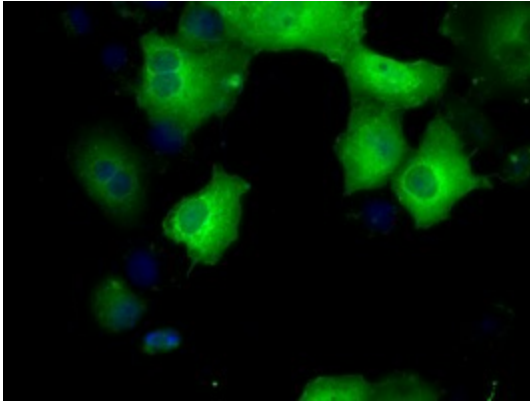
Product data:

Product Type:	Primary Antibodies
Clone Name:	OTI17E7
Applications:	FC, IF
Recommended Dilution:	IF 1:100, Flow 1:100
Reactivity:	Human
Host:	Mouse
Isotype:	IgG1
Clonality:	Monoclonal
Immunogen:	Full length human recombinant protein of human SORD (NP_003095) produced in HEK293T cell.
Formulation:	PBS (pH 7.3) containing 1% BSA, 50% glycerol and 0.02% sodium azide.
Concentration:	0.5 mg/ml
Purification:	Purified from mouse ascites fluids or tissue culture supernatant by affinity chromatography (protein A/G)
Conjugation:	Biotin
Storage:	Store at -20°C as received.
Stability:	Stable for 12 months from date of receipt.
Predicted Protein Size:	38.3 kDa
Gene Name:	sorbitol dehydrogenase
Database Link:	NP_003095 Entrez Gene 6652 Human Q00796
Synonyms:	HEL-S-95n; SORD1
Protein Families:	Druggable Genome
Protein Pathways:	Fructose and mannose metabolism, Metabolic pathways

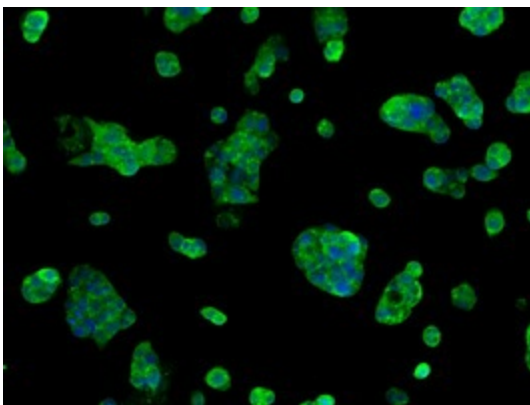


[View online »](#)

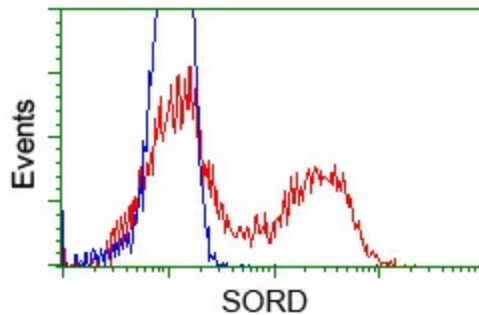
Product images:



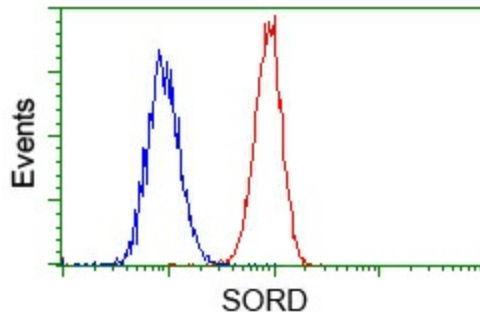
Anti-SORD mouse monoclonal antibody ([TA500748]) immunofluorescent staining of COS7 cells transiently transfected by pCMV6-ENTRY SORD ([RC200415]).



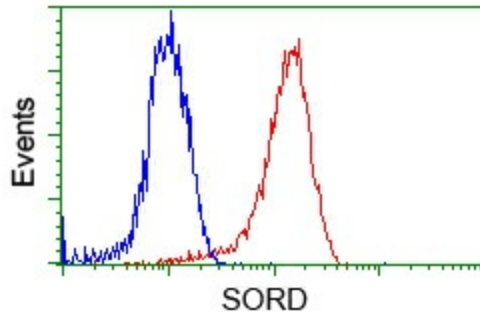
Immunofluorescent staining of HepG2 cells using anti-SORD mouse monoclonal antibody ([TA500748]).



HEK293T cells transfected with either pCMV6-ENTRY SORD ([RC200415]) (Red) or empty vector control plasmid (Blue) were immunostained with anti-SORD mouse monoclonal ([TA500748]), and then analyzed by flow cytometry.



Flow cytometric analysis of HeLa cells, using anti-SORD antibody ([TA500748]), (Red) compared to a nonspecific negative control antibody (TA50011) (Blue).



Flow cytometric analysis of Jurkat cells, using anti-SORD antibody ([TA500748]), (Red) compared to a nonspecific negative control antibody (TA50011) (Blue).