

## Product datasheet for **TA500748**

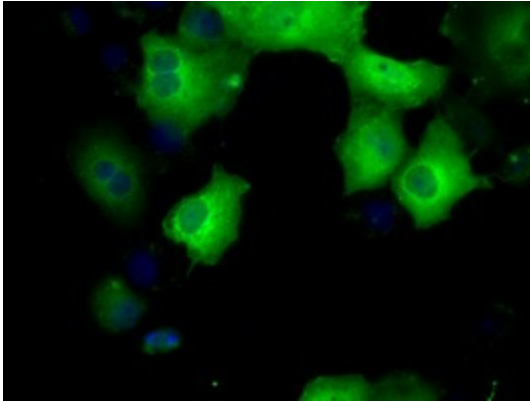
### Sorbitol Dehydrogenase (SORD) Mouse Monoclonal Antibody [Clone ID: OTI17E7]

#### Product data:

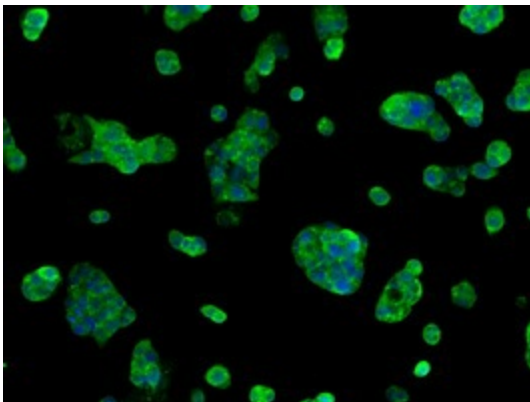
Product Type:	Primary Antibodies
Clone Name:	OTI17E7
Applications:	FC, IF
Recommend Dilution:	IF 1:100, Flow 1:100
Reactivity:	Human
Host:	Mouse
Isotype:	IgG1
Clonality:	Monoclonal
Immunogen:	Full length human recombinant protein of human SORD (NP_003095) produced in HEK293T cell.
Formulation:	PBS (pH 7.3) containing 1% BSA, 50% glycerol and 0.02% sodium azide.
Concentration:	1 mg/ml
Purification:	Purified from mouse ascites fluids or tissue culture supernatant by affinity chromatography (protein A/G)
Storage:	Store at -20°C as received.
Stability:	Stable for 12 months from date of receipt.
Predicted Protein Size:	38.3 kDa
Gene Name:	sorbitol dehydrogenase
Database Link:	<a href="#">NP_003095 Entrez Gene 6652 Human</a>
Synonyms:	HEL-S-95n; SORD1
Protein Families:	Druggable Genome
Protein Pathways:	Fructose and mannose metabolism, Metabolic pathways



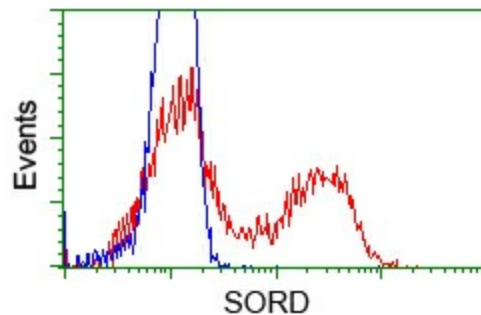
[View online »](#)

**Product images:**

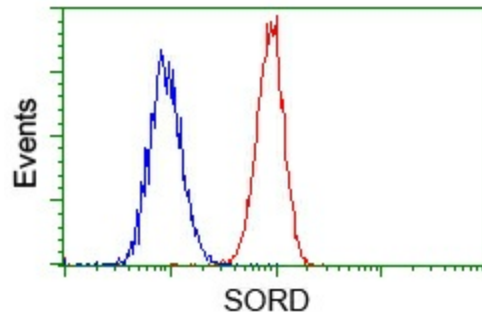
Anti-SORD mouse monoclonal antibody (TA500748) immunofluorescent staining of COS7 cells transiently transfected by pCMV6-ENTRY SORD ([RC200415]).



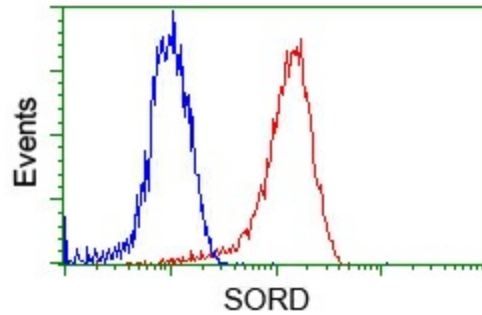
Immunofluorescent staining of HepG2 cells using anti-SORD mouse monoclonal antibody (TA500748).



HEK293T cells transfected with either pCMV6-ENTRY SORD ([RC200415]) (Red) or empty vector control plasmid (Blue) were immunostained with anti-SORD mouse monoclonal (TA500748), and then analyzed by flow cytometry.



Flow cytometric analysis of HeLa cells, using anti-SORD antibody (TA500748), (Red) compared to a nonspecific negative control antibody ([TA50011]) (Blue).



Flow cytometric analysis of Jurkat cells, using anti-SORD antibody (TA500748), (Red) compared to a nonspecific negative control antibody ([TA50011]) (Blue).