

Product datasheet for **TA500747AM**

Sorbitol Dehydrogenase (SORD) Mouse Monoclonal Antibody (Biotin conjugated) [Clone ID: OTI15H2]

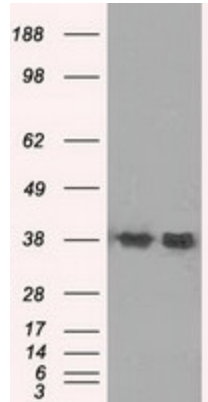
Product data:

Product Type:	Primary Antibodies
Clone Name:	OTI15H2
Applications:	FC, WB
Recommended Dilution:	WB 1:2000, Flow 1:100
Reactivity:	Human
Host:	Mouse
Isotype:	IgG1
Clonality:	Monoclonal
Immunogen:	Full length human recombinant protein of human SORD (NP_003095) produced in HEK293T cell.
Formulation:	PBS (pH 7.3) containing 1% BSA, 50% glycerol and 0.02% sodium azide.
Concentration:	0.5 mg/ml
Purification:	Purified from mouse ascites fluids or tissue culture supernatant by affinity chromatography (protein A/G)
Conjugation:	Biotin
Storage:	Store at -20°C as received.
Stability:	Stable for 12 months from date of receipt.
Predicted Protein Size:	38.3 kDa
Gene Name:	sorbitol dehydrogenase
Database Link:	NP_003095 Entrez Gene 6652 Human Q00796
Synonyms:	HEL-S-95n; SORD1
Protein Families:	Druggable Genome
Protein Pathways:	Fructose and mannose metabolism, Metabolic pathways

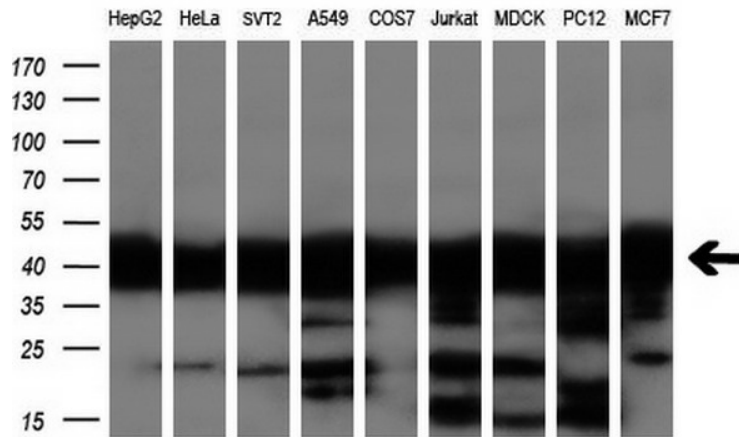


[View online »](#)

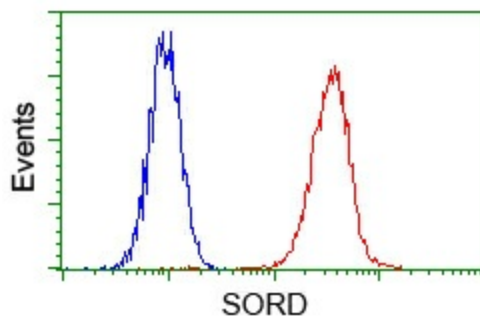
Product images:



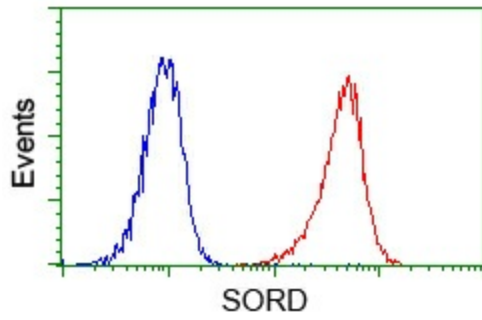
HEK293T cells were transfected with the pCMV6-ENTRY control (Left lane) or pCMV6-ENTRY SORD ([RC200415], Right lane) cDNA for 48 hrs and lysed. Equivalent amounts of cell lysates (5 ug per lane) were separated by SDS-PAGE and immunoblotted with anti-SORD. Positive lysates [LY401082] (100ug) and [LC401082] (20ug) can be purchased separately from OriGene.



Western blot analysis of extracts (35ug) from 9 different cell lines by using anti-SORD monoclonal antibody (HepG2: human; HeLa: human; SVT2: mouse; A549: human; COS7: monkey; Jurkat: human; MDCK: canine; PC12: rat; MCF7: human) (1:200).



Flow cytometric analysis of HeLa cells, using anti-SORD antibody ([TA500747]), (Red) compared to a nonspecific negative control antibody (TA50011) (Blue).



Flow cytometric analysis of Jurkat cells, using anti-SORD antibody ([TA500747]), (Red) compared to a nonspecific negative control antibody (TA50011) (Blue).