

## Product datasheet for **TA500735M**

### Cytochrome P450 2E1 (CYP2E1) Mouse Monoclonal Antibody [Clone ID: OTI9E6]

#### Product data:

Product Type:	Primary Antibodies
Clone Name:	OTI9E6
Applications:	IF, IHC, WB
Recommended Dilution:	WB 1:500, IHC 1:50, IF 1:100
Reactivity:	Human
Host:	Mouse
Isotype:	IgG1
Clonality:	Monoclonal
Immunogen:	Full length human recombinant protein of human CYP2E1 (NP_000764) produced in HEK293T cell.
Formulation:	PBS (pH 7.3) containing 1% BSA, 50% glycerol and 0.02% sodium azide.
Concentration:	0.74 mg/ml
Purification:	Purified from mouse ascites fluids or tissue culture supernatant by affinity chromatography (protein A/G)
Conjugation:	Unconjugated
Storage:	Store at -20°C as received.
Stability:	Stable for 12 months from date of receipt.
Predicted Protein Size:	56.8 kDa
Gene Name:	cytochrome P450 family 2 subfamily E member 1
Database Link:	<a href="#">NP_000764</a> <a href="#">Entrez Gene 1571 Human</a> <a href="#">P05181</a>

[View online »](#)

**Background:**

This gene encodes a member of the cytochrome P450 superfamily of enzymes. The cytochrome P450 proteins are monooxygenases which catalyze many reactions involved in drug metabolism and synthesis of cholesterol, steroids and other lipids. This protein localizes to the endoplasmic reticulum and is induced by ethanol, the diabetic state, and starvation. The enzyme metabolizes both endogenous substrates, such as ethanol, acetone, and acetal, as well as exogenous substrates including benzene, carbon tetrachloride, ethylene glycol, and nitrosamines which are premutagens found in cigarette smoke. Due to its many substrates, this enzyme may be involved in such varied processes as gluconeogenesis, hepatic cirrhosis, diabetes, and cancer.

**Synonyms:**

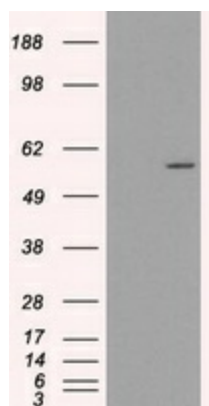
CPE1; CYP2E; P450-J; P450C2E

**Protein Families:**

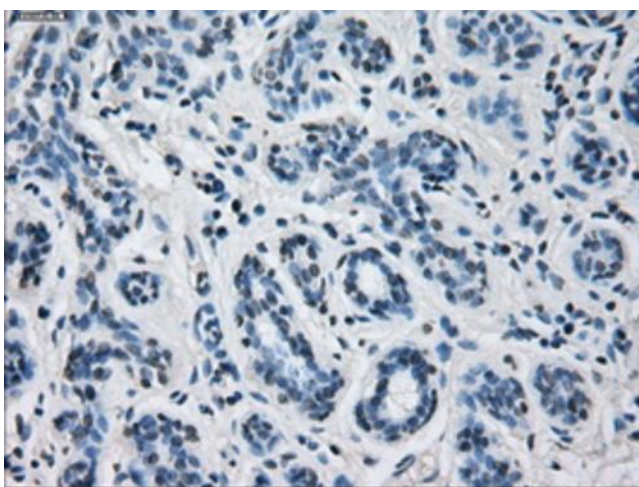
Druggable Genome, P450, Transmembrane

**Protein Pathways:**

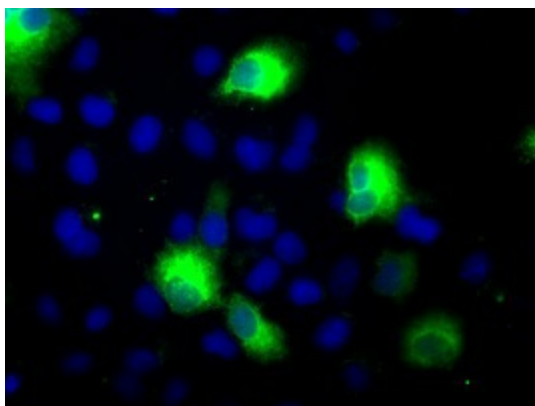
Arachidonic acid metabolism, Drug metabolism - cytochrome P450, Linoleic acid metabolism, Metabolic pathways, Metabolism of xenobiotics by cytochrome P450

**Product images:**


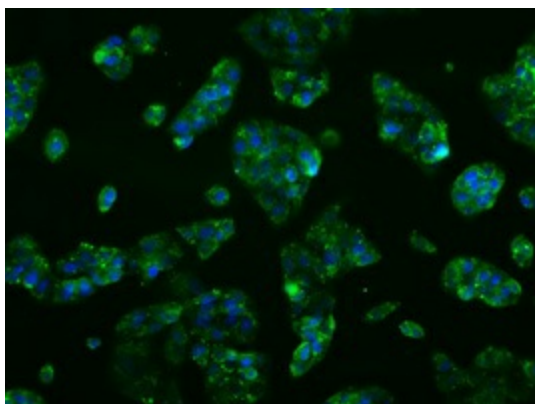
HEK293T cells were transfected with the pCMV6-ENTRY control (Left lane) or pCMV6-ENTRY CYP2E1 ([RC213502], Right lane) cDNA for 48 hrs and lysed. Equivalent amounts of cell lysates (5 ug per lane) were separated by SDS-PAGE and immunoblotted with anti-CYP2E1. Positive lysates [LY400264] (100ug) and [LC400264] (20ug) can be purchased separately from OriGene.



Immunohistochemical staining of paraffin-embedded breast tissue within the normal limits using anti-CYP2E1 mouse monoclonal antibody. Heat-induced epitope retrieval by EDTA solution buffer pH 8.0 at 120°C for 3 min.



Anti-CYP2E1 mouse monoclonal antibody ([TA500735]) immunofluorescent staining of COS7 cells transiently transfected by pCMV6-ENTRY CYP2E1 ([RC213502]).



Immunofluorescent staining of HepG2 cells using anti-CYP2E1 mouse monoclonal antibody ([TA500735]).