

## Product datasheet for **TA500730S**

### **BTN3A2 Mouse Monoclonal Antibody [Clone ID: OTI1A6]**

#### **Product data:**

<b>Product Type:</b>	Primary Antibodies
<b>Clone Name:</b>	OTI1A6
<b>Applications:</b>	IF, IHC, WB
<b>Recommended Dilution:</b>	WB 1:2000, IHC 1:50, IF 1:100
<b>Reactivity:</b>	Human
<b>Host:</b>	Mouse
<b>Isotype:</b>	IgG1
<b>Clonality:</b>	Monoclonal
<b>Immunogen:</b>	Full length human recombinant protein of human BTN3A2 (NP_008978) produced in HEK293T cell.
<b>Formulation:</b>	PBS (pH 7.3) containing 1% BSA, 50% glycerol and 0.02% sodium azide.
<b>Concentration:</b>	1 mg/ml
<b>Purification:</b>	Purified from mouse ascites fluids or tissue culture supernatant by affinity chromatography (protein A/G)
<b>Conjugation:</b>	Unconjugated
<b>Storage:</b>	Store at -20°C as received.
<b>Stability:</b>	Stable for 12 months from date of receipt.
<b>Predicted Protein Size:</b>	36.4 kDa
<b>Gene Name:</b>	butyrophilin subfamily 3 member A2
<b>Database Link:</b>	<a href="#">NP_008978</a> <a href="#">Entrez Gene 11118 Human</a> <a href="#">P78410</a>
<b>Background:</b>	This gene encodes a member of the immunoglobulin superfamily, containing two Ig domains with similarity to Ig variable and Ig constant domains. The gene resides in the juxta-telomeric region of the major histocompatibility class 1 locus on chromosome 6 in the seven member BTN cluster, which includes butyrophilin, and three members each of the BTN2 and BTN3 subfamilies. Alternatively spliced transcript variants have been described but their full-length nature has yet to be determined.

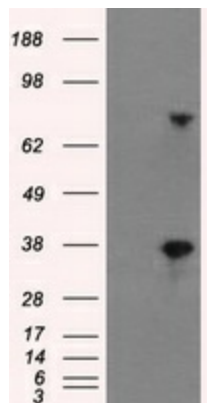


[View online »](#)

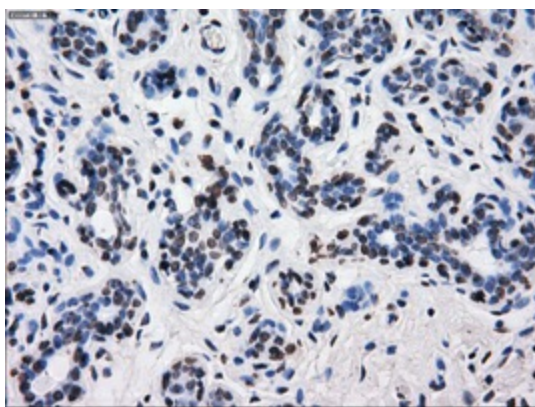
**Synonyms:** BT3.2; BTF4; BTN3.2; CD277

**Protein Families:** Druggable Genome, Transmembrane

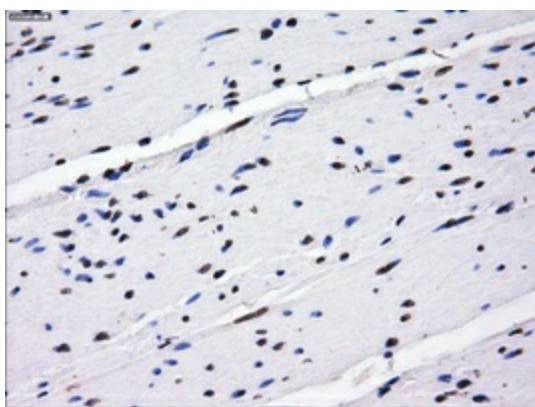
**Product images:**



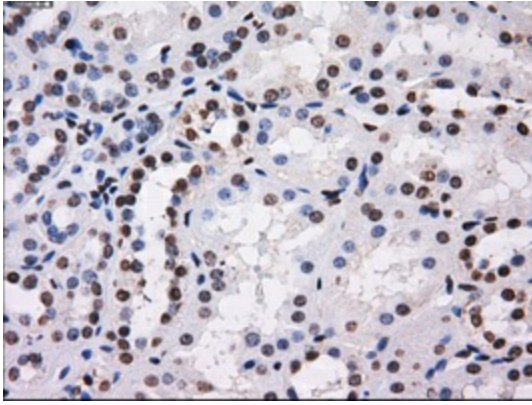
HEK293T cells were transfected with the pCMV6-ENTRY control (Cat# [PS100001], Left lane) or pCMV6-ENTRY BTN3A2 (Cat# [RC201183], Right lane) cDNA for 48 hrs and lysed. Equivalent amounts of cell lysates (5 ug per lane) were separated by SDS-PAGE and immunoblotted with anti-BTN3A2(Cat# [TA500730]). Positive lysates [LY402082] (100ug) and [LC402082] (20ug) can be purchased separately from OriGene.



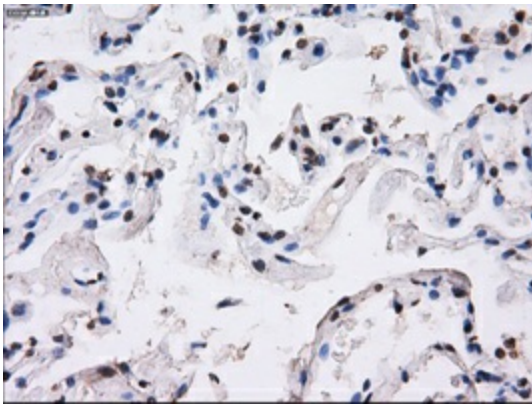
Immunohistochemical staining of paraffin-embedded breast tissue within the normal limits using anti-BTN3A2 mouse monoclonal antibody. (Heat-induced epitope retrieval by 10mM citric buffer, pH6.0, 100°C for 10min, [TA500730], Dilution 1:50)



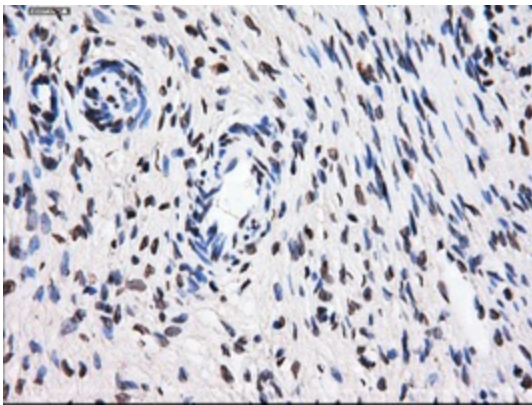
Immunohistochemical staining of paraffin-embedded colon tissue within the normal limits using anti-BTN3A2 mouse monoclonal antibody. (Heat-induced epitope retrieval by 10mM citric buffer, pH6.0, 100°C for 10min, [TA500730], Dilution 1:50)



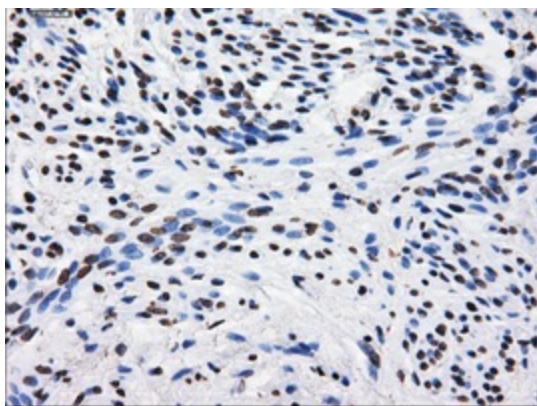
Immunohistochemical staining of paraffin-embedded Kidney tissue within the normal limits using anti-BTN3A2 mouse monoclonal antibody. (Heat-induced epitope retrieval by 10mM citric buffer, pH6.0, 100°C for 10min, [TA500730], Dilution 1:50)



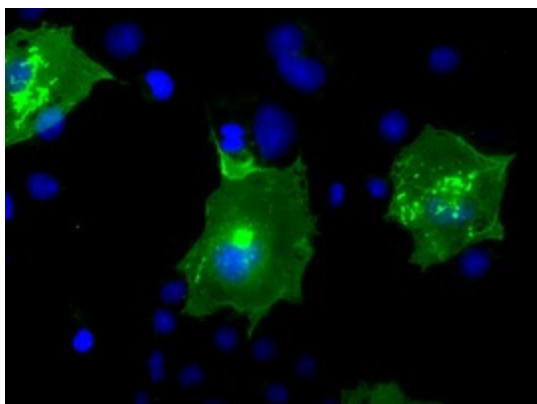
Immunohistochemical staining of paraffin-embedded lung tissue within the normal limits using anti-BTN3A2 mouse monoclonal antibody. (Heat-induced epitope retrieval by 10mM citric buffer, pH6.0, 100°C for 10min, [TA500730], Dilution 1:50)



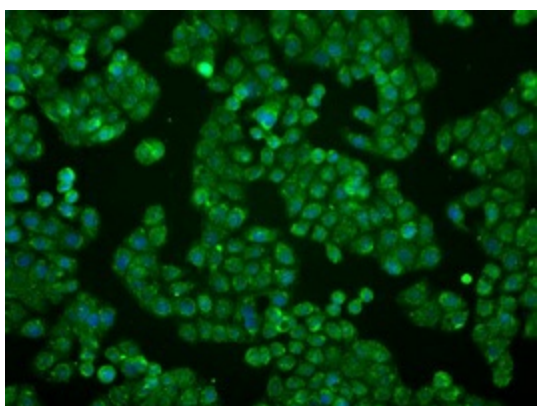
Immunohistochemical staining of paraffin-embedded Ovary tissue within the normal limits using anti-BTN3A2 mouse monoclonal antibody. (Heat-induced epitope retrieval by 10mM citric buffer, pH6.0, 100°C for 10min, [TA500730], Dilution 1:50)



Immunohistochemical staining of paraffin-embedded endometrium tissue within the normal limits using anti-BTN3A2 mouse monoclonal antibody. (Heat-induced epitope retrieval by 10mM citric buffer, pH6.0, 100°C for 10min, [TA500730], Dilution 1:50)



Anti-BTN3A2 mouse monoclonal antibody ([TA500730]) immunofluorescent staining of COS7 cells transiently transfected by pCMV6-ENTRY BTN3A2 ([RC201183]).



Immunofluorescent staining of HT29 cells using anti-BTN3A2 mouse monoclonal antibody ([TA500730]).

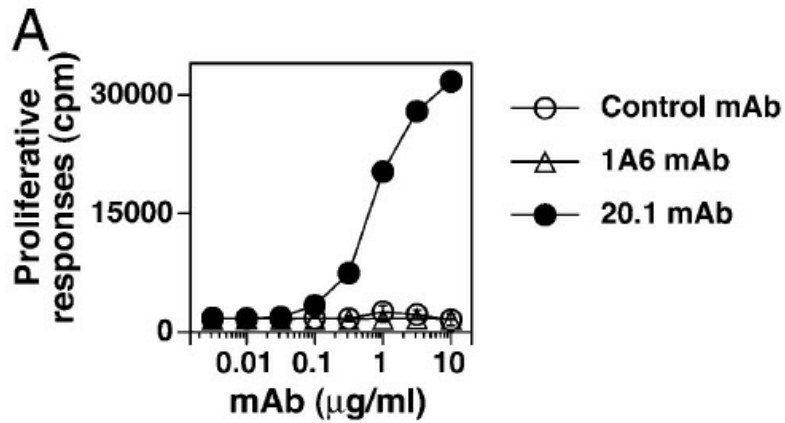


Figure from citation: Vg2Vd2 T cells proliferate in response to the 20.1 but not the 1A6 mAb, although both are specific for BTN3. The 12G12 Vg2Vd2 T cell clone was cultured with control IgG1 mAb, BTN3A2 (1A6) mAb, or 20.1 mAb in the presence of mitomycin C-treated Va2 cells. The cells were pulsed with [<sup>3</sup>H]thymidine after 24 h and harvested 18 h later. [View Citation](#)