

Product datasheet for **TA500728**

L1CAM Mouse Monoclonal Antibody [Clone ID: OTI2A6]

Product data:

Product Type:	Primary Antibodies
Clone Name:	OTI2A6
Applications:	FC, IF, IP, WB
Recommended Dilution:	WB 1:1000, IF 1:100, Flow 1:100, IP 2-4ug/mg
Reactivity:	Human, Mouse, Rat
Host:	Mouse
Isotype:	IgG1
Clonality:	Monoclonal
Immunogen:	Full-length human recombinant protein of human L1CAM (NP_000416) produced in HEK293T cell.
Formulation:	PBS (pH 7.3) containing 1% BSA, 50% glycerol and 0.02% sodium azide.
Concentration:	0.97 mg/ml
Purification:	Purified from mouse ascites fluids or tissue culture supernatant by affinity chromatography (protein A/G)
Conjugation:	Unconjugated
Storage:	Store at -20°C as received.
Stability:	Stable for 12 months from date of receipt.
Predicted Protein Size:	140.0 kDa
Gene Name:	L1 cell adhesion molecule
Database Link:	NP_000416 Entrez Gene 16728 Mouse Entrez Gene 50687 Rat Entrez Gene 3897 Human P32004



[View online »](#)

Background:

The protein encoded by this gene is an axonal glycoprotein belonging to the immunoglobulin supergene family. The ectodomain, consisting of several immunoglobulin-like domains and fibronectin-like repeats (type III), is linked via a single transmembrane sequence to a conserved cytoplasmic domain. This cell adhesion molecule plays an important role in nervous system development, including neuronal migration and differentiation. Mutations in the gene cause three X-linked neurological syndromes known by the acronym CRASH (corpus callosum hypoplasia, retardation, aphasia, spastic paraplegia and hydrocephalus). Alternative splicing of a neuron-specific exon is thought to be functionally relevant.

Synonyms:

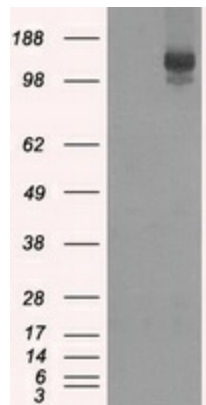
CAML1; CD171; HSAS; HSAS1; MASA; MIC5; N-CAM-L1; N-CAML1; NCAM-L1; S10; SPG1

Protein Families:

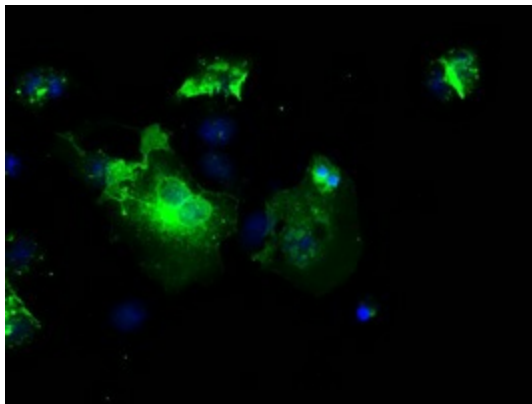
Druggable Genome, ES Cell Differentiation/IPS, Transmembrane

Protein Pathways:

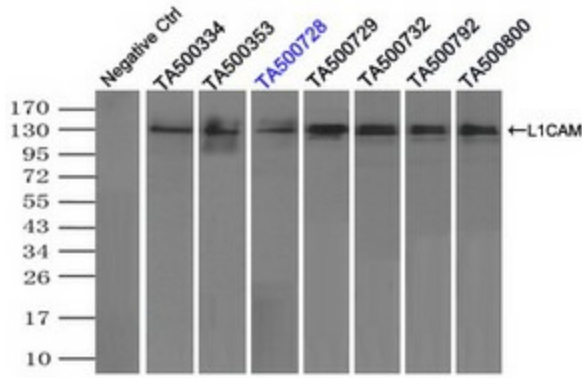
Axon guidance, Cell adhesion molecules (CAMs)

Product images:


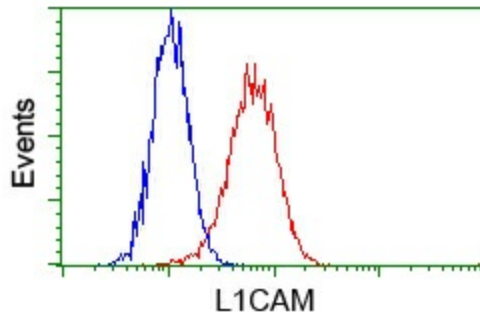
HEK293T cells were transfected with the pCMV6-ENTRY control (Cat# [PS100001], Left lane) or pCMV6-ENTRY L1CAM (Cat# [RC211601], Right lane) cDNA for 48 hrs and lysed. Equivalent amounts of cell lysates (5 ug per lane) were separated by SDS-PAGE and immunoblotted with anti-L1CAM (Cat# TA500728). Positive lysates [LY400150] (100ug) and [LC400150] (20ug) can be purchased separately from OriGene.



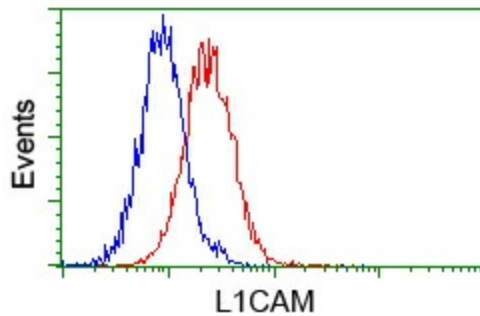
Anti-L1CAM mouse monoclonal antibody (TA500728) immunofluorescent staining of COS7 cells transiently transfected by pCMV6-ENTRY L1CAM ([RC211601]).



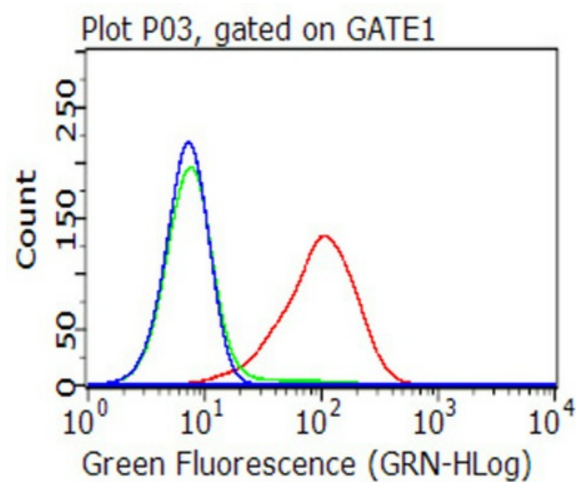
Immunoprecipitation of L1CAM by using TrueMab monoclonal anti-L1CAM antibody (Negative control: IP without adding anti-L1CAM antibody). For each experiment, 500ul of DDK tagged L1CAM overexpression lysates (at 1:5 dilution with HEK293T lysate), 2ug of anti-L1CAM antibody and 20ul (0.1mg) of goat anti-mouse conjugated magnetic beads were mixed and incubated overnight. After extensive wash to remove any non-specific binding, the immunoprecipitated products were analyzed with rabbit anti-DDK polyclonal antibody.



Flow cytometric analysis of HeLa cells, using anti-L1CAM antibody (TA500728), (Red) compared to a nonspecific negative control antibody (TA50011) (Blue).



Flow cytometric analysis of Jurkat cells, using anti-L1CAM antibody (TA500728), (Red) compared to a nonspecific negative control antibody (TA50011) (Blue).



Flow cytometric analysis of living A375 cells, using anti-L1CAM antibody (TA500728, Red), compared to an isotype control (green), and a PBS control (blue) (1:100).