

Product datasheet for **TA500726BM**

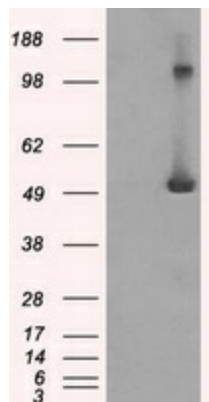
IFIT3 Mouse Monoclonal Antibody (HRP conjugated) [Clone ID: OTI1G1]

Product data:

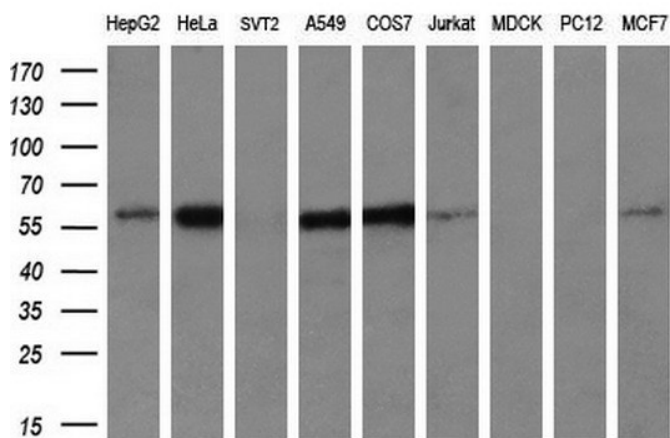
Product Type:	Primary Antibodies
Clone Name:	OTI1G1
Applications:	FC, IF, WB
Recommended Dilution:	WB 1:2000, IF 1:100, Flow 1:100
Reactivity:	Human
Host:	Mouse
Isotype:	IgG1
Clonality:	Monoclonal
Immunogen:	Full length human recombinant protein of human IFIT3 (NP_001540) produced in HEK293T cell.
Formulation:	PBS (pH 7.3) containing 1% BSA, 50% glycerol.
Concentration:	0.5 mg/ml
Purification:	Purified from mouse ascites fluids or tissue culture supernatant by affinity chromatography (protein A/G)
Conjugation:	HRP
Storage:	Store at -20°C as received.
Stability:	Stable for 12 months from date of receipt.
Predicted Protein Size:	56.0 kDa
Gene Name:	interferon induced protein with tetratricopeptide repeats 3
Database Link:	NP_001540 Entrez Gene 3437 Human O14879
Synonyms:	CIG-49; cig41; GARG-49; IFI60; IFIT4; IRG2; ISG60; P60; RIG-G



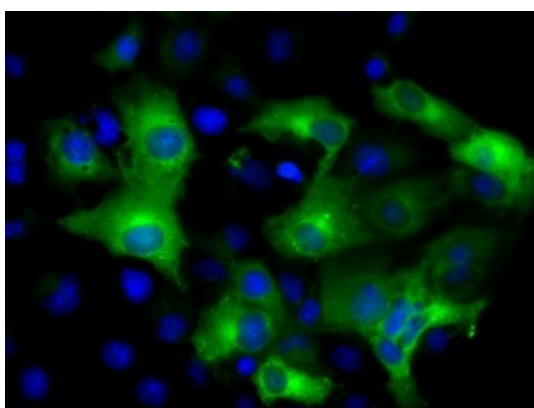
[View online »](#)

Product images:


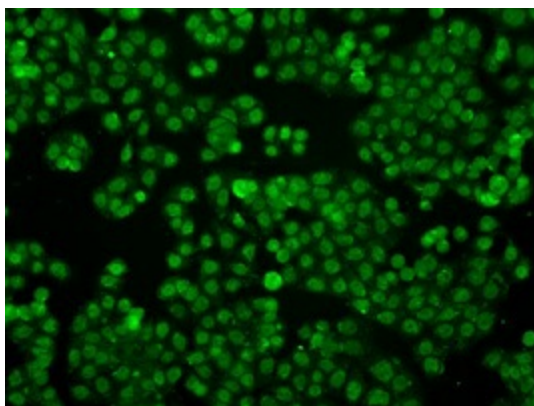
HEK293T cells were transfected with the pCMV6-ENTRY control (Cat# [PS100001], Left lane) or pCMV6-ENTRY IFIT3 (Cat# [RC200610], Right lane) cDNA for 48 hrs and lysed. Equivalent amounts of cell lysates (5 ug per lane) were separated by SDS-PAGE and immunoblotted with anti-IFIT3 (Cat# [TA500726]). Positive lysates [LY400593] (100ug) and [LC400593] (20ug) can be purchased separately from OriGene.



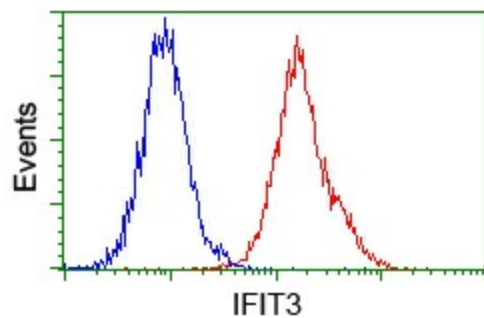
Western blot analysis of extracts (35ug) from 9 different cell lines by using anti-IFIT3 monoclonal antibody at 1:200 dilution. (HepG2: human; HeLa: human; SVT2: mouse; A549: human; COS7: monkey; Jurkat: human; MDCK: canine; PC12: rat; MCF7: human)



Anti-IFIT3 mouse monoclonal antibody ([TA500726]) immunofluorescent staining of COS7 cells transiently transfected by pCMV6-ENTRY IFIT3 ([RC200610]).



Immunofluorescent staining of HT29 cells using anti-IFIT3 mouse monoclonal antibody (TA500726).



Flow cytometric analysis of Jurkat cells, using anti-IFIT3 antibody (TA500726), (Red) compared to a nonspecific negative control antibody (TA50011) (Blue).