

## Product datasheet for **TA500726**

### IFIT3 Mouse Monoclonal Antibody [Clone ID: OTI1G1]

#### Product data:

|                         |   |
|-------------------------|---|
| Product Type:           | Primary Antibodies  |
| Clone Name:             | OTI1G1  |
| Applications:           | FC, IF, WB  |
| Recommended Dilution:   | WB 1:2000, IF 1:100, Flow 1:100   |
| Reactivity:             | Human   |
| Host:                   | Mouse   |
| Isotype:                | IgG1  |
| Clonality:              | Monoclonal  |
| Immunogen:              | Full length human recombinant protein of human IFIT3 (NP_001540) produced in HEK293T cell.                |
| Formulation:            | PBS (pH 7.3) containing 1% BSA, 50% glycerol and 0.02% sodium azide.                                      |
| Concentration:          | 1 mg/ml   |
| Purification:           | Purified from mouse ascites fluids or tissue culture supernatant by affinity chromatography (protein A/G) |
| Conjugation:            | Unconjugated  |
| Storage:                | Store at -20°C as received.   |
| Stability:              | Stable for 12 months from date of receipt.  |
| Predicted Protein Size: | 56.0 kDa  |
| Gene Name:              | interferon induced protein with tetratricopeptide repeats 3   |
| Database Link:          | <a href="#">NP_001540</a><br><a href="#">Entrez Gene 3437 Human</a><br><a href="#">O14879</a>             |
| Synonyms:               | CIG-49; cig41; GARG-49; IFI60; IFIT4; IRG2; ISG60; P60; RIG-G   |



[View online »](#)

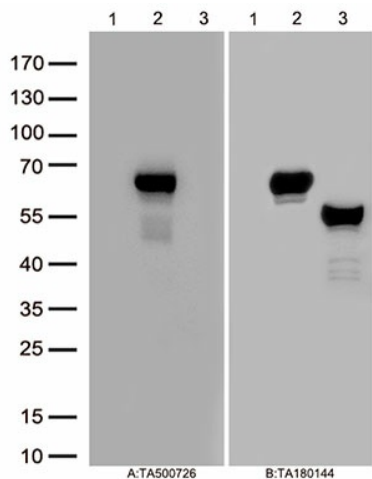
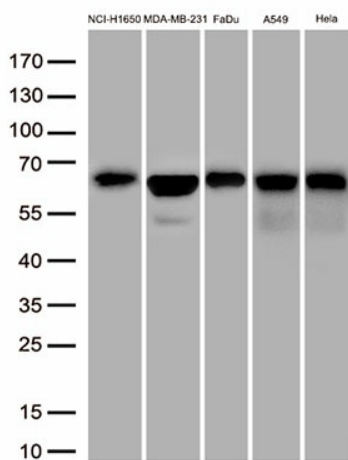
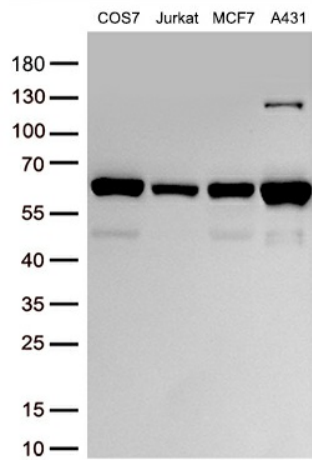
**Product images:**


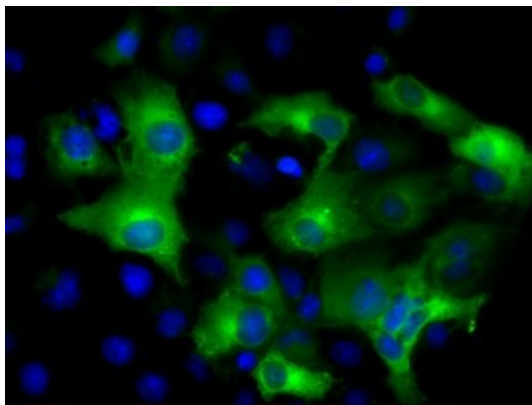
Figure A, Western blot analysis of overexpressed lysates(25ug per lane) from HEK293T cells transfected with empty plasmid ([PS100001], lane 1) , human IFIT3 plasmid ([RC200610], lane 2), mouse IFIT3 plasmid ([MR206340], lane 3) using anti-IFIT3 antibody TA500726 (1:1000). Figure B, Western blot analysis of the same samples as figure A with anti-DDK antibody ([TA180144], 1:1000)



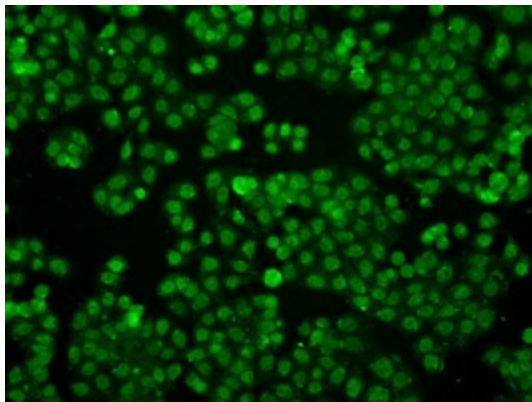
Western blot analysis of extracts (50ug per lane) from 5 cell lines lysates by using anti-IFIT3 monoclonal antibody(TA500726, 1:1000)



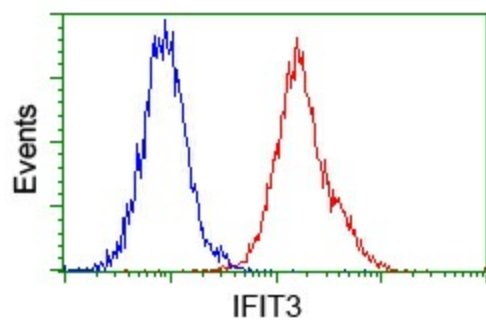
Western blot analysis of extracts (30ug per lane) from 4 cell lines lysates by using anti-IFIT3 monoclonal antibody(TA500726, 1:500)



Anti-IFIT3 mouse monoclonal antibody (TA500726) immunofluorescent staining of COS7 cells transiently transfected by pCMV6-ENTRY IFIT3 ([RC200610]).



Immunofluorescent staining of HT29 cells using anti-IFIT3 mouse monoclonal antibody (TA500726).



Flow cytometric analysis of Jurkat cells, using anti-IFIT3 antibody (TA500726), (Red) compared to a nonspecific negative control antibody (TA50011) (Blue).