

Product datasheet for **TA500718AM**

Prolactin (PRL) Mouse Monoclonal Antibody (Biotin conjugated) [Clone ID: OTI9D12]

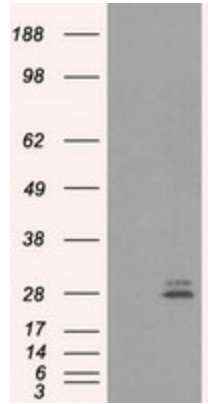
Product data:

Product Type:	Primary Antibodies
Clone Name:	OTI9D12
Applications:	FC, IF, WB
Recommended Dilution:	WB 1:1000, IF 1:50~100, FLOW 1:100
Reactivity:	Human
Host:	Mouse
Isotype:	IgG2b
Clonality:	Monoclonal
Immunogen:	Full length human recombinant protein of human PRL (NP_000939) produced in HEK293T cell.
Formulation:	PBS (pH 7.3) containing 1% BSA, 50% glycerol and 0.02% sodium azide.
Concentration:	0.5 mg/ml
Purification:	Purified from mouse ascites fluids or tissue culture supernatant by affinity chromatography (protein A/G)
Conjugation:	Biotin
Storage:	Store at -20°C as received.
Stability:	Stable for 12 months from date of receipt.
Predicted Protein Size:	25.7 kDa
Gene Name:	prolactin
Database Link:	NP_000939 Entrez Gene 5617 Human P01236
Synonyms:	GHA1
Protein Families:	Druggable Genome, Secreted Protein
Protein Pathways:	Cytokine-cytokine receptor interaction, Jak-STAT signaling pathway, Neuroactive ligand-receptor interaction

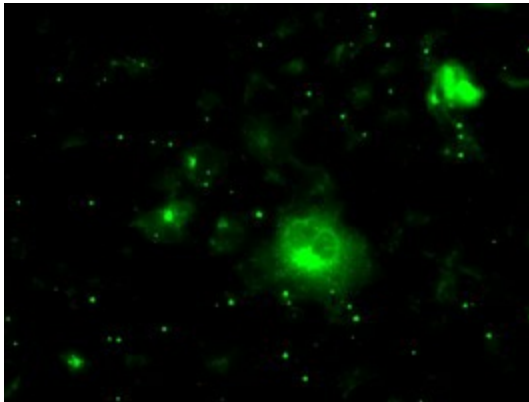


[View online »](#)

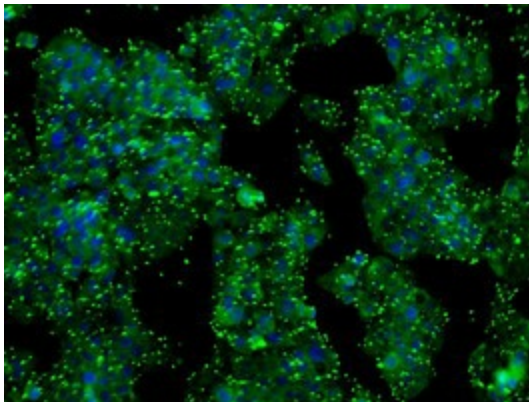
Product images:



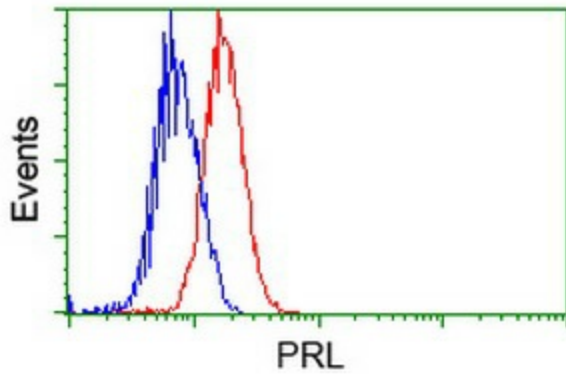
HEK293T cells were transfected with the pCMV6-ENTRY control (Left lane) or pCMV6-ENTRY PRL ([RC205627], Right lane) cDNA for 48 hrs and lysed. Equivalent amounts of cell lysates (5 ug per lane) were separated by SDS-PAGE and immunoblotted with anti-PRL. Positive lysates [LY424443] (100ug) and [LC424443] (20ug) can be purchased separately from OriGene.



Anti-PRL mouse monoclonal antibody ([TA500718]) immunofluorescent staining of COS7 cells transiently transfected by pCMV6-ENTRY PRL ([RC205627]).



Immunofluorescent staining of HepG2 cells using anti-PRL mouse monoclonal antibody ([TA500718]).



Flow cytometric Analysis of Jurkat cells, using anti-PRL antibody ([TA500718]), (Red), compared to a nonspecific negative control antibody, (Blue).