

Product datasheet for **TA500716**

ID3 Mouse Monoclonal Antibody [Clone ID: OTI15F4]

Product data:

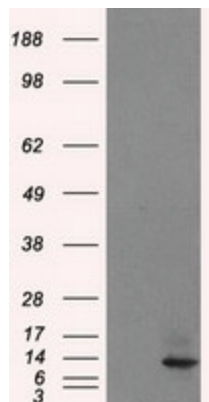
Product Type:	Primary Antibodies
Clone Name:	OTI15F4
Applications:	FC, IF, IHC, WB
Recommended Dilution:	IHC 1:100~400, WB: 1:200
Reactivity:	Human, Mouse, Rat
Host:	Mouse
Isotype:	IgG1
Clonality:	Monoclonal
Immunogen:	Full length human recombinant protein of human ID3 (NP_002158) produced in HEK293T cell.
Formulation:	PBS (pH 7.3) containing 1% BSA, 50% glycerol and 0.02% sodium azide.
Concentration:	0.59 mg/ml
Purification:	Purified from mouse ascites fluids or tissue culture supernatant by affinity chromatography (protein A/G)
Conjugation:	Unconjugated
Storage:	Store at -20°C as received.
Stability:	Stable for 12 months from date of receipt.
Predicted Protein Size:	12.8 kDa
Gene Name:	inhibitor of DNA binding 3, HLH protein
Database Link:	NP_002158 Entrez Gene 3399 Human Q02535
Background:	Members of the ID family of helix-loop-helix (HLH) proteins lack a basic DNA-binding domain and inhibit transcription through formation of nonfunctional dimers that are incapable of binding to DNA. [supplied by OMIM]
Synonyms:	bHLHb25; HEIR-1
Protein Families:	Druggable Genome, ES Cell Differentiation/IPS, Transcription Factors



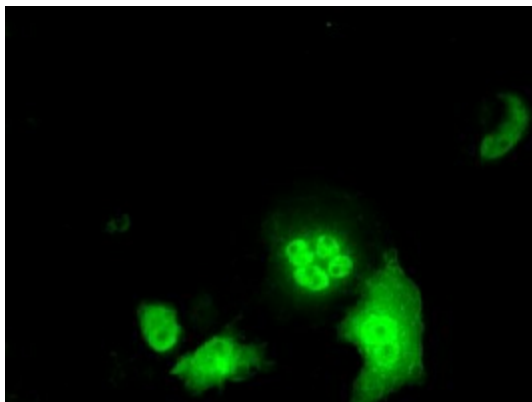
[View online »](#)

Protein Pathways: TGF-beta signaling pathway

Product images:



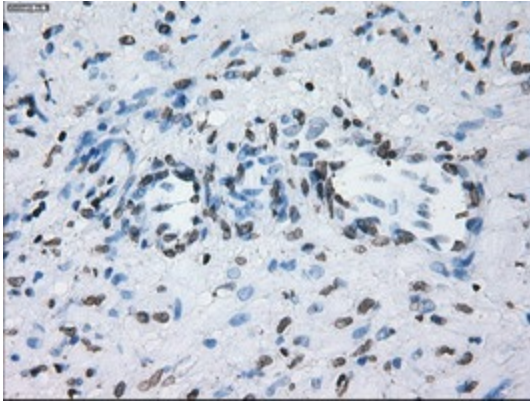
HEK293T cells were transfected with the pCMV6-ENTRY control (Left lane) or pCMV6-ENTRY ID3 ([RC200583], Right lane) cDNA for 48 hrs and lysed. Equivalent amounts of cell lysates (5 ug per lane) were separated by SDS-PAGE and immunoblotted with anti-ID3. Positive lysates [LY419492] (100ug) and [LC419492] (20ug) can be purchased separately from OriGene.



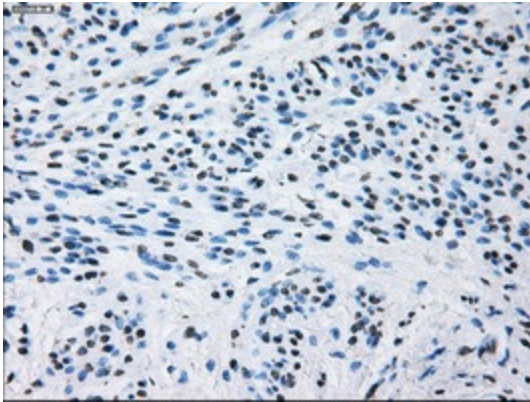
Anti-ID3 mouse monoclonal antibody (TA500716) immunofluorescent staining of COS7 cells transiently transfected by pCMV6-ENTRY ID3 ([RC200583]).



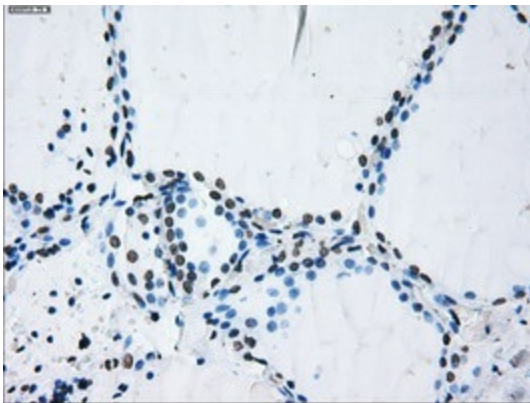
Immunohistochemical staining of paraffin-embedded Human bladder tissue within the normal limits using anti-ID3 mouse monoclonal antibody. (Heat-induced epitope retrieval by 10mM citric buffer, pH6.0, 100°C for 10min, TA500716)



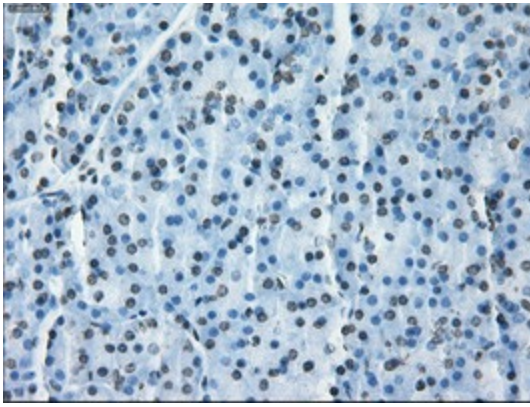
Immunohistochemical staining of paraffin-embedded Human prostate tissue within the normal limits using anti-ID3 mouse monoclonal antibody. (Heat-induced epitope retrieval by 10mM citric buffer, pH6.0, 100°C for 10min, TA500716)



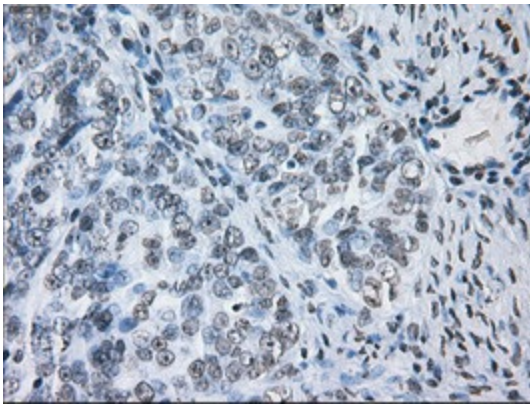
Immunohistochemical staining of paraffin-embedded Human endometrium tissue within the normal limits using anti-ID3 mouse monoclonal antibody. (Heat-induced epitope retrieval by 10mM citric buffer, pH6.0, 100°C for 10min, TA500716)



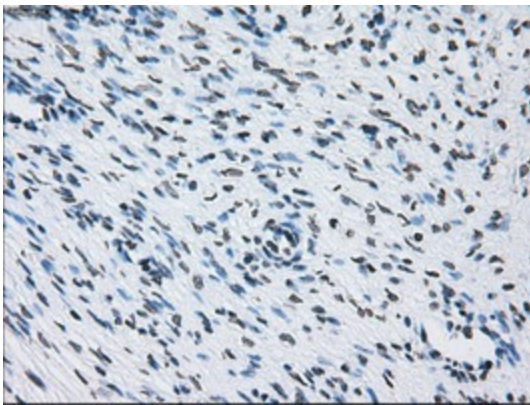
Immunohistochemical staining of paraffin-embedded Human thyroid tissue within the normal limits using anti-ID3 mouse monoclonal antibody. (Heat-induced epitope retrieval by 10mM citric buffer, pH6.0, 100°C for 10min, TA500716)



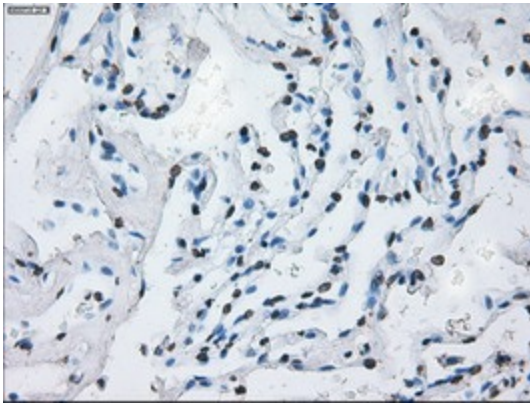
Immunohistochemical staining of paraffin-embedded Human pancreas tissue within the normal limits using anti-ID3 mouse monoclonal antibody. (Heat-induced epitope retrieval by 10mM citric buffer, pH6.0, 100°C for 10min, TA500716)



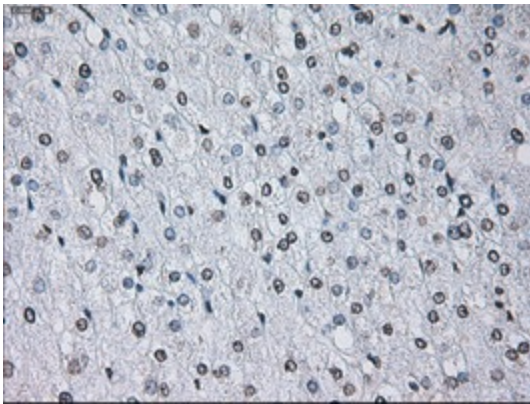
Immunohistochemical staining of paraffin-embedded Adenocarcinoma of Human ovary tissue using anti-ID3 mouse monoclonal antibody. (Heat-induced epitope retrieval by 10mM citric buffer, pH6.0, 100°C for 10min, TA500716)



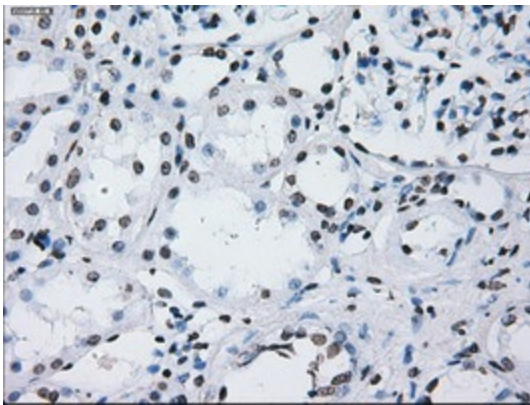
Immunohistochemical staining of paraffin-embedded Human Ovary tissue within the normal limits using anti-ID3 mouse monoclonal antibody. (Heat-induced epitope retrieval by 10mM citric buffer, pH6.0, 100°C for 10min, TA500716)



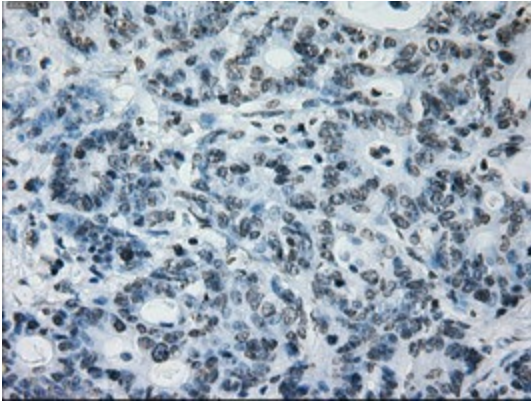
Immunohistochemical staining of paraffin-embedded Human lung tissue within the normal limits using anti-ID3 mouse monoclonal antibody. (Heat-induced epitope retrieval by 10mM citric buffer, pH6.0, 100°C for 10min, TA500716)



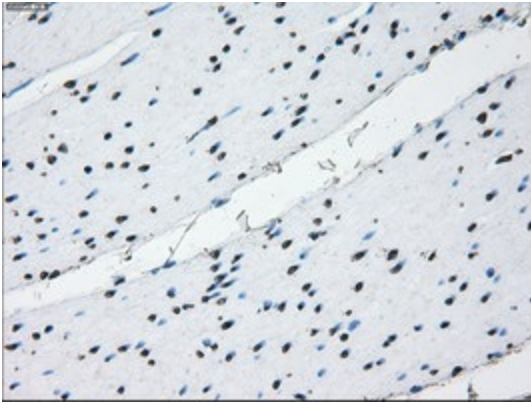
Immunohistochemical staining of paraffin-embedded Human liver tissue within the normal limits using anti-ID3 mouse monoclonal antibody. (Heat-induced epitope retrieval by 10mM citric buffer, pH6.0, 100°C for 10min, TA500716)



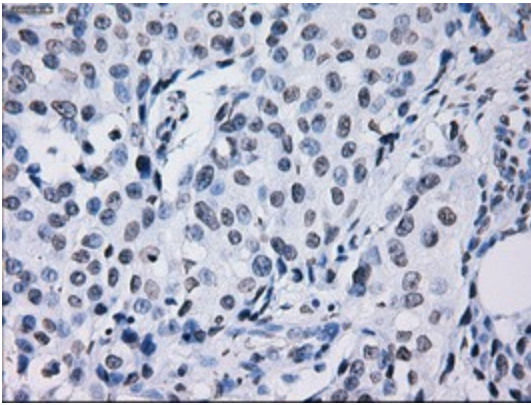
Immunohistochemical staining of paraffin-embedded Human Kidney tissue within the normal limits using anti-ID3 mouse monoclonal antibody. (Heat-induced epitope retrieval by 10mM citric buffer, pH6.0, 100°C for 10min, TA500716)



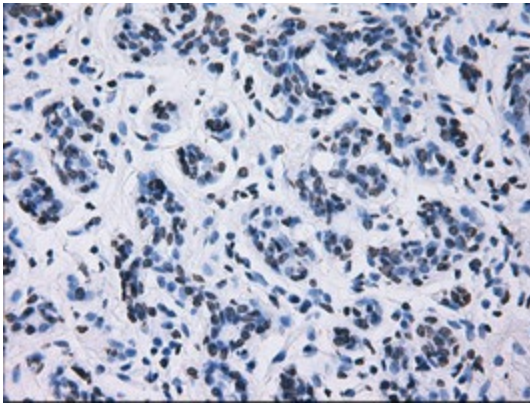
Immunohistochemical staining of paraffin-embedded Adenocarcinoma of Human colon tissue using anti-ID3 mouse monoclonal antibody. (Heat-induced epitope retrieval by 10mM citric buffer, pH6.0, 100°C for 10min, TA500716)



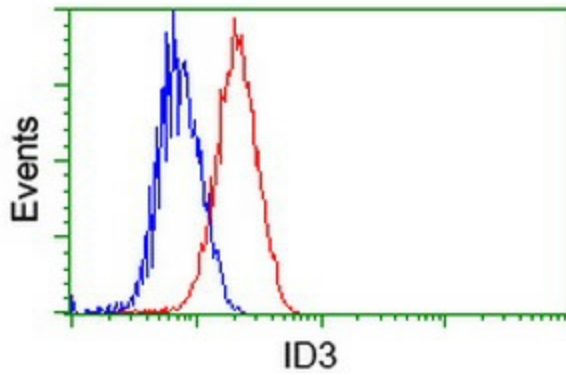
Immunohistochemical staining of paraffin-embedded Human colon tissue within the normal limits using anti-ID3 mouse monoclonal antibody. (Heat-induced epitope retrieval by 10mM citric buffer, pH6.0, 100°C for 10min, TA500716)



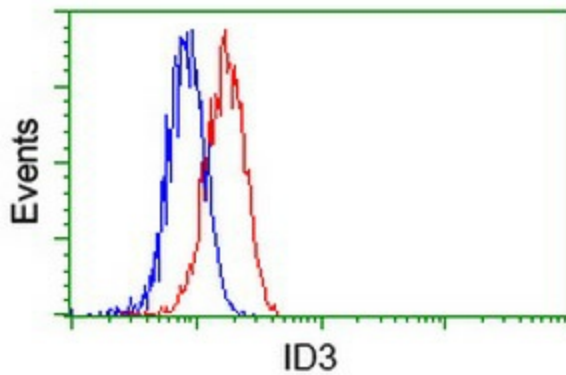
Immunohistochemical staining of paraffin-embedded Adenocarcinoma of Human breast tissue using anti-ID3 mouse monoclonal antibody. (Heat-induced epitope retrieval by 10mM citric buffer, pH6.0, 100°C for 10min, TA500716)



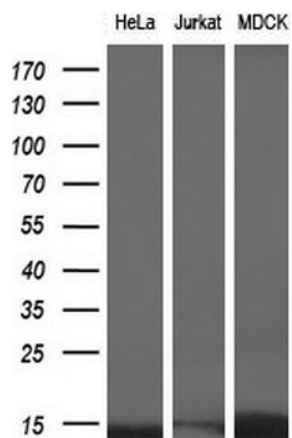
Immunohistochemical staining of paraffin-embedded Human breast tissue within the normal limits using anti-ID3 mouse monoclonal antibody. (Heat-induced epitope retrieval by 10mM citric buffer, pH6.0, 100°C for 10min, TA500716)



Flow cytometric Analysis of Jurkat cells, using anti-ID3 antibody (TA500716), (Red), compared to a nonspecific negative control antibody, (Blue).



Flow cytometric Analysis of HeLa cells, using anti-ID3 antibody (TA500716), (Red), compared to a nonspecific negative control antibody, (Blue).



Western blot analysis of extracts (10ug) from 3 different cell lines by using anti-ID3 monoclonal antibody (1:200).