

Product datasheet for **TA500701M**

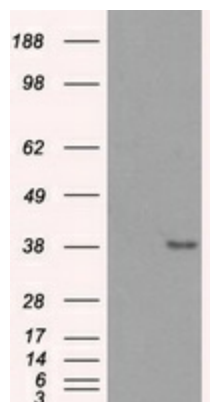
Sorbitol Dehydrogenase (SORD) Mouse Monoclonal Antibody [Clone ID: OTI9E7]

Product data:

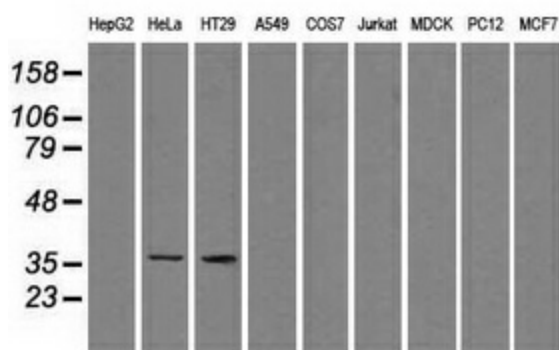
Product Type:	Primary Antibodies
Clone Name:	OTI9E7
Applications:	FC, IF, WB
Recommended Dilution:	WB 1:1000, IF 1:100, Flow 1:100
Reactivity:	Human
Host:	Mouse
Isotype:	IgG2a
Clonality:	Monoclonal
Immunogen:	Full length human recombinant protein of human SORD (NP_003095) produced in HEK293T cell.
Formulation:	PBS (pH 7.3) containing 1% BSA, 50% glycerol and 0.02% sodium azide.
Concentration:	0.9 mg/ml
Purification:	Purified from mouse ascites fluids or tissue culture supernatant by affinity chromatography (protein A/G)
Conjugation:	Unconjugated
Storage:	Store at -20°C as received.
Stability:	Stable for 12 months from date of receipt.
Predicted Protein Size:	38.3 kDa
Gene Name:	sorbitol dehydrogenase
Database Link:	NP_003095 Entrez Gene 6652 Human Q00796
Synonyms:	HEL-S-95n; SORD1
Protein Families:	Druggable Genome
Protein Pathways:	Fructose and mannose metabolism, Metabolic pathways

[View online »](#)

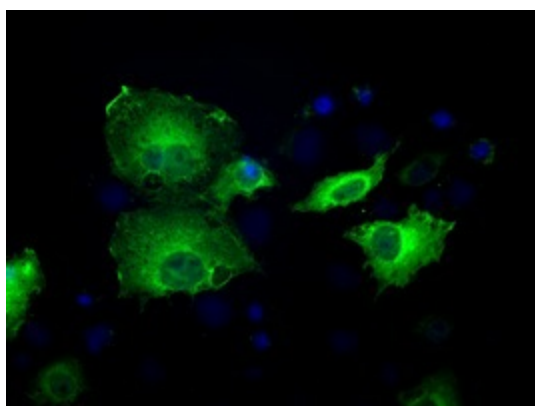
Product images:



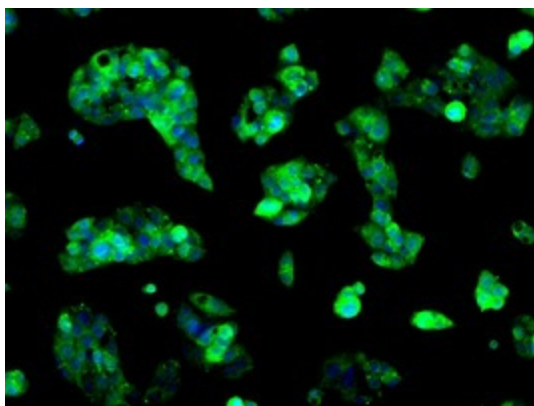
HEK293T cells were transfected with the pCMV6-ENTRY control (Cat# [PS100001], Left lane) or pCMV6-ENTRY SORD (Cat# [RC200415], Right lane) cDNA for 48 hrs and lysed. Equivalent amounts of cell lysates (5 ug per lane) were separated by SDS-PAGE and immunoblotted with anti-SORD (Cat# [TA500701]). Positive lysates [LY401082] (100ug) and [LC401082] (20ug) can be purchased separately from OriGene.



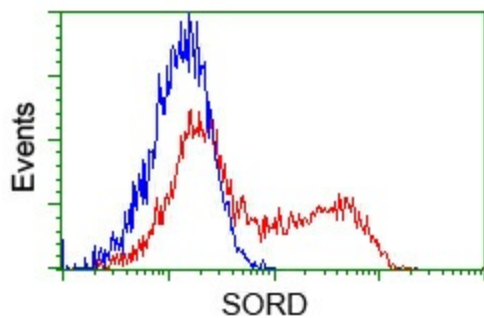
Western blot analysis of extracts (35ug) from 9 different cell lines by using anti-SORD monoclonal antibody.



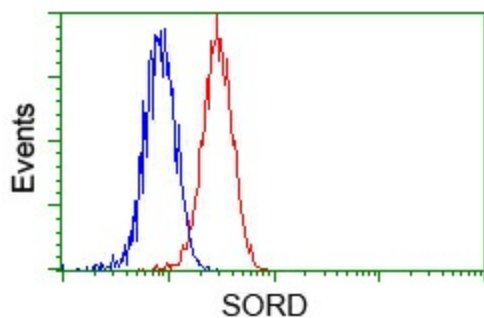
Anti-SORD mouse monoclonal antibody ([TA500701]) immunofluorescent staining of COS7 cells transiently transfected by pCMV6-ENTRY SORD ([RC200415]).



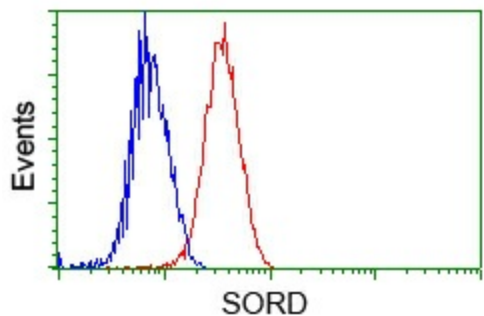
Immunofluorescent staining of HepG2 cells using anti-SORD mouse monoclonal antibody (TA500701).



HEK293T cells transfected with either pCMV6-ENTRY SORD ([RC200415]) (Red) or empty vector control plasmid (Blue) were immunostained with anti-SORD mouse monoclonal (TA500701), Dilution 1:1,000, and then analyzed by flow cytometry.



Flow cytometric analysis of Hela cells, using anti-SORD antibody (TA500701), (Red) compared to a nonspecific negative control antibody (TA50011) (Blue).



Flow cytometric analysis of Jurkat cells, using anti-SORD antibody (TA500701), (Red) compared to a nonspecific negative control antibody (TA50011) (Blue).