

Product datasheet for **TA500685BM**

BCKDH kinase (BCKDK) Mouse Monoclonal Antibody (HRP conjugated) [Clone ID: OTI11C9]

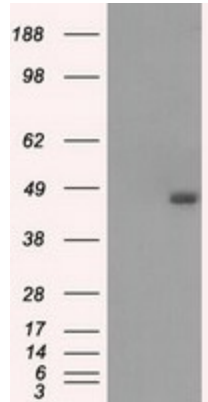
Product data:

| | |
|--------------------------------|--|
| Product Type: | Primary Antibodies |
| Clone Name: | OTI11C9 |
| Applications: | IF, IHC, WB |
| Recommended Dilution: | WB 1:2000, IHC 1:50, IF 1:100 |
| Reactivity: | Human, Mouse, Rat |
| Host: | Mouse |
| Isotype: | IgG1 |
| Clonality: | Monoclonal |
| Immunogen: | Full length human recombinant protein of human BCKDK (NP_005872) produced in HEK293T cell. |
| Formulation: | PBS (pH 7.3) containing 1% BSA, 50% glycerol. |
| Concentration: | 0.5 mg/ml |
| Purification: | Purified from mouse ascites fluids or tissue culture supernatant by affinity chromatography (protein A/G) |
| Conjugation: | HRP |
| Storage: | Store at -20°C as received. |
| Stability: | Stable for 12 months from date of receipt. |
| Predicted Protein Size: | 46.4 kDa |
| Gene Name: | branched chain keto acid dehydrogenase kinase |
| Database Link: | NP_005872 Entrez Gene 12041 Mouse Entrez Gene 29603 Rat Entrez Gene 10295 Human O14874 |
| Background: | Catalyzes the phosphorylation and inactivation of the branched-chain alpha-ketoacid dehydrogenase complex, the key regulatory enzyme of the valine, leucine and isoleucine catabolic pathways. Key enzyme that regulate the activity state of the BCKD complex . |
| Synonyms: | BCKDKD; BDK |
| Protein Families: | Druggable Genome, Protein Kinase |

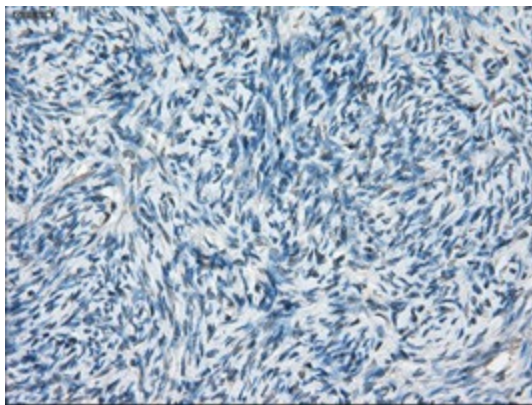


[View online »](#)

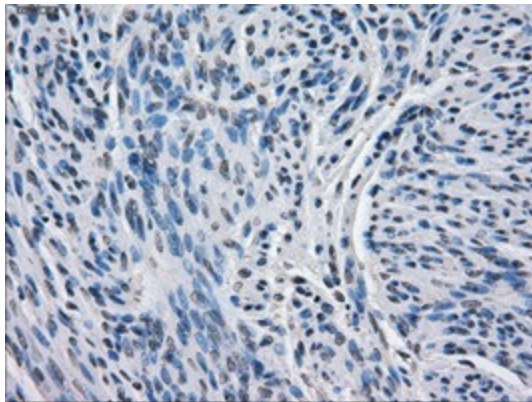
Product images:



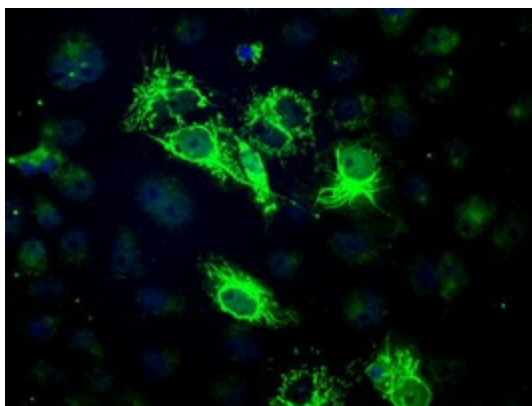
HEK293T cells were transfected with the pCMV6-ENTRY control (Cat# [PS100001], Left lane) or pCMV6-ENTRY BCKDK (Cat# [RC203601], Right lane) cDNA for 48 hrs and lysed. Equivalent amounts of cell lysates (5 ug per lane) were separated by SDS-PAGE and immunoblotted with anti-BCKDK(Cat# [TA500685]). Positive lysates [LY401780] (100ug) and [LC401780] (20ug) can be purchased separately from OriGene.



Immunohistochemical staining of paraffin-embedded Human Ovary tissue within the normal limits using anti-BCKDK mouse monoclonal antibody. (Heat-induced epitope retrieval by 10mM citric buffer, pH6.0, 100°C for 10min, [TA500685])



Immunohistochemical staining of paraffin-embedded Human endometrium tissue within the normal limits using anti-BCKDK mouse monoclonal antibody. (Heat-induced epitope retrieval by 10mM citric buffer, pH6.0, 100°C for 10min, [TA500685])



Anti-BCKDK mouse monoclonal antibody ([TA500685]) immunofluorescent staining of COS7 cells transiently transfected by pCMV6-ENTRY BCKDK ([RC203601]).