

## Product datasheet for **TA500674AM**

### ILF2 Mouse Monoclonal Antibody (Biotin conjugated) [Clone ID: OTI6F1]

#### Product data:

Product Type:	Primary Antibodies
Clone Name:	OTI6F1
Applications:	IF, IHC, WB
Recommended Dilution:	WB 1:500, IHC 1:50, IF 1:100
Reactivity:	Human, Dog, Mouse
Host:	Mouse
Isotype:	IgG1
Clonality:	Monoclonal
Immunogen:	Full-length protein expressed in 293T cell transfected with human ILF2 expression vector
Formulation:	PBS (pH 7.3) containing 1% BSA, 50% glycerol and 0.02% sodium azide.
Concentration:	0.5 mg/ml
Purification:	Purified from mouse ascites fluids or tissue culture supernatant by affinity chromatography (protein A/G)
Conjugation:	Biotin
Storage:	Store at -20°C as received.
Stability:	Stable for 12 months from date of receipt.
Predicted Protein Size:	43.1 kDa
Gene Name:	interleukin enhancer binding factor 2
Database Link:	<a href="#">NP_004506</a> <a href="#">Entrez Gene 67781 Mouse</a> <a href="#">Entrez Gene 480139 Dog</a> <a href="#">Entrez Gene 3608 Human</a> <a href="#">Q12905</a>

**Background:** Nuclear factor of activated T-cells (NFAT) is a transcription factor required for T-cell expression of the interleukin 2 gene. NFAT binds to a sequence in the interleukin 2 gene enhancer known as the antigen receptor response element 2. In addition, NFAT can bind RNA and is an essential component for encapsidation and protein priming of hepatitis B viral polymerase. NFAT is a heterodimer of 45 kDa and 90 kDa proteins, the smaller of which is the product of this gene. The encoded protein binds strongly to the 90 kDa protein and stimulates its ability to enhance gene expression.

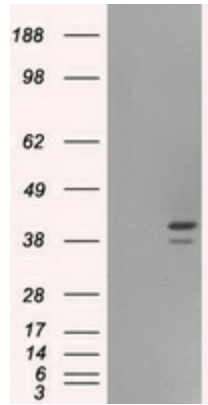


[View online »](#)

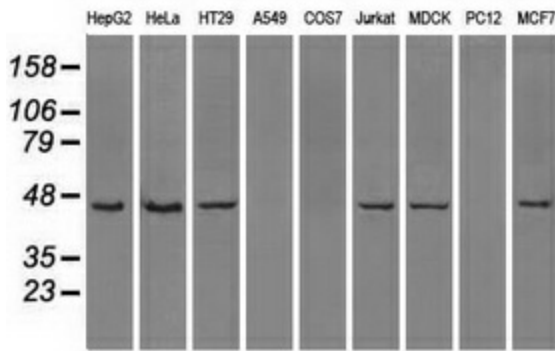
**Synonyms:** NF45; PRO3063

**Protein Families:** Druggable Genome, Transcription Factors

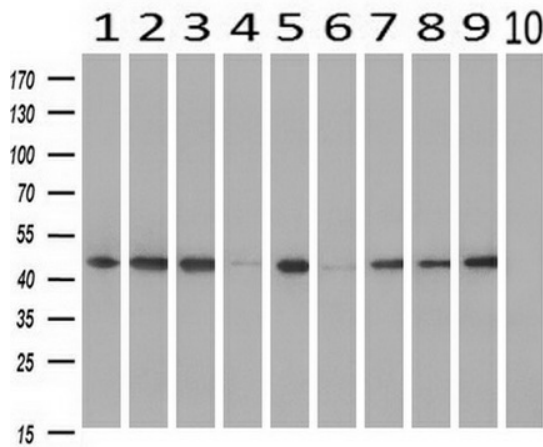
**Product images:**



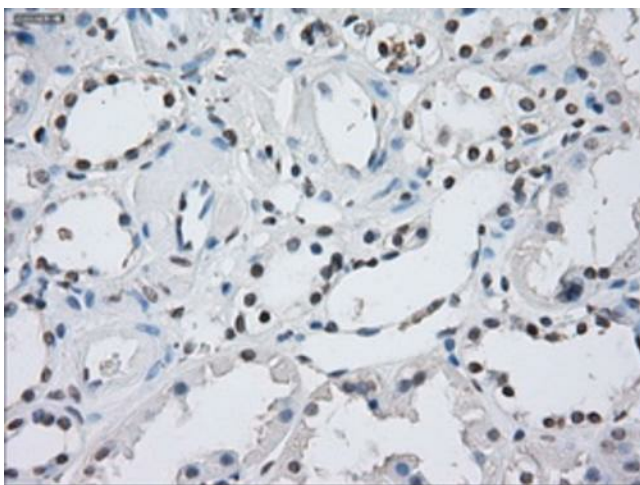
HEK293T cells were transfected with the pCMV6-ENTRY control (Cat# [PS100001], Left lane) or pCMV6-ENTRY ILF2 (Cat# [RC201751], Right lane) cDNA for 48 hrs and lysed. Equivalent amounts of cell lysates (5 ug per lane) were separated by SDS-PAGE and immunoblotted with anti-ILF2 (Cat# [TA500674]). Positive lysates [LY401437] (100ug) and [LC401437] (20ug) can be purchased separately from OriGene.



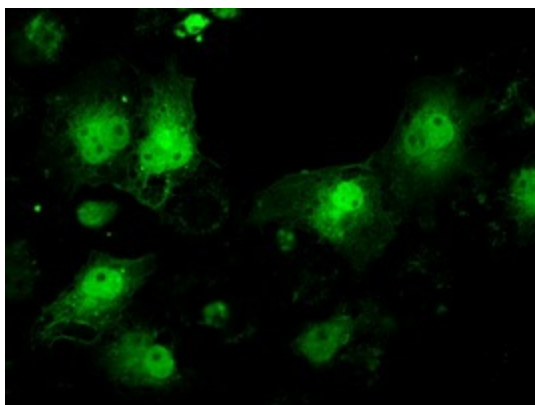
Western blot analysis of extracts (35ug) from 9 different cell lines by using anti-ILF2 monoclonal antibody.



Western blot analysis of extracts (10ug) from 10 Human tissue by using anti-ILF2 monoclonal antibody at 1:500 (1: Testis; 2: Omentum; 3: Uterus; 4: Breast; 5: Brain; 6: Liver; 7: Ovary; 8: Thyroid gland; 9: colon; 10: spleen).



Immunohistochemical staining of paraffin-embedded Kidney tissue within the normal limits using anti-ILF2 mouse monoclonal antibody. (Heat-induced epitope retrieval by 10mM citric buffer, pH6.0, 100°C for 10min, [TA500674], Dilution 1:50)



Anti-ILF2 mouse monoclonal antibody ([TA500674]) immunofluorescent staining of COS7 cells transiently transfected by pCMV6-ENTRY ILF2 ([RC201751]).