

Product datasheet for **TA500665BM**

Leukotriene A4 hydrolase (LTA4H) Mouse Monoclonal Antibody (HRP conjugated) [Clone ID: OTI8F4]

Product data:

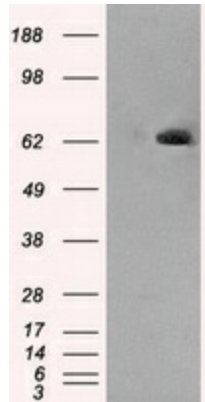
| | |
|-------------------------|---|
| Product Type: | Primary Antibodies |
| Clone Name: | OTI8F4 |
| Applications: | IF, IHC, IP, WB |
| Recommended Dilution: | WB 1:2000, IHC 1:50, IP 2-4ug/mg |
| Reactivity: | Human, Dog, Rat, Mouse |
| Host: | Mouse |
| Isotype: | IgG2a |
| Clonality: | Monoclonal |
| Immunogen: | Full-length protein expressed in 293T cell transfected with human LTA4H expression vector |
| Formulation: | PBS (pH 7.3) containing 1% BSA, 50% glycerol. |
| Concentration: | 0.5 mg/ml |
| Purification: | Purified from mouse ascites fluids or tissue culture supernatant by affinity chromatography (protein A/G) |
| Conjugation: | HRP |
| Storage: | Store at -20°C as received. |
| Stability: | Stable for 12 months from date of receipt. |
| Predicted Protein Size: | 69.3 kDa |
| Gene Name: | leukotriene A4 hydrolase |
| Database Link: | NP_000886 Entrez Gene 16993 MouseEntrez Gene 299732 RatEntrez Gene 482611 DogEntrez Gene 4048 Human P09960 |
| Background: | Hydrolyzes an epoxide moiety of leukotriene A4 (LTA-4) to form leukotriene B4 (LTB-4). The enzyme also has some peptidase activity. |
| Synonyms: | leukotriene A4 hydrolase |
| Protein Families: | Druggable Genome, Protease |



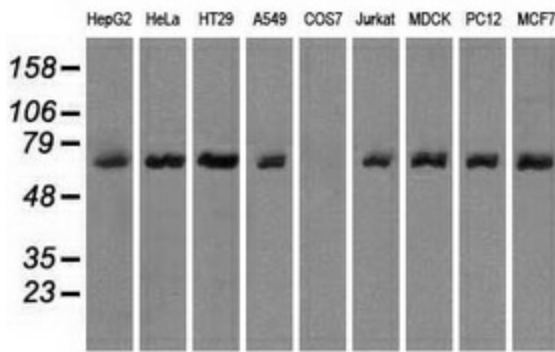
[View online »](#)

Protein Pathways: Arachidonic acid metabolism, Metabolic pathways

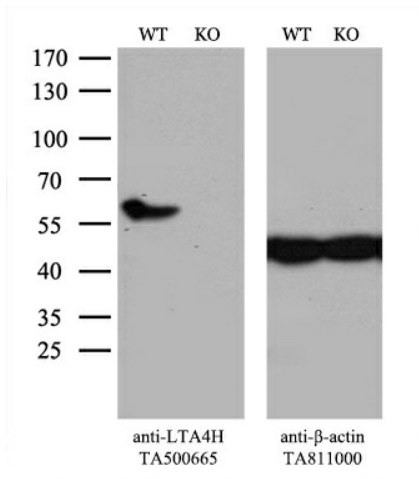
Product images:



HEK293T cells were transfected with the pCMV6-ENTRY control (Left lane) or pCMV6-ENTRY LTA4H [RC207617], Right lane) cDNA for 48 hrs and lysed. Equivalent amounts of cell lysates (5 ug per lane) were separated by SDS-PAGE and immunoblotted with anti-LTA4H. Positive lysates [LY424467] (100ug) and [LC424467] (20ug) can be purchased separately from OriGene.



Western blot analysis of extracts (35ug) from 9 different cell lines by using anti-LTA4H monoclonal antibody.



Equivalent amounts of cell lysates (10 ug per lane) of wild-type 293T cells (WT, Cat# LC810293T) and LTA4H-Knockout 293T cells (KO, Cat# [LC812368]) were separated by SDS-PAGE and immunoblotted with anti-LTA4H monoclonal antibody [TA500665], (1:500). Then the blotted membrane was stripped and reprobed with anti- β -actin antibody ([TA811000]) as a loading control.



Immunohistochemical staining of paraffin-embedded pancreas tissue within the normal limits using anti-LTA4H mouse monoclonal antibody. (Heat-induced epitope retrieval by 10mM citric buffer, pH6.0, 100°C for 10min, [TA500665], Dilution 1:50)

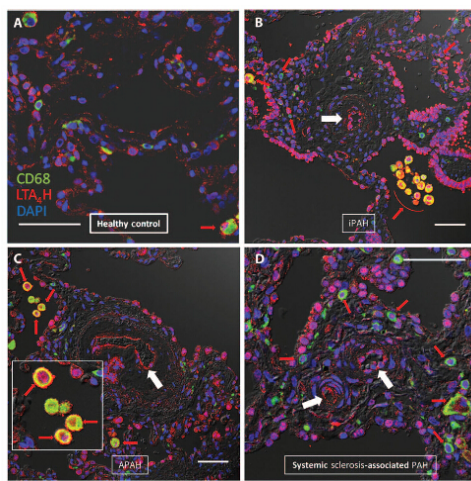


Figure from citation: Immunofluorescence of LTA4H protein level by using anti-LTA4H antibody in human lung tissues. [View Citation](#)

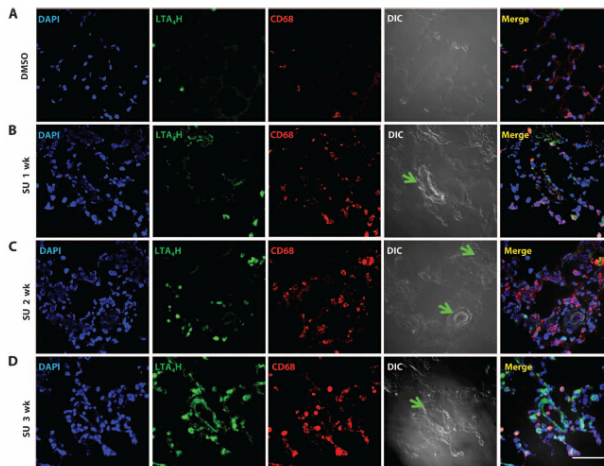
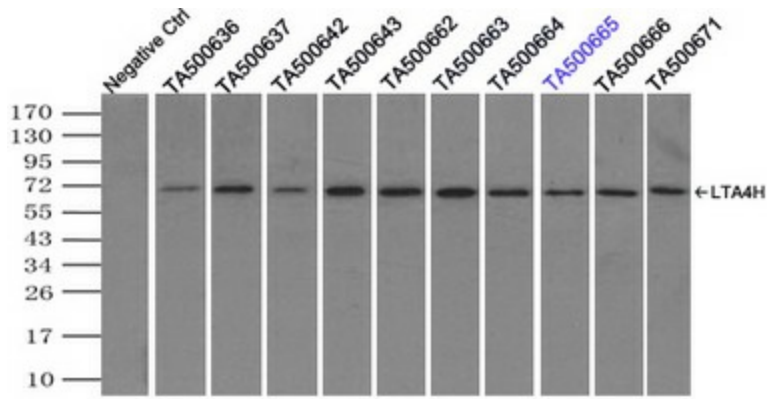


Figure from citation: Immunofluorescence of LTA4H protein level by using anti-LTA4H antibody in human lung tissues. [View Citation](#)



Immunoprecipitation of LTA4H by using TrueMab monoclonal anti-LTA4H antibody (Negative control: IP without adding anti-LTA4H antibody). For each experiment, 500ul of DDK tagged LTA4H overexpression lysates (at 1:5 dilution with HEK293T lysate), 2ug of ant-LTA4H antibody and 20ul (0.1 mg) of goat anti-mouse conjugated magnetic beads were mixed and incubated overnight. After extensive wash to remove any non-specific binding, the immuno-precipitated products were analyzed with rabbit anti-DDK polyclonal antibody.