

Product datasheet for **TA500664BM**

Leukotriene A4 hydrolase (LTA4H) Mouse Monoclonal Antibody (HRP conjugated) [Clone ID: OTI3C11]

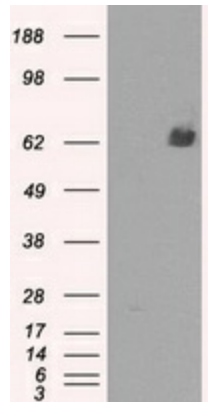
Product data:

Product Type:	Primary Antibodies
Clone Name:	OTI3C11
Applications:	IHC, WB
Recommended Dilution:	WB 1:2000, IHC 1:50
Reactivity:	Human, Mouse, Rat
Host:	Mouse
Isotype:	IgG2b
Clonality:	Monoclonal
Immunogen:	Full-length protein expressed in 293T cell transfected with human LTA4H expression vector
Formulation:	PBS (pH 7.3) containing 1% BSA, 50% glycerol.
Concentration:	0.5 mg/ml
Purification:	Purified from mouse ascites fluids or tissue culture supernatant by affinity chromatography (protein A/G)
Conjugation:	HRP
Storage:	Store at -20°C as received.
Stability:	Stable for 12 months from date of receipt.
Predicted Protein Size:	69.3 kDa
Gene Name:	leukotriene A4 hydrolase
Database Link:	NP_000886 Entrez Gene 16993 MouseEntrez Gene 299732 RatEntrez Gene 4048 Human P09960
Background:	Hydrolyzes an epoxide moiety of leukotriene A4 (LTA-4) to form leukotriene B4 (LTB-4). The enzyme also has some peptidase activity.
Synonyms:	leukotriene A4 hydrolase
Protein Families:	Druggable Genome, Protease
Protein Pathways:	Arachidonic acid metabolism, Metabolic pathways

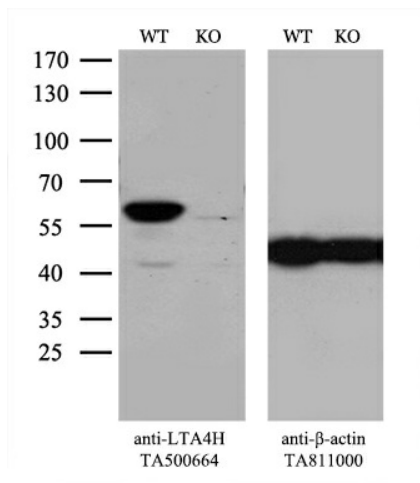


[View online »](#)

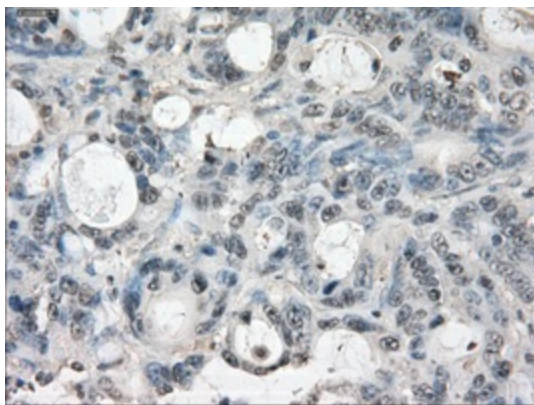
Product images:



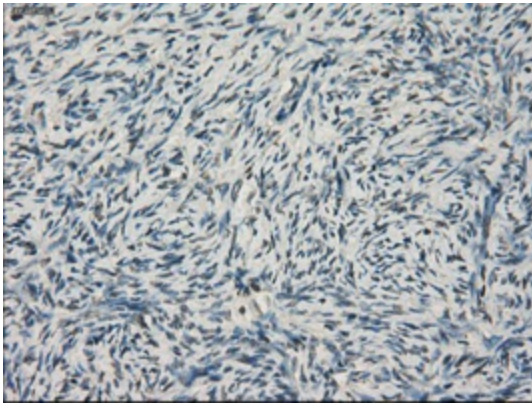
HEK293T cells were transfected with the pCMV6-ENTRY control (Left lane) or pCMV6-ENTRY LTA4H [RC207617], Right lane) cDNA for 48 hrs and lysed. Equivalent amounts of cell lysates (5 ug per lane) were separated by SDS-PAGE and immunoblotted with anti-LTA4H. Positive lysates [LY424467] (100ug) and [LC424467] (20ug) can be purchased separately from OriGene.



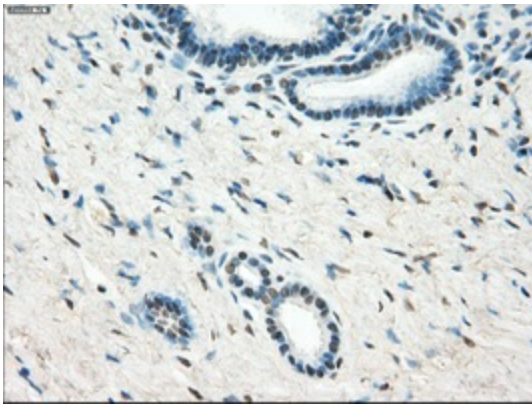
Equivalent amounts of cell lysates (10 ug per lane) of wild-type 293T cells (WT, Cat# LC810293T) and LTA4H-Knockout 293T cells (KO, Cat# [LC812368]) were separated by SDS-PAGE and immunoblotted with anti-LTA4H monoclonal antibody [TA500664], (1:500). Then the blotted membrane was stripped and reprobed with anti- β -actin antibody ([TA811000]) as a loading control.



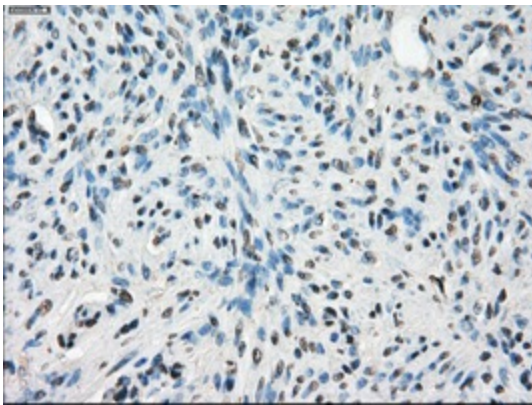
Immunohistochemical staining of paraffin-embedded Adenocarcinoma of colon tissue using anti-LTA4H mouse monoclonal antibody. (Heat-induced epitope retrieval by 10mM citric buffer, pH6.0, 100°C for 10min, [TA500664], Dilution 1:50)



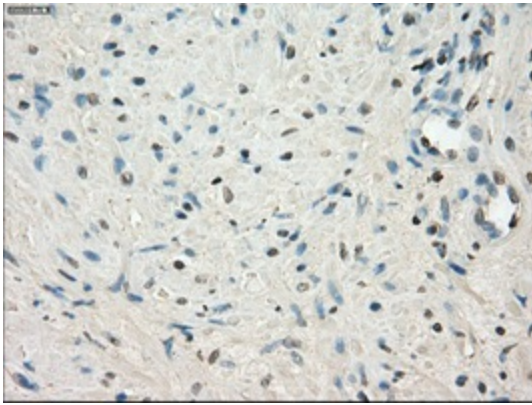
Immunohistochemical staining of paraffin-embedded Ovary tissue within the normal limits using anti-LTA4H mouse monoclonal antibody. (Heat-induced epitope retrieval by 10mM citric buffer, pH6.0, 100°C for 10min, [TA500664], Dilution 1:50)



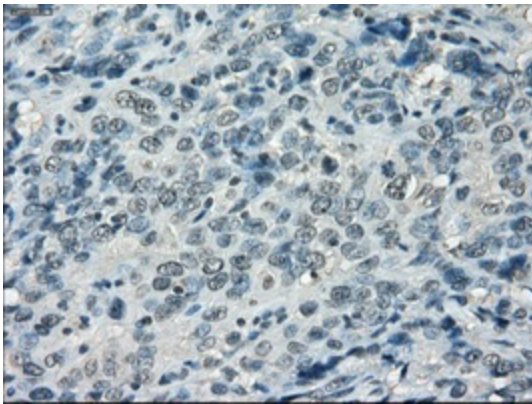
Immunohistochemical staining of paraffin-embedded pancreas tissue within the normal limits using anti-LTA4H mouse monoclonal antibody. (Heat-induced epitope retrieval by 10mM citric buffer, pH6.0, 100°C for 10min, [TA500664], Dilution 1:50)



Immunohistochemical staining of paraffin-embedded endometrium tissue within the normal limits using anti-LTA4H mouse monoclonal antibody. (Heat-induced epitope retrieval by 10mM citric buffer, pH6.0, 100°C for 10min, [TA500664], Dilution 1:50)



Immunohistochemical staining of paraffin-embedded prostate tissue within the normal limits using anti-LTA4H mouse monoclonal antibody. (Heat-induced epitope retrieval by 10mM citric buffer, pH6.0, 100°C for 10min, [TA500664], Dilution 1:50)



Immunohistochemical staining of paraffin-embedded Carcinoma of bladder tissue using anti-LTA4H mouse monoclonal antibody. (Heat-induced epitope retrieval by 10mM citric buffer, pH6.0, 100°C for 10min, [TA500664], Dilution 1:50)