

Product datasheet for **TA500664**

Leukotriene A4 hydrolase (LTA4H) Mouse Monoclonal Antibody [Clone ID: OTI3C11]

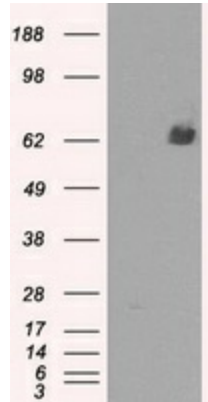
Product data:

| | |
|-------------------------|--|
| Product Type: | Primary Antibodies |
| Clone Name: | OTI3C11 |
| Applications: | IHC, WB |
| Recommended Dilution: | WB 1:2000, IHC 1:50 |
| Reactivity: | Human, Mouse, Rat |
| Host: | Mouse |
| Isotype: | IgG2b |
| Clonality: | Monoclonal |
| Immunogen: | Full-length protein expressed in 293T cell transfected with human LTA4H expression vector |
| Formulation: | PBS (pH 7.3) containing 1% BSA, 50% glycerol and 0.02% sodium azide. |
| Concentration: | 1.1 mg/ml |
| Purification: | Purified from mouse ascites fluids or tissue culture supernatant by affinity chromatography (protein A/G) |
| Conjugation: | Unconjugated |
| Storage: | Store at -20°C as received. |
| Stability: | Stable for 12 months from date of receipt. |
| Predicted Protein Size: | 69.3 kDa |
| Gene Name: | leukotriene A4 hydrolase |
| Database Link: | NP_000886 Entrez Gene 16993 Mouse Entrez Gene 299732 Rat Entrez Gene 4048 Human P09960 |
| Background: | Hydrolyzes an epoxide moiety of leukotriene A4 (LTA-4) to form leukotriene B4 (LTB-4). The enzyme also has some peptidase activity. |
| Synonyms: | leukotriene A4 hydrolase |
| Protein Families: | Druggable Genome, Protease |
| Protein Pathways: | Arachidonic acid metabolism, Metabolic pathways |

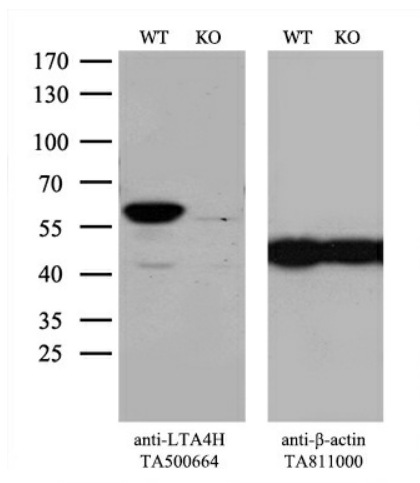


[View online »](#)

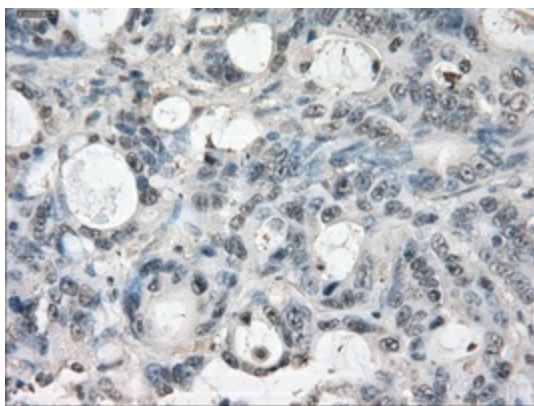
Product images:



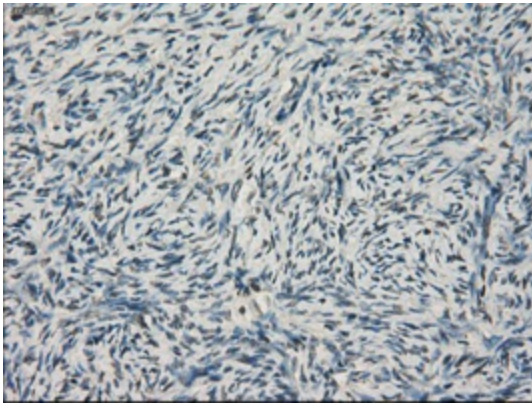
HEK293T cells were transfected with the pCMV6-ENTRY control (Left lane) or pCMV6-ENTRY LTA4H [RC207617], Right lane) cDNA for 48 hrs and lysed. Equivalent amounts of cell lysates (5 ug per lane) were separated by SDS-PAGE and immunoblotted with anti-LTA4H. Positive lysates [LY424467] (100ug) and [LC424467] (20ug) can be purchased separately from OriGene.



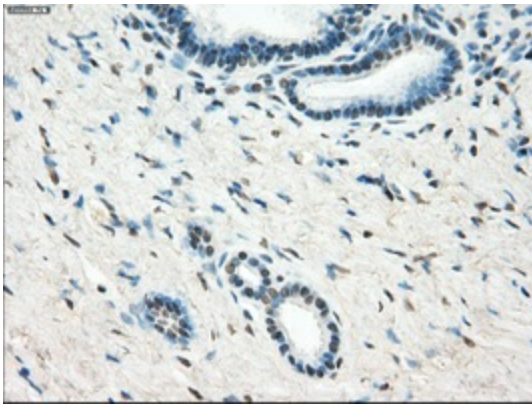
Equivalent amounts of cell lysates (10 ug per lane) of wild-type 293T cells (WT, Cat# LC810293T) and LTA4H-Knockout 293T cells (KO, Cat# [LC812368]) were separated by SDS-PAGE and immunoblotted with anti-LTA4H monoclonal antibody TA500664, (1:500). Then the blotted membrane was stripped and reprobed with anti- β -actin antibody ([TA811000]) as a loading control.



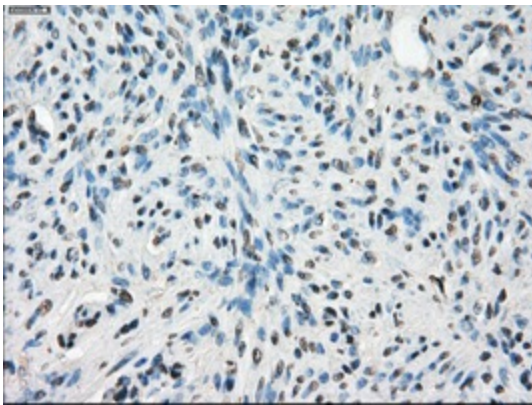
Immunohistochemical staining of paraffin-embedded Adenocarcinoma of colon tissue using anti-LTA4H mouse monoclonal antibody. (Heat-induced epitope retrieval by 10mM citric buffer, pH6.0, 100°C for 10min, TA500664, Dilution 1:50)



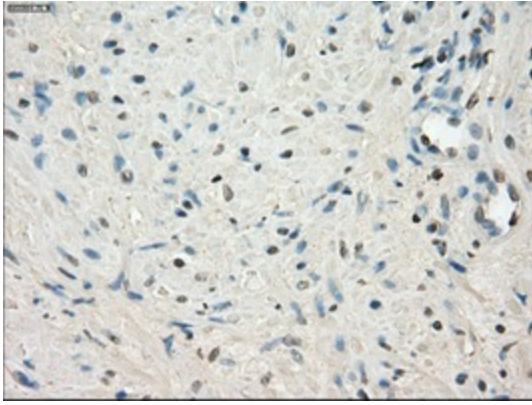
Immunohistochemical staining of paraffin-embedded Ovary tissue within the normal limits using anti-LTA4H mouse monoclonal antibody. (Heat-induced epitope retrieval by 10mM citric buffer, pH6.0, 100°C for 10min, TA500664, Dilution 1:50)



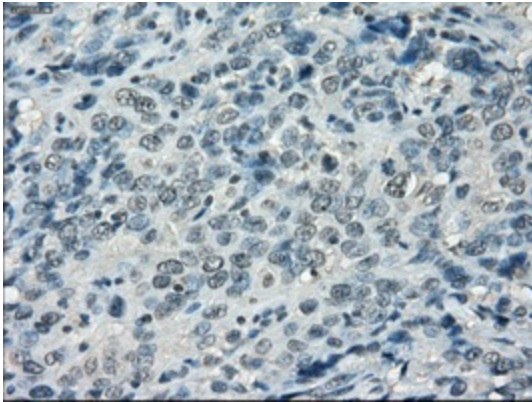
Immunohistochemical staining of paraffin-embedded pancreas tissue within the normal limits using anti-LTA4H mouse monoclonal antibody. (Heat-induced epitope retrieval by 10mM citric buffer, pH6.0, 100°C for 10min, TA500664, Dilution 1:50)



Immunohistochemical staining of paraffin-embedded endometrium tissue within the normal limits using anti-LTA4H mouse monoclonal antibody. (Heat-induced epitope retrieval by 10mM citric buffer, pH6.0, 100°C for 10min, TA500664, Dilution 1:50)



Immunohistochemical staining of paraffin-embedded prostate tissue within the normal limits using anti-LTA4H mouse monoclonal antibody. (Heat-induced epitope retrieval by 10mM citric buffer, pH6.0, 100°C for 10min, TA500664, Dilution 1:50)



Immunohistochemical staining of paraffin-embedded Carcinoma of bladder tissue using anti-LTA4H mouse monoclonal antibody. (Heat-induced epitope retrieval by 10mM citric buffer, pH6.0, 100°C for 10min, TA500664, Dilution 1:50)