

Product datasheet for **TA500663M**

Leukotriene A4 hydrolase (LTA4H) Mouse Monoclonal Antibody [Clone ID: OTI6B5]

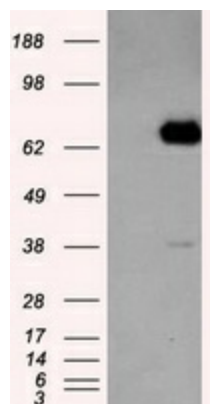
Product data:

Product Type:	Primary Antibodies
Clone Name:	OTI6B5
Applications:	FC, IHC, IP, WB
Recommended Dilution:	WB 1:2000, IHC 1:50, Flow 1:100, IP 2-4ug/mg
Reactivity:	Human, Mouse, Rat
Host:	Mouse
Isotype:	IgG2b
Clonality:	Monoclonal
Immunogen:	Full length human recombinant protein of human LTA4H (NP_000886) produced in HEK293T cell.
Formulation:	PBS (pH 7.3) containing 1% BSA, 50% glycerol and 0.02% sodium azide.
Concentration:	0.75 mg/ml
Purification:	Purified from mouse ascites fluids or tissue culture supernatant by affinity chromatography (protein A/G)
Conjugation:	Unconjugated
Storage:	Store at -20°C as received.
Stability:	Stable for 12 months from date of receipt.
Predicted Protein Size:	69.3 kDa
Gene Name:	leukotriene A4 hydrolase
Database Link:	NP_000886 Entrez Gene 16993 Mouse Entrez Gene 299732 Rat Entrez Gene 4048 Human P09960
Background:	Hydrolyzes an epoxide moiety of leukotriene A4 (LTA-4) to form leukotriene B4 (LTB-4). The enzyme also has some peptidase activity
Synonyms:	leukotriene A4 hydrolase
Protein Families:	Druggable Genome, Protease
Protein Pathways:	Arachidonic acid metabolism, Metabolic pathways

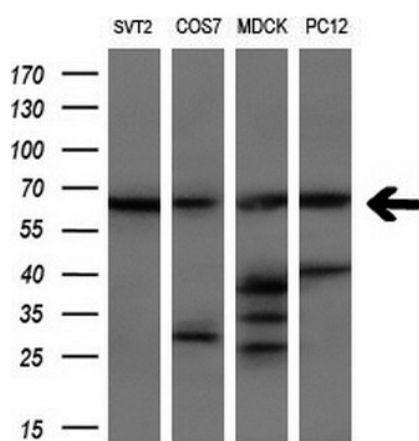


[View online »](#)

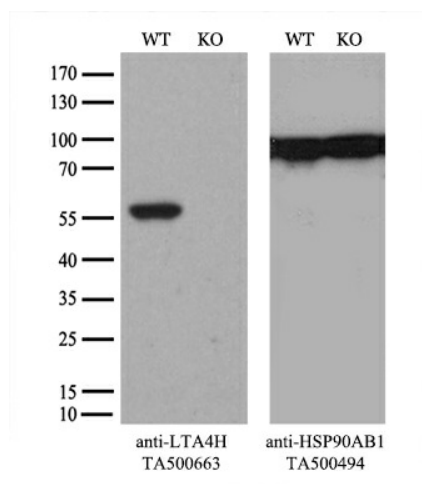
Product images:



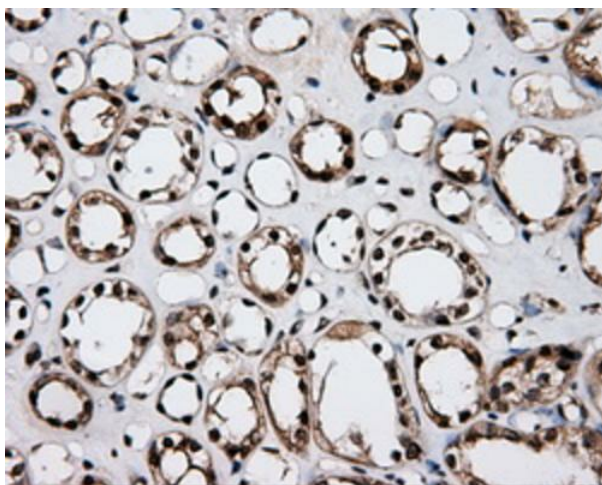
HEK293T cells were transfected with the pCMV6-ENTRY control (Left lane) or pCMV6-ENTRY LTA4H ([RC207617], Right lane) cDNA for 48 hrs and lysed. Equivalent amounts of cell lysates (5 ug per lane) were separated by SDS-PAGE and immunoblotted with anti-LTA4H. Positive lysates [LY424467] (100ug) and [LC424467] (20ug) can be purchased separately from OriGene.



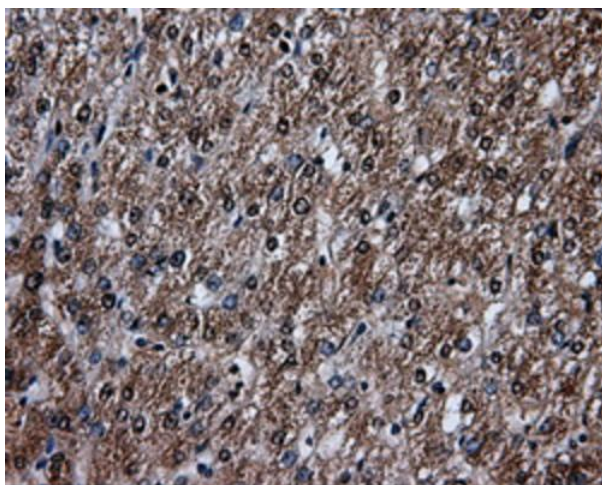
Western blot analysis of extracts (10ug) from 4 different cell lines by using anti-LTA4H monoclonal antibody (1:200).



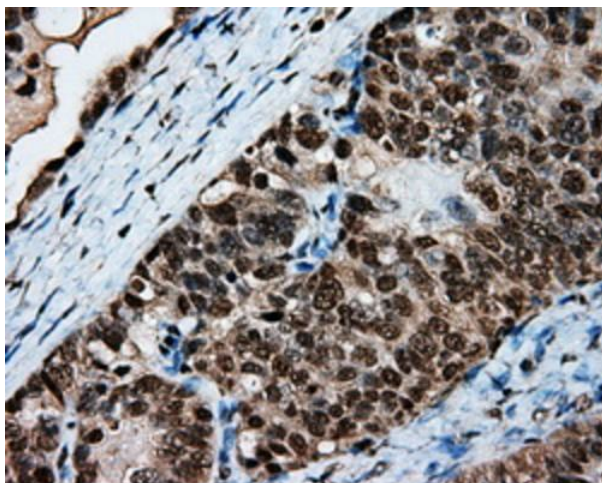
Equivalent amounts of cell lysates (10 ug per lane) of wild-type 293T cells (WT, Cat# LC810293T) and LTA4H-Knockout 293T cells (KO, Cat# [LC812368]) were separated by SDS-PAGE and immunoblotted with anti-LTA4H monoclonal antibody [TA500663], (1:500). Then the blotted membrane was stripped and reprobed with anti-HSP90AB1 antibody ([TA500494]) as a loading control.



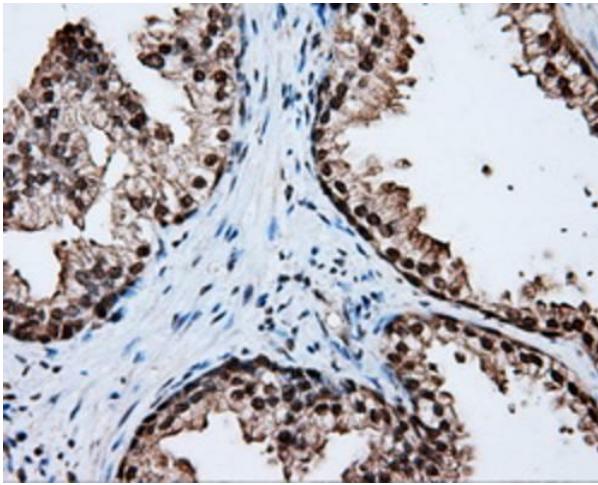
Immunohistochemical staining of paraffin-embedded Kidney tissue within the normal limits using anti-LTA4H mouse monoclonal antibody. Heat-induced epitope retrieval by EDTA solution buffer pH 8.0 at 120°C for 3 min.



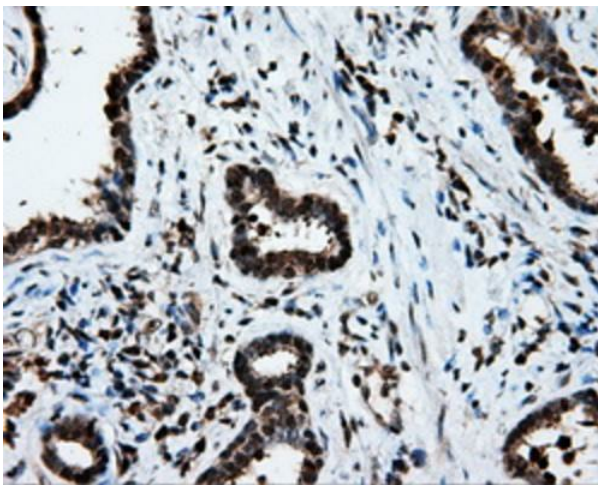
Immunohistochemical staining of paraffin-embedded liver tissue within the normal limits using anti-LTA4H mouse monoclonal antibody. Heat-induced epitope retrieval by EDTA solution buffer pH 8.0 at 120°C for 3 min.



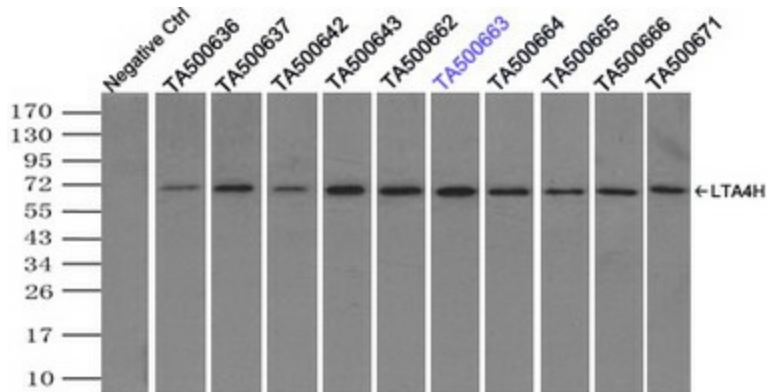
Immunohistochemical staining of paraffin-embedded Adenocarcinoma of ovary tissue using anti-LTA4H mouse monoclonal antibody. Heat-induced epitope retrieval by EDTA solution buffer pH 8.0 at 120°C for 3 min.



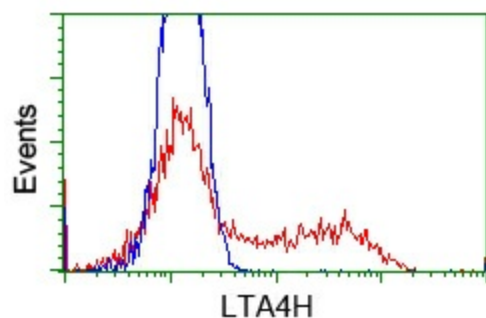
Immunohistochemical staining of paraffin-embedded prostate tissue within the normal limits using anti-LTA4H mouse monoclonal antibody. Heat-induced epitope retrieval by EDTA solution buffer pH 8.0 at 120°C for 3 min.



Immunohistochemical staining of paraffin-embedded Carcinoma of prostate tissue using anti-LTA4H mouse monoclonal antibody. Heat-induced epitope retrieval by EDTA solution buffer pH 8.0 at 120°C for 3 min.



Immunoprecipitation of LTA4H by using TrueMab monoclonal anti-LTA4H antibody (Negative control: IP without adding anti-LTA4H antibody). For each experiment, 500ul of DDK tagged LTA4H overexpression lysates (at 1:5 dilution with HEK293T lysate), 2ug of anti-LTA4H antibody and 20ul (0.1mg) of goat anti-mouse conjugated magnetic beads were mixed and incubated overnight. After extensive wash to remove any non-specific binding, the immuno-precipitated products were analyzed with rabbit anti-DDK polyclonal antibody.



HEK293T cells transfected with either pCMV6-ENTRY LTA4H ([RC207617]) (Red) or empty vector control plasmid (Blue) were immunostained with anti-LTA4H mouse monoclonal ([TA500663]), and then analyzed by flow cytometry.