

## Product datasheet for **TA500663AM**

### Leukotriene A4 hydrolase (LTA4H) Mouse Monoclonal Antibody (Biotin conjugated) [Clone ID: OTI6B5]

#### Product data:

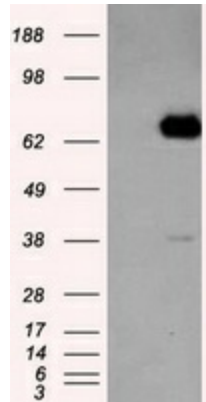
|                         |  |
|-------------------------|--|
| Product Type:           | Primary Antibodies   |
| Clone Name:             | OTI6B5   |
| Applications:           | FC, IHC, IP, WB  |
| Recommended Dilution:   | WB 1:2000, IHC 1:50, Flow 1:100, IP 2-4ug/mg   |
| Reactivity:             | Human, Mouse, Rat  |
| Host:                   | Mouse  |
| Isotype:                | IgG2b  |
| Clonality:              | Monoclonal   |
| Immunogen:              | Full length human recombinant protein of human LTA4H (NP_000886) produced in HEK293T cell.   |
| Formulation:            | PBS (pH 7.3) containing 1% BSA, 50% glycerol and 0.02% sodium azide.   |
| Concentration:          | 0.5 mg/ml  |
| Purification:           | Purified from mouse ascites fluids or tissue culture supernatant by affinity chromatography (protein A/G)  |
| Conjugation:            | Biotin   |
| Storage:                | Store at -20°C as received.  |
| Stability:              | Stable for 12 months from date of receipt.   |
| Predicted Protein Size: | 69.3 kDa   |
| Gene Name:              | leukotriene A4 hydrolase   |
| Database Link:          | <a href="#">NP_000886</a><br><a href="#">Entrez Gene 16993 Mouse</a> <a href="#">Entrez Gene 299732 Rat</a> <a href="#">Entrez Gene 4048 Human</a><br><a href="#">P09960</a> |
| Background:             | Hydrolyzes an epoxide moiety of leukotriene A4 (LTA-4) to form leukotriene B4 (LTB-4). The enzyme also has some peptidase activity   |
| Synonyms:               | leukotriene A4 hydrolase   |
| Protein Families:       | Druggable Genome, Protease   |



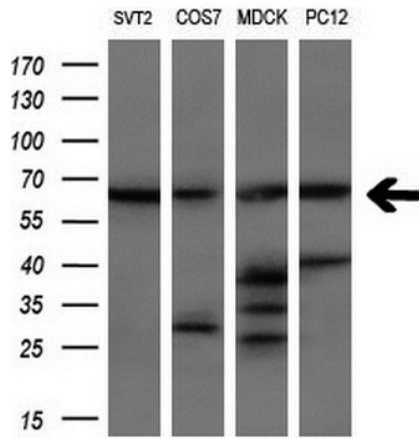
[View online »](#)

Protein Pathways: Arachidonic acid metabolism, Metabolic pathways

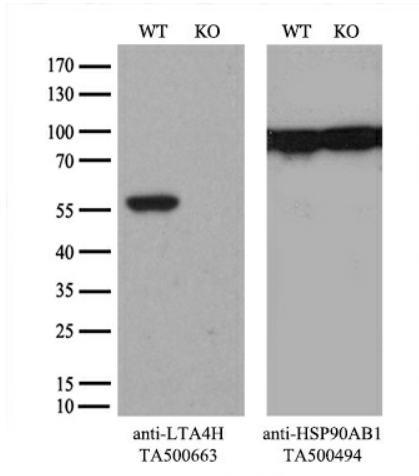
**Product images:**



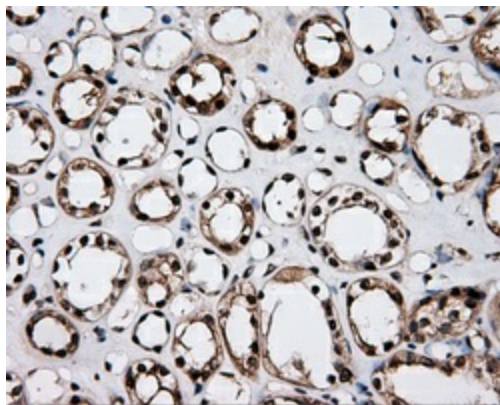
HEK293T cells were transfected with the pCMV6-ENTRY control (Left lane) or pCMV6-ENTRY LTA4H ([RC207617], Right lane) cDNA for 48 hrs and lysed. Equivalent amounts of cell lysates (5 ug per lane) were separated by SDS-PAGE and immunoblotted with anti-LTA4H. Positive lysates [LY424467] (100ug) and [LC424467] (20ug) can be purchased separately from OriGene.



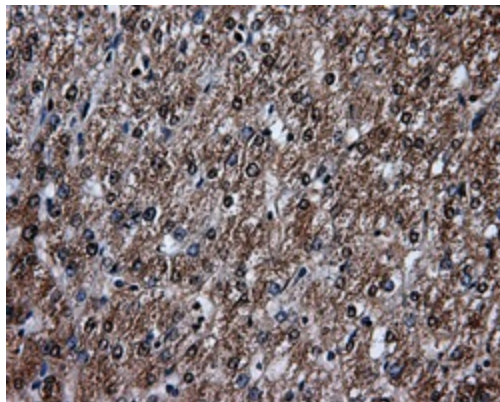
Western blot analysis of extracts (10ug) from 4 different cell lines by using anti-LTA4H monoclonal antibody (1:200).



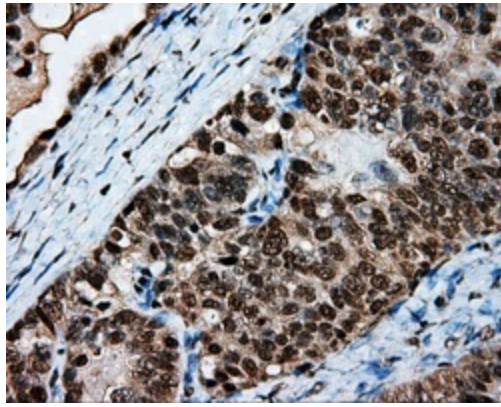
Equivalent amounts of cell lysates (10 ug per lane) of wild-type 293T cells (WT, Cat# LC810293T) and LTA4H-Knockout 293T cells (KO, Cat# [LC812368]) were separated by SDS-PAGE and immunoblotted with anti-LTA4H monoclonal antibody [TA500663], (1:500). Then the blotted membrane was stripped and reprobed with anti-HSP90AB1 antibody ([TA500494]) as a loading control.



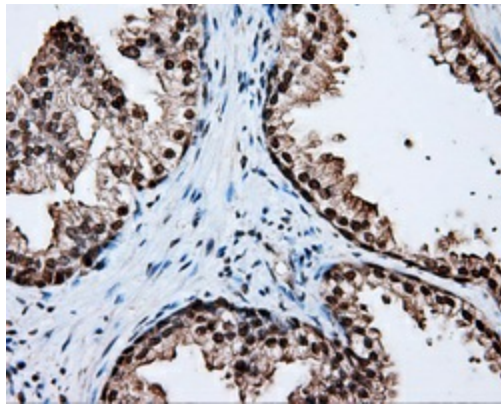
Immunohistochemical staining of paraffin-embedded Kidney tissue within the normal limits using anti-LTA4H mouse monoclonal antibody. (Heat-induced epitope retrieval by 10mM citric buffer, pH6.0, 100°C for 10min, [TA500663], Dilution 1:50)



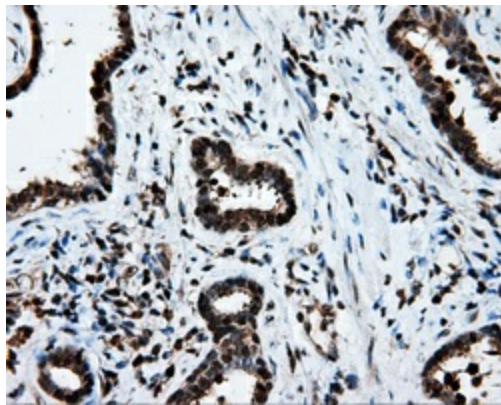
Immunohistochemical staining of paraffin-embedded liver tissue within the normal limits using anti-LTA4H mouse monoclonal antibody. (Heat-induced epitope retrieval by 10mM citric buffer, pH6.0, 100°C for 10min, [TA500663], Dilution 1:50)



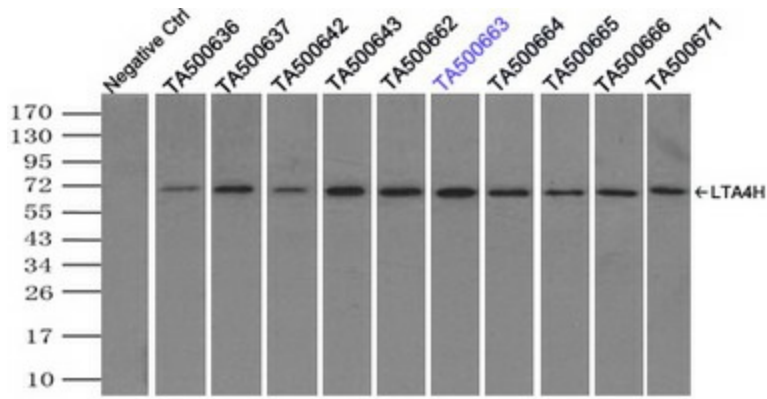
Immunohistochemical staining of paraffin-embedded Adenocarcinoma of ovary tissue using anti-LTA4H mouse monoclonal antibody. (Heat-induced epitope retrieval by 10mM citric buffer, pH6.0, 100°C for 10min, [TA500663], Dilution 1:50)



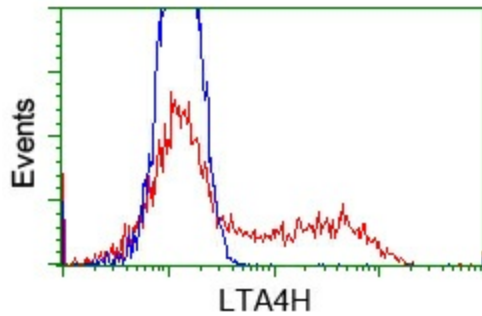
Immunohistochemical staining of paraffin-embedded prostate tissue within the normal limits using anti-LTA4H mouse monoclonal antibody. (Heat-induced epitope retrieval by 10mM citric buffer, pH6.0, 100°C for 10min, [TA500663], Dilution 1:50)



Immunohistochemical staining of paraffin-embedded Carcinoma of prostate tissue using anti-LTA4H mouse monoclonal antibody. (Heat-induced epitope retrieval by 10mM citric buffer, pH6.0, 100°C for 10min, [TA500663], Dilution 1:50)



Immunoprecipitation of LTA4H by using TrueMab monoclonal anti-LTA4H antibody (Negative control: IP without adding anti-LTA4H antibody). For each experiment, 500ul of DDK tagged LTA4H overexpression lysates (at 1:5 dilution with HEK293T lysate), 2ug of anti-LTA4H antibody and 20ul (0.1 mg) of goat anti-mouse conjugated magnetic beads were mixed and incubated overnight. After extensive wash to remove any non-specific binding, the immuno-precipitated products were analyzed with rabbit anti-DDK polyclonal antibody.



HEK293T cells transfected with either pCMV6-ENTRY LTA4H ([RC207617]) (Red) or empty vector control plasmid (Blue) were immunostained with anti-LTA4H mouse monoclonal ([TA500663]), and then analyzed by flow cytometry.