

## Product datasheet for **TA500652M**

### CD32A (FCGR2A) Mouse Monoclonal Antibody [Clone ID: OTI9G5]

#### Product data:

Product Type:	Primary Antibodies
Clone Name:	OTI9G5
Applications:	IF, IHC, IP, WB
Recommended Dilution:	WB 1:200 - 1:1000, IHC 1:50, IF 1:100, IP 2ug/500ul
Reactivity:	Human
Host:	Mouse
Isotype:	IgG1
Clonality:	Monoclonal
Immunogen:	Full length human recombinant protein of human FCGR2A (NP_067674) produced in HEK293T cell.
Formulation:	PBS (pH 7.3) containing 1% BSA, 50% glycerol and 0.02% sodium azide.
Concentration:	0.66 mg/ml
Purification:	Purified from mouse ascites fluids or tissue culture supernatant by affinity chromatography (protein A/G)
Conjugation:	Unconjugated
Storage:	Store at -20°C as received.
Stability:	Stable for 12 months from date of receipt.
Predicted Protein Size:	34.7 kDa
Gene Name:	Fc fragment of IgG receptor IIa
Database Link:	<a href="#">NP_067674</a> <a href="#">Entrez Gene 2212 Human</a> <a href="#">P12318</a>
Background:	This gene encodes one member of a family of immunoglobulin Fc receptor genes found on the surface of many immune response cells. The protein encoded by this gene is a cell surface receptor found on phagocytic cells such as macrophages and neutrophils, and is involved in the process of phagocytosis and clearing of immune complexes. Alternative splicing results in multiple transcript variants. [provided by RefSeq]

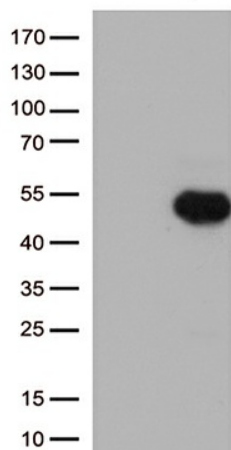

[View online »](#)

**Synonyms:** CD32; CD32A; CDw32; FCG2; FcGR; FCGR2; FCGR2A1; IGFR2

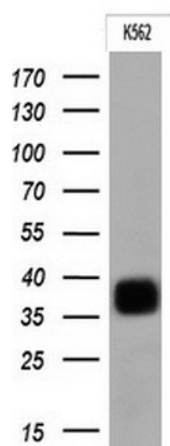
**Protein Families:** ES Cell Differentiation/IPS, Transmembrane

**Protein Pathways:** Fc gamma R-mediated phagocytosis, Systemic lupus erythematosus

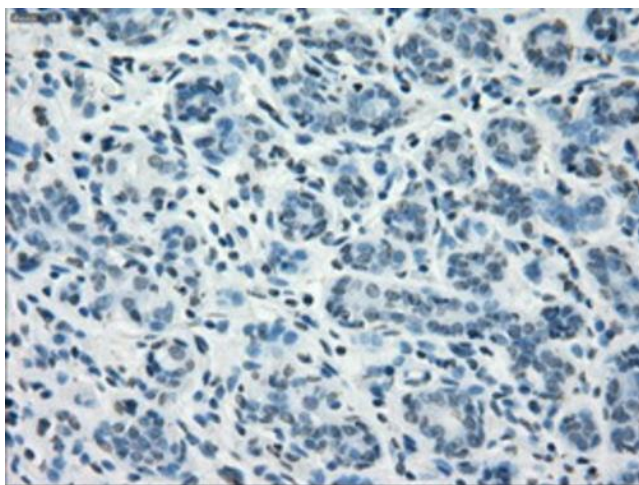
### Product images:



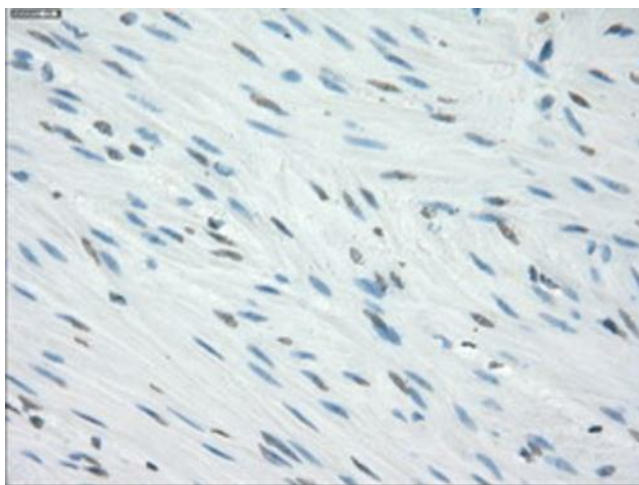
HEK293T cells were transfected with the pCMV6-ENTRY control (Cat# [PS100001], Left lane) or pCMV6-ENTRY FCGR2A (Cat# [RC227758], Right lane) cDNA for 48 hrs and lysed. Equivalent amounts of cell lysates (5 ug per lane) were separated by SDS-PAGE and immunoblotted with anti-FCGR2A (Cat# [TA500652])(1:500).



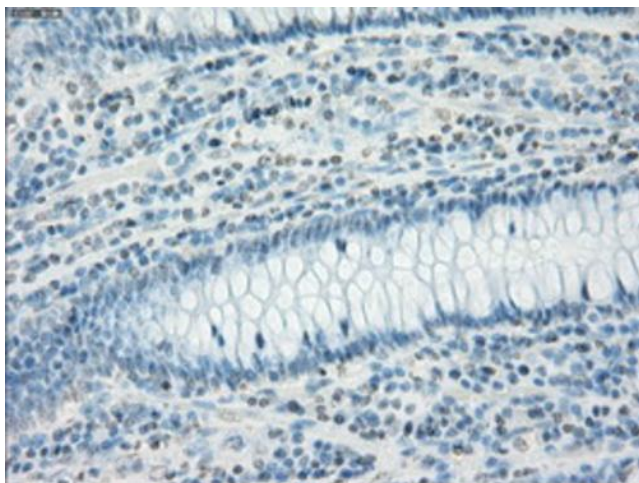
Western blot analysis of extracts (10ug) from 1 cell line by using anti-FCGR2A monoclonal antibody at 1:200.



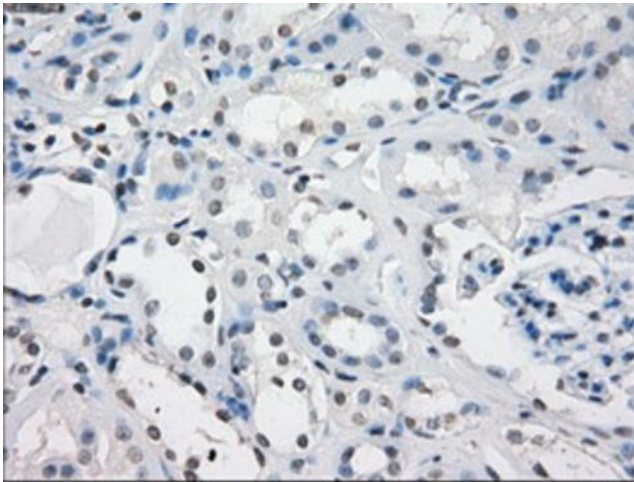
Immunohistochemical staining of paraffin-embedded Human breast tissue within the normal limits using anti-FCGR2A mouse monoclonal antibody. Heat-induced epitope retrieval by EDTA solution buffer pH 8.0 at 120°C for 3 min.



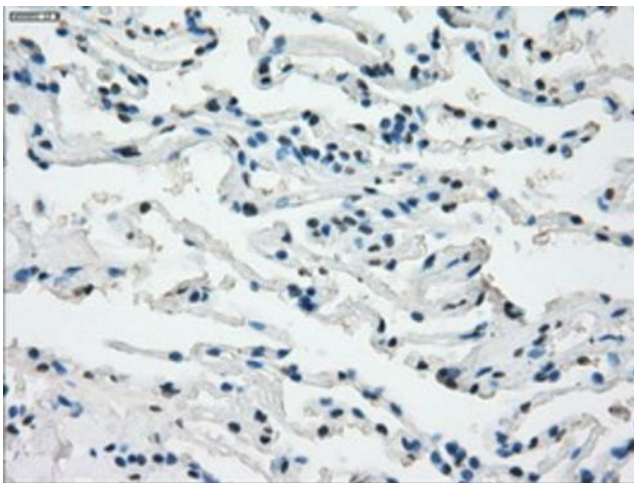
Immunohistochemical staining of paraffin-embedded Human colon tissue within the normal limits using anti-FCGR2A mouse monoclonal antibody. Heat-induced epitope retrieval by EDTA solution buffer pH 8.0 at 120°C for 3 min.



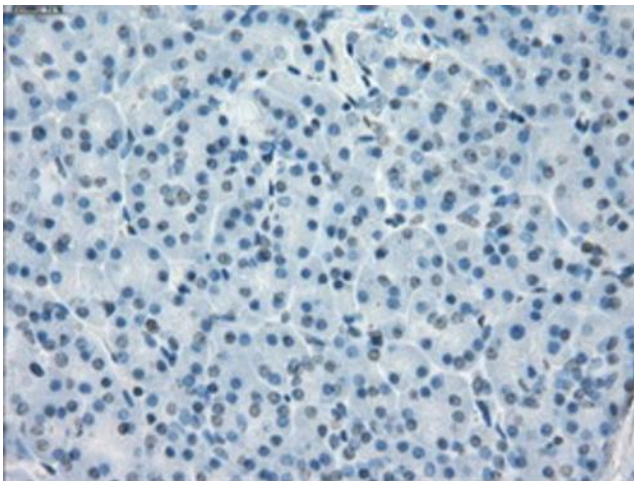
Immunohistochemical staining of paraffin-embedded Adenocarcinoma of Human colon tissue using anti-FCGR2A mouse monoclonal antibody. Heat-induced epitope retrieval by EDTA solution buffer pH 8.0 at 120°C for 3 min.



Immunohistochemical staining of paraffin-embedded Human Kidney tissue within the normal limits using anti-FCGR2A mouse monoclonal antibody. Heat-induced epitope retrieval by EDTA solution buffer pH 8.0 at 120°C for 3 min.

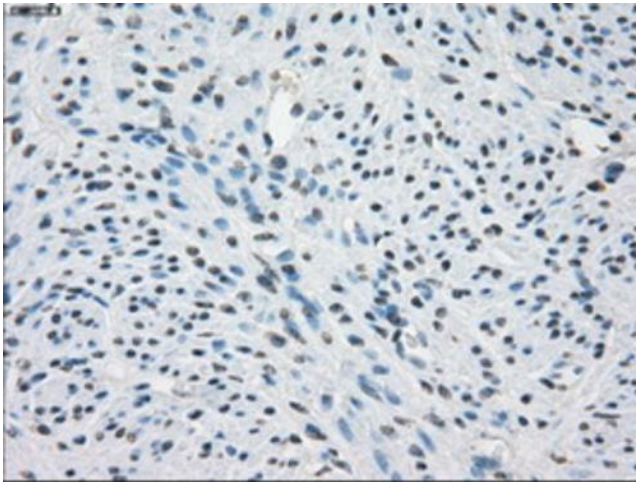


Immunohistochemical staining of paraffin-embedded Human lung tissue within the normal limits using anti-FCGR2A mouse monoclonal antibody. Heat-induced epitope retrieval by EDTA solution buffer pH 8.0 at 120°C for 3 min.

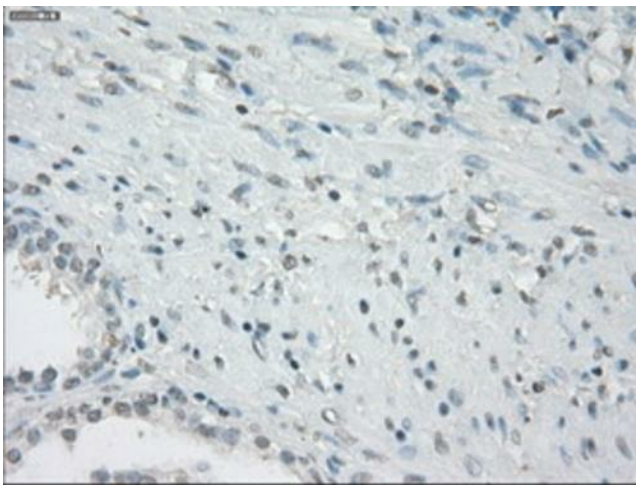


Immunohistochemical staining of paraffin-embedded Human pancreas tissue within the normal limits using anti-FCGR2A mouse monoclonal antibody. Heat-induced epitope retrieval by EDTA solution buffer pH 8.0 at 120°C for 3 min.

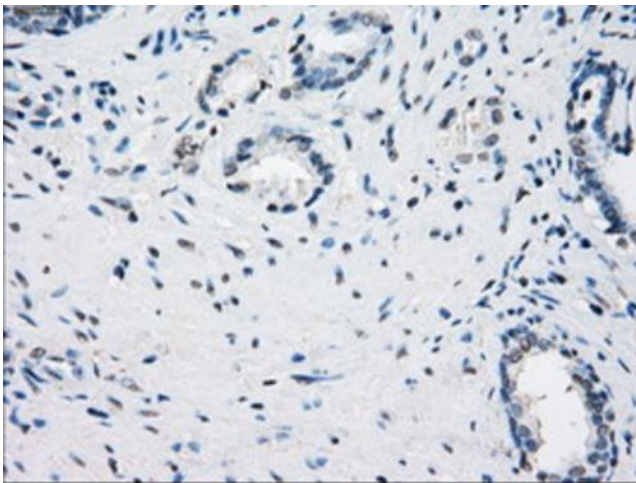




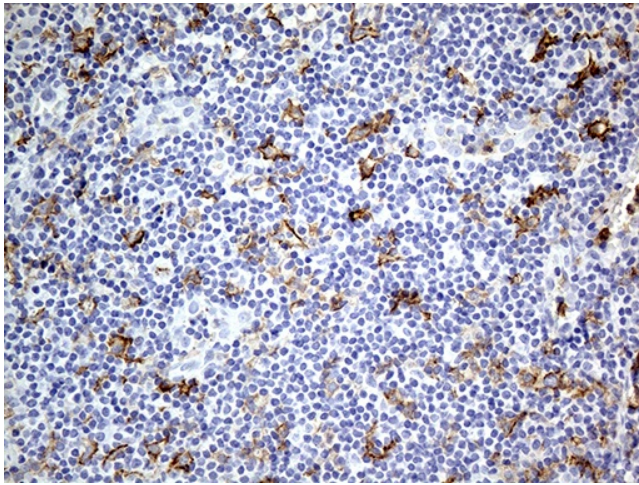
Immunohistochemical staining of paraffin-embedded Human endometrium tissue within the normal limits using anti-FCGR2A mouse monoclonal antibody. Heat-induced epitope retrieval by EDTA solution buffer pH 8.0 at 120°C for 3 min.



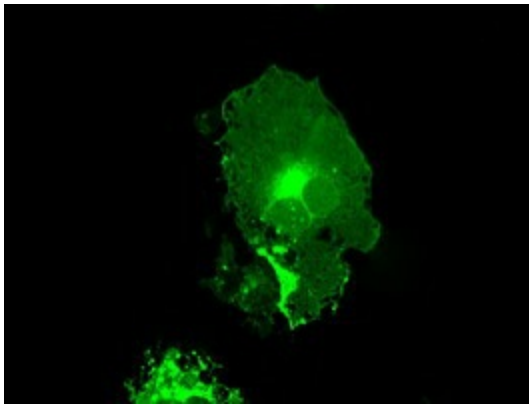
Immunohistochemical staining of paraffin-embedded Human prostate tissue within the normal limits using anti-FCGR2A mouse monoclonal antibody. Heat-induced epitope retrieval by EDTA solution buffer pH 8.0 at 120°C for 3 min.



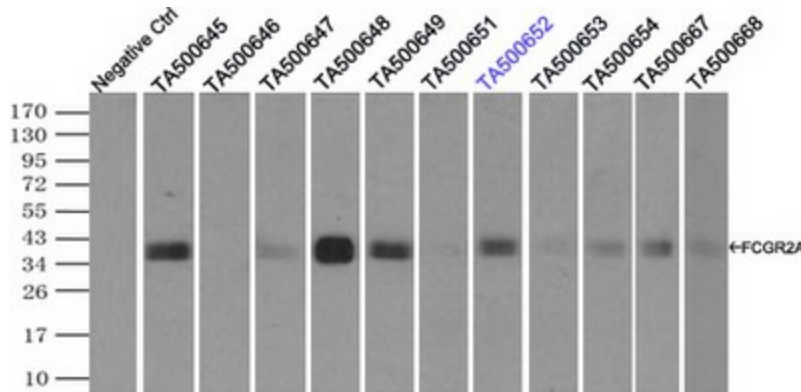
Immunohistochemical staining of paraffin-embedded Carcinoma of Human prostate tissue using anti-FCGR2A mouse monoclonal antibody. Heat-induced epitope retrieval by EDTA solution buffer pH 8.0 at 120°C for 3 min.



Immunohistochemical staining of paraffin-embedded Human tonsil within the normal limits using anti-FCGR2A mouse monoclonal antibody. Heat-induced epitope retrieval by EDTA solution buffer pH 8.0 at 120°C for 3 min.



Anti-FCGR2A mouse monoclonal antibody ([TA500652]) immunofluorescent staining of COS7 cells transiently transfected by pCMV6-ENTRY FCGR2A ([RC205786]).



Immunoprecipitation (IP) of FCGR2A by using TrueMab monoclonal anti-FCGR2A antibodies (Negative control: IP without adding anti-FCGR2A antibody.). For each experiment, 500ul of DDK tagged FCGR2A overexpression lysates (at 1:5 dilution with HEK293T lysate), 2ug of anti-FCGR2A antibody and 20ul (0.1mg) of goat anti-mouse conjugated magnetic beads were mixed and incubated overnight. After extensive wash to remove any non-specific binding, the immunoprecipitated products were analyzed with rabbit anti-DDK polyclonal antibody.