

Product datasheet for **TA500646S**

CD32A (FCGR2A) Mouse Monoclonal Antibody [Clone ID: OTI13G9]

Product data:

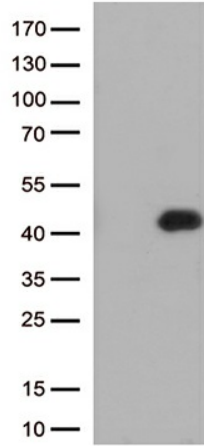
Product Type:	Primary Antibodies
Clone Name:	OTI13G9
Applications:	FC, IF, WB
Recommended Dilution:	WB 1:200 - 1:1000, IHC 1:50, IF 1:100, FLOW 1:100
Reactivity:	Human
Host:	Mouse
Isotype:	IgG1
Clonality:	Monoclonal
Immunogen:	Full length human recombinant protein of human FCGR2A (NP_067674) produced in HEK293T cell.
Formulation:	PBS (pH 7.3) containing 1% BSA, 50% glycerol and 0.02% sodium azide.
Concentration:	0.56 mg/ml
Purification:	Purified from mouse ascites fluids or tissue culture supernatant by affinity chromatography (protein A/G)
Conjugation:	Unconjugated
Storage:	Store at -20°C as received.
Stability:	Stable for 12 months from date of receipt.
Predicted Protein Size:	34.7 kDa
Gene Name:	Fc fragment of IgG receptor IIa
Database Link:	NP_067674 Entrez Gene 2212 Human P12318
Background:	This gene encodes one member of a family of immunoglobulin Fc receptor genes found on the surface of many immune response cells. The protein encoded by this gene is a cell surface receptor found on phagocytic cells such as macrophages and neutrophils, and is involved in the process of phagocytosis and clearing of immune complexes. Alternative splicing results in multiple transcript variants. [provided by RefSeq]



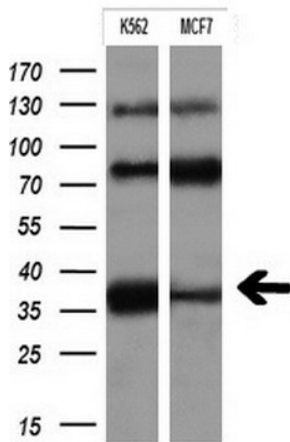
[View online »](#)

Synonyms: CD32; CD32A; CDw32; FCG2; FcGR; FCGR2; FCGR2A1; IGFR2
Protein Families: ES Cell Differentiation/IPS, Transmembrane
Protein Pathways: Fc gamma R-mediated phagocytosis, Systemic lupus erythematosus

Product images:



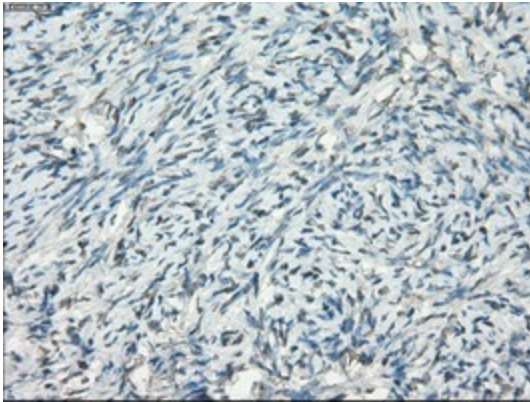
HEK293T cells were transfected with the pCMV6-ENTRY control (Left lane) or pCMV6-ENTRY FCGR2A ([RC227758], Right lane) cDNA for 48 hrs and lysed. Equivalent amounts of cell lysates (5 ug per lane) were separated by SDS-PAGE and immunoblotted with anti-FCGR2A (1:500).



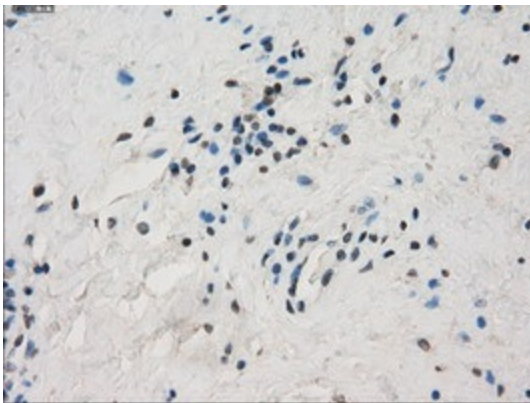
Western blot analysis of extracts (10ug) from 2 different cell lines by using anti-FCGR2A monoclonal antibody at 1:200.



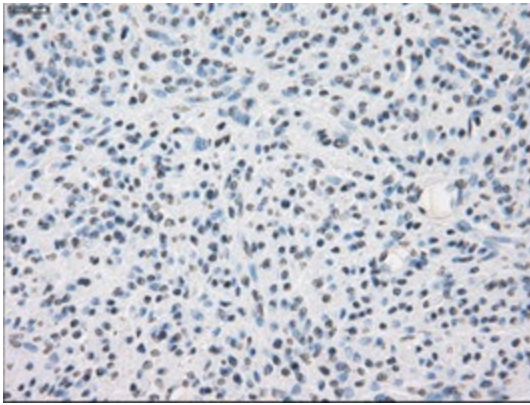
Immunohistochemical staining of paraffin-embedded Human colon tissue within the normal limits using anti-FCGR2A mouse monoclonal antibody. (Heat-induced epitope retrieval by 10mM citric buffer, pH6.0, 100°C for 10min, [TA500646])



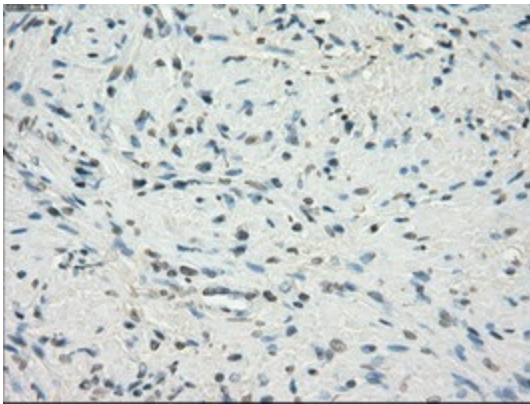
Immunohistochemical staining of paraffin-embedded Human Ovary tissue within the normal limits using anti-FCGR2A mouse monoclonal antibody. (Heat-induced epitope retrieval by 10mM citric buffer, pH6.0, 100°C for 10min, [TA500646])



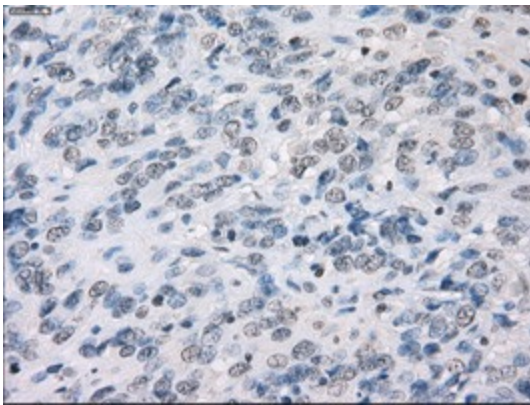
Immunohistochemical staining of paraffin-embedded Carcinoma of Human thyroid tissue using anti-FCGR2A mouse monoclonal antibody. (Heat-induced epitope retrieval by 10mM citric buffer, pH6.0, 100°C for 10min, [TA500646])



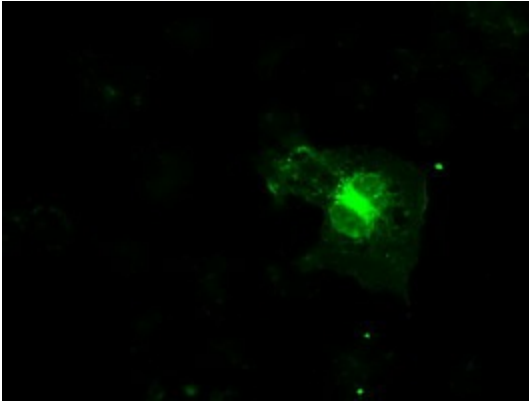
Immunohistochemical staining of paraffin-embedded Human endometrium tissue within the normal limits using anti-FCGR2A mouse monoclonal antibody. (Heat-induced epitope retrieval by 10mM citric buffer, pH6.0, 100°C for 10min, [TA500646])



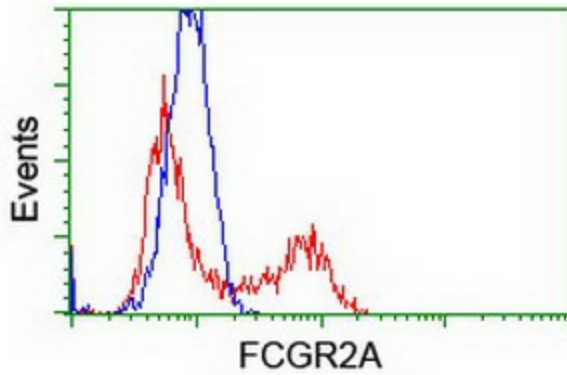
Immunohistochemical staining of paraffin-embedded Human prostate tissue within the normal limits using anti-FCGR2A mouse monoclonal antibody. (Heat-induced epitope retrieval by 10mM citric buffer, pH6.0, 100°C for 10min, [TA500646])



Immunohistochemical staining of paraffin-embedded Carcinoma of Human bladder tissue using anti-FCGR2A mouse monoclonal antibody. (Heat-induced epitope retrieval by 10mM citric buffer, pH6.0, 100°C for 10min, [TA500646])



Anti-FCGR2A mouse monoclonal antibody ([TA500646]) immunofluorescent staining of COS7 cells transiently transfected by pCMV6-ENTRY FCGR2A ([RC205786]).



HEK293T cells transfected with either [RC205786] overexpress plasmid (Red) or empty vector control plasmid (Blue) were immunostained by anti-FCGR2A antibody ([TA500646]), and then analyzed by flow cytometry.