

## Product datasheet for **TA500644**

### MEK1 (MAP2K1) Mouse Monoclonal Antibody [Clone ID: OTI1F5]

#### Product data:

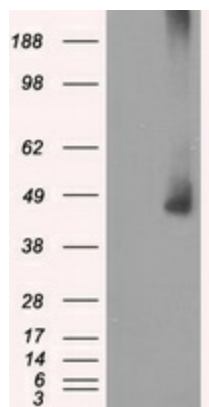
Product Type:	Primary Antibodies
Clone Name:	OTI1F5
Applications:	IF, WB
Recommended Dilution:	WB 1:2000, IF 1:100
Reactivity:	Human, Mouse, Rat
Host:	Mouse
Isotype:	IgG1
Clonality:	Monoclonal
Immunogen:	Full-length protein expressed in 293T cell transfected with human MAP2K1 expression vector
Formulation:	PBS (pH 7.3) containing 1% BSA, 50% glycerol and 0.02% sodium azide.
Concentration:	0.99 mg/ml
Purification:	Purified from mouse ascites fluids or tissue culture supernatant by affinity chromatography (protein A/G)
Conjugation:	Unconjugated
Storage:	Store at -20°C as received.
Stability:	Stable for 12 months from date of receipt.
Predicted Protein Size:	43.4 kDa
Gene Name:	mitogen-activated protein kinase kinase 1
Database Link:	<a href="#">NP_002746</a> <a href="#">Entrez Gene 26395 Mouse</a> <a href="#">Entrez Gene 170851 Rat</a> <a href="#">Entrez Gene 5604 Human</a> <a href="#">Q02750</a>



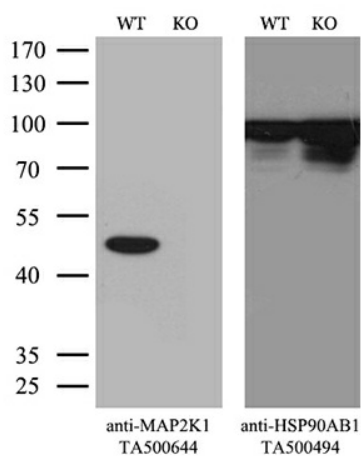
[View online »](#)

<b>Background:</b>	The protein encoded by this gene is a member of the dual specificity protein kinase family, which acts as a mitogen-activated protein (MAP) kinase kinase. MAP kinases, also known as extracellular signal-regulated kinases (ERKs), act as an integration point for multiple biochemical signals. This protein kinase lies upstream of MAP kinases and stimulates the enzymatic activity of MAP kinases upon wide variety of extra- and intracellular signals. As an essential component of MAP kinase signal transduction pathway, this kinase is involved in many cellular processes such as proliferation, differentiation, transcription regulation and development.
<b>Synonyms:</b>	CFC3; MAPKK1; MEK1; MKK1; PRKMK1
<b>Protein Families:</b>	Druggable Genome, Protein Kinase
<b>Protein Pathways:</b>	Acute myeloid leukemia, B cell receptor signaling pathway, Bladder cancer, Chemokine signaling pathway, Chronic myeloid leukemia, Colorectal cancer, Dorso-ventral axis formation, Endometrial cancer, ErbB signaling pathway, Fc epsilon RI signaling pathway, Fc gamma R-mediated phagocytosis, Focal adhesion, Gap junction, Glioma, GnRH signaling pathway, Insulin signaling pathway, Long-term depression, Long-term potentiation, MAPK signaling pathway, Melanogenesis, Melanoma, Natural killer cell mediated cytotoxicity, Neurotrophin signaling pathway, Non-small cell lung cancer, Oocyte meiosis, Pancreatic cancer, Pathways in cancer, Prion diseases, Progesterone-mediated oocyte maturation, Prostate cancer, Regulation of actin cytoskeleton, Renal cell carcinoma, T cell receptor signaling pathway, Thyroid cancer, Toll-like receptor signaling pathway, Vascular smooth muscle contraction, VEGF signaling pathway

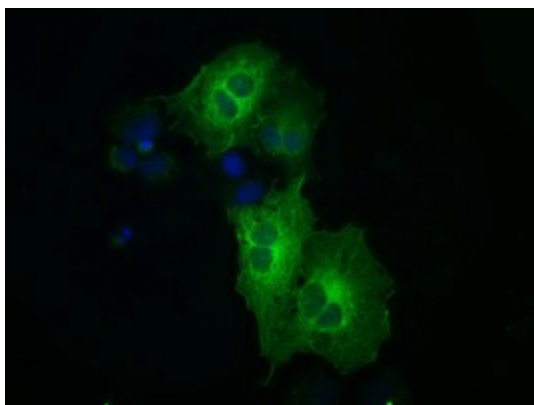
### Product images:



HEK293T cells were transfected with the pCMV6-ENTRY control (Left lane) or pCMV6-ENTRY MAP2K1 ([RC218460], Right lane) cDNA for 48 hrs and lysed. Equivalent amounts of cell lysates (5 ug per lane) were separated by SDS-PAGE and immunoblotted with anti-MAP2K1. Positive lysates [LY400974] (100ug) and [LC400974] (20ug) can be purchased separately from OriGene.



Equivalent amounts of cell lysates (10 ug per lane) of wild-type HeLa cells (WT, Cat# LC810HELA) and MAP2K1-Knockout HeLa cells (KO, Cat# [LC810188]) were separated by SDS-PAGE and immunoblotted with anti-MAP2K1 monoclonal antibody TA500644. Then the blotted membrane was stripped and reprobed with anti-HSP90AB1 antibody ([TA500494]) as a loading control (1:500).



Anti-MAP2K1 mouse monoclonal antibody (TA500644) immunofluorescent staining of COS7 cells transiently transfected by pCMV6-ENTRY MAP2K1 ([RC218460]).