

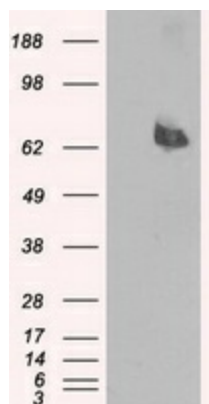
## Product datasheet for TA500642M

### Leukotriene A4 hydrolase (LTA4H) Mouse Monoclonal Antibody [Clone ID: OTI9G8]

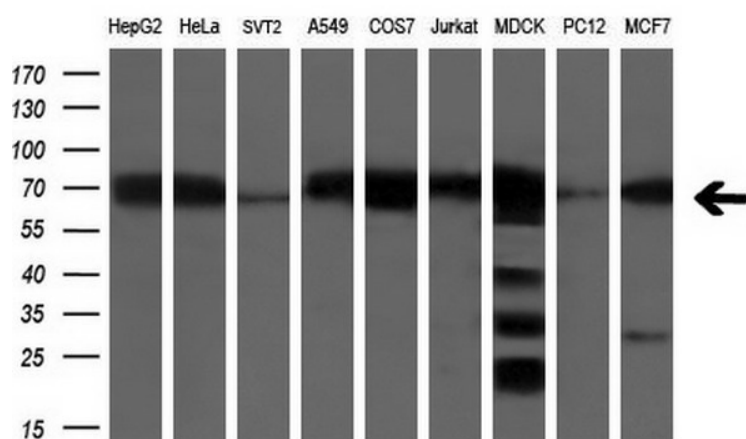
#### Product data:

|                         |  |
|-------------------------|--|
| Product Type:           | Primary Antibodies   |
| Clone Name:             | OTI9G8   |
| Applications:           | FC, IF, IHC, WB  |
| Recommended Dilution:   | IHC 1:100~200, WB: 1:200   |
| Reactivity:             | Human, Mouse, Rat  |
| Host:                   | Mouse  |
| Isotype:                | IgG2a  |
| Clonality:              | Monoclonal   |
| Immunogen:              | Full length human recombinant protein of human LTA4H (NP_000886) produced in HEK293T cell.   |
| Formulation:            | PBS (pH 7.3) containing 1% BSA, 50% glycerol and 0.02% sodium azide.   |
| Concentration:          | 0.91 mg/ml   |
| Purification:           | Purified from mouse ascites fluids or tissue culture supernatant by affinity chromatography (protein A/G)  |
| Conjugation:            | Unconjugated   |
| Storage:                | Store at -20°C as received.  |
| Stability:              | Stable for 12 months from date of receipt.   |
| Predicted Protein Size: | 69.3 kDa   |
| Gene Name:              | leukotriene A4 hydrolase   |
| Database Link:          | <a href="#">NP_000886</a><br><a href="#">Entrez Gene 16993 Mouse</a> <a href="#">Entrez Gene 299732 Rat</a> <a href="#">Entrez Gene 4048 Human</a><br><a href="#">P09960</a> |
| Background:             | Hydrolyzes an epoxide moiety of leukotriene A4 (LTA-4) to form leukotriene B4 (LTB-4). The enzyme also has some peptidase activity   |
| Synonyms:               | leukotriene A4 hydrolase   |
| Protein Families:       | Druggable Genome, Protease   |
| Protein Pathways:       | Arachidonic acid metabolism, Metabolic pathways  |

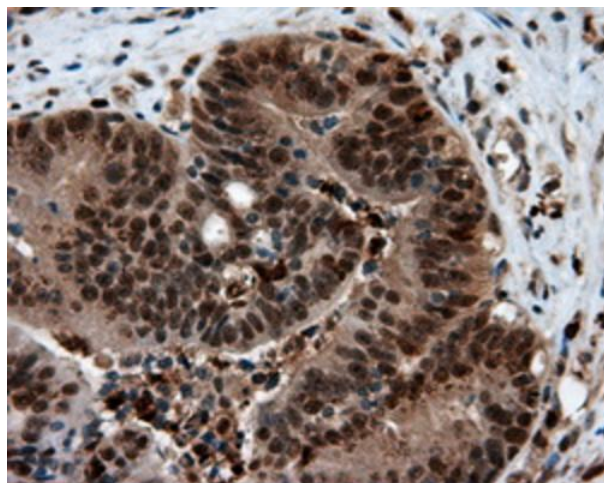

[View online »](#)

**Product images:**


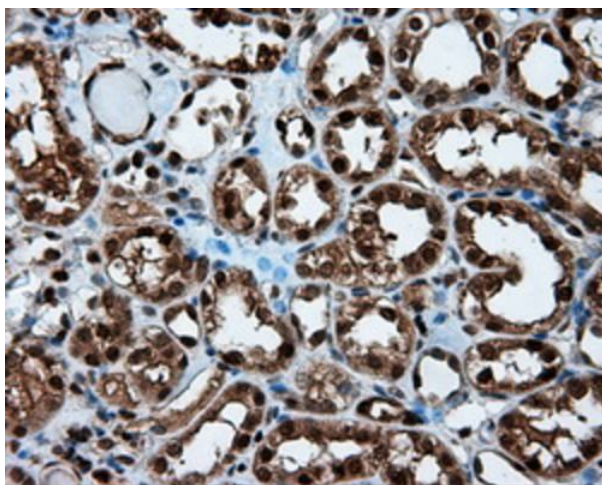
HEK293T cells were transfected with the pCMV6-ENTRY control (Left lane) or pCMV6-ENTRY LTA4H ([RC207617], Right lane) cDNA for 48 hrs and lysed. Equivalent amounts of cell lysates (5 ug per lane) were separated by SDS-PAGE and immunoblotted with anti-LTA4H. Positive lysates [LY424467] (100ug) and [LC424467] (20ug) can be purchased separately from OriGene.



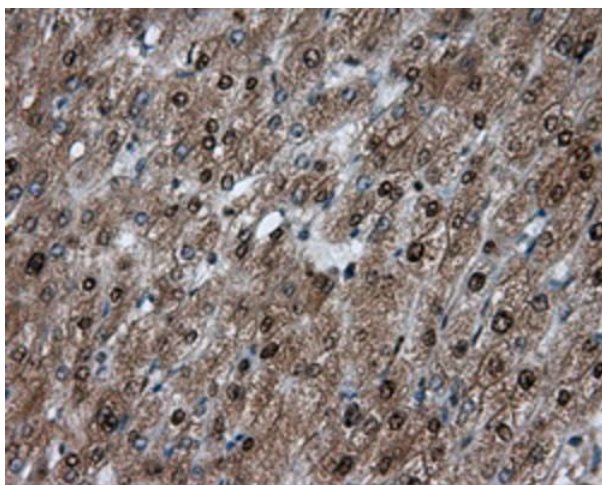
Western blot analysis of extracts (35ug) from 9 different cell lines by using anti-LTA4H monoclonal antibody (HepG2: human; HeLa: human; SVT2: mouse; A549: human; COS7: monkey; Jurkat: human; MDCK: canine; PC12: rat; MCF7: human) (1:200).



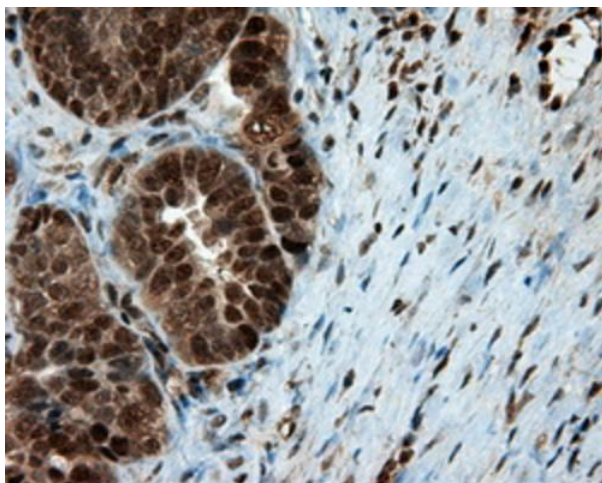
Immunohistochemical staining of paraffin-embedded Adenocarcinoma of colon tissue using anti-LTA4H mouse monoclonal antibody. Heat-induced epitope retrieval by EDTA solution buffer pH 8.0 at 120°C for 3 min.



Immunohistochemical staining of paraffin-embedded Kidney tissue within the normal limits using anti-LTA4H mouse monoclonal antibody. Heat-induced epitope retrieval by EDTA solution buffer pH 8.0 at 120°C for 3 min.

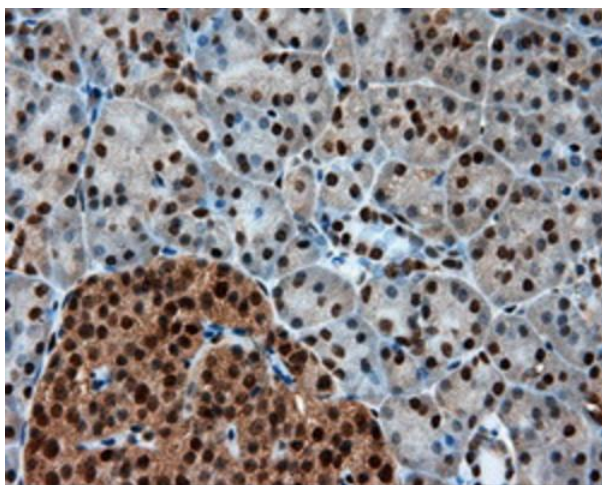


Immunohistochemical staining of paraffin-embedded liver tissue within the normal limits using anti-LTA4H mouse monoclonal antibody. Heat-induced epitope retrieval by EDTA solution buffer pH 8.0 at 120°C for 3 min.

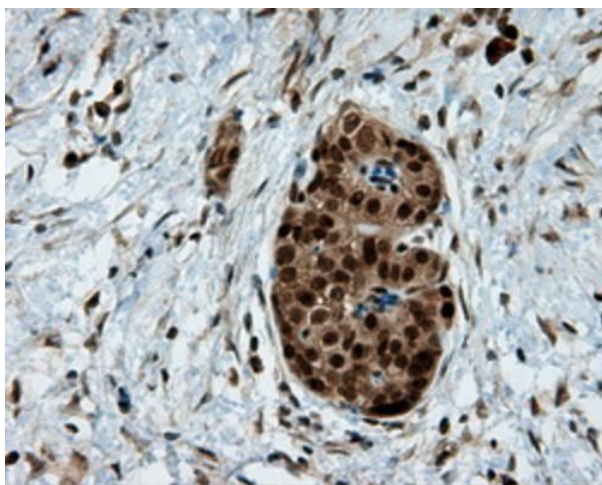


Immunohistochemical staining of paraffin-embedded Adenocarcinoma of ovary tissue using anti-LTA4H mouse monoclonal antibody. Heat-induced epitope retrieval by EDTA solution buffer pH 8.0 at 120°C for 3 min.

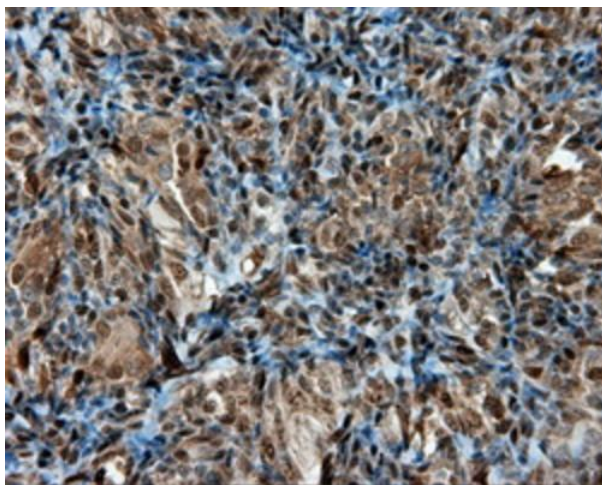




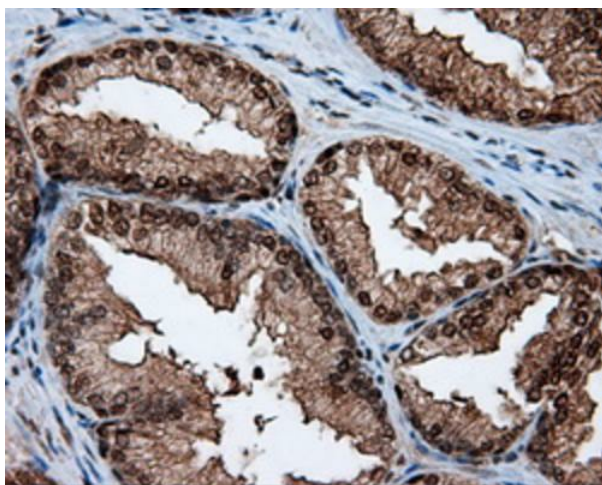
Immunohistochemical staining of paraffin-embedded pancreas tissue within the normal limits using anti-LTA4H mouse monoclonal antibody. Heat-induced epitope retrieval by EDTA solution buffer pH 8.0 at 120°C for 3 min.



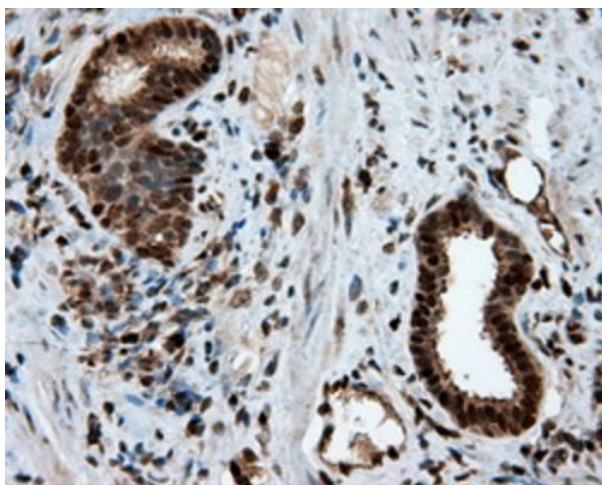
Immunohistochemical staining of paraffin-embedded Carcinoma of pancreas tissue using anti-LTA4H mouse monoclonal antibody. Heat-induced epitope retrieval by EDTA solution buffer pH 8.0 at 120°C for 3 min.



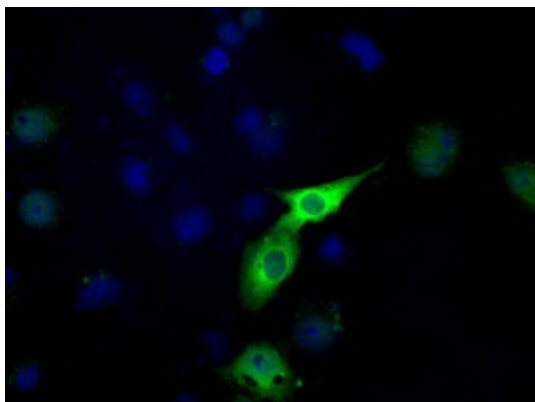
Immunohistochemical staining of paraffin-embedded Carcinoma of thyroid tissue using anti-LTA4H mouse monoclonal antibody. Heat-induced epitope retrieval by EDTA solution buffer pH 8.0 at 120°C for 3 min.



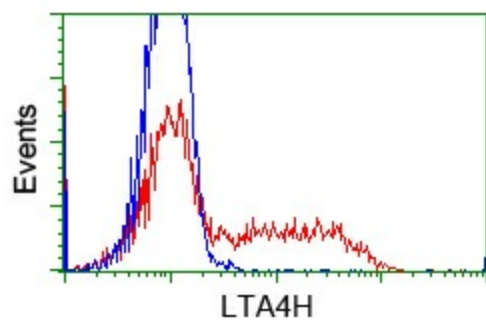
Immunohistochemical staining of paraffin-embedded prostate tissue within the normal limits using anti-LTA4H mouse monoclonal antibody. Heat-induced epitope retrieval by EDTA solution buffer pH 8.0 at 120°C for 3 min.



Immunohistochemical staining of paraffin-embedded Carcinoma of prostate tissue using anti-LTA4H mouse monoclonal antibody. Heat-induced epitope retrieval by EDTA solution buffer pH 8.0 at 120°C for 3 min.



Anti-LTA4H mouse monoclonal antibody (TA500642) immunofluorescent staining of COS7 cells transiently transfected by pCMV6-ENTRY LTA4H (RC207617).



HEK293T cells transfected with either pCMV6-ENTRY LTA4H ([RC207617]) (Red) or empty vector control plasmid (Blue) were immunostained with anti-LTA4H mouse monoclonal ([TA500642]), and then analyzed by flow cytometry.